

## UEA Student Facts and Figures 2020/21

Data extracted on:

11/01/2021

### Purpose

To present in cycle, interim, active student population demographic figures for the purpose of external queries.

### Data specification

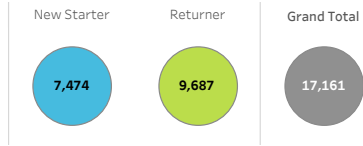
- Note that where headcounts and percentages have a base size of less than five students the count has been suppressed, therefore populations may not add up to the overall totals for data protection reasons.
- Data extract taken in December each year
- All figures are a headcount, or percentage thereof and include "Active" census reportable students only 'Current status'
- Students studying at the Research Institutes are included in the relevant department within the Faculty of Science.

### Contents

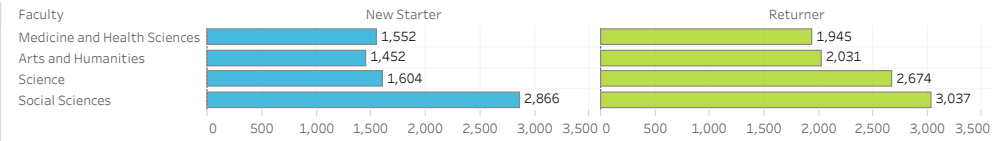
1. **Active student Population:** Headline institutional, faculty & departmental split
  - a) New starter/returner - All levels
  - b) New starter/returner – Postgraduate Research
  - c) New starter/returner – Postgraduate Taught
  - d) New starter/returner – First degree
  - e) New starter/returner - Other undergraduate
  - f) Total population – Mode of study (full time [FT]/ part time [PT])
  - g) New starter population – Mode of study
2. **Gender:** level of study, faculty & departmental split
  - a) Total population
  - b) New starter population
3. **Age band:** Mode of study, level of study – Institutional & faculty split
  - a) Total population
  - b) New starter population
4. **Fee:** Student fee paying type
  - a) Total population - Level of study, institutional & faculty split
  - b) Total population – faculty, departmental split
5. **Location:** UK postcode region & East of England
  - a) Postcode region - Total population: mode of study, level of study
  - b) East of England - Total population: mode of study
6. **International:** International Fee paying, Full time, level of study, faculty & departmental split
  - a) Total population
  - b) New starter population
  - c) Top 10 domiciles – level of study
7. **Snapshot:** Institutional, faculty & departmental split
  - a) Total population annual snapshot - level of study, institutional & faculty split
  - b) Total population annual snapshot - faculty, departmental split
  - c) Total population monthly snapshot - level of study, institutional
  - d) New starter population monthly snapshot - level of study, institutional
8. **Awards:** Institutional, faculty & department
  - a) Level of qualification
  - b) UG awards by classification



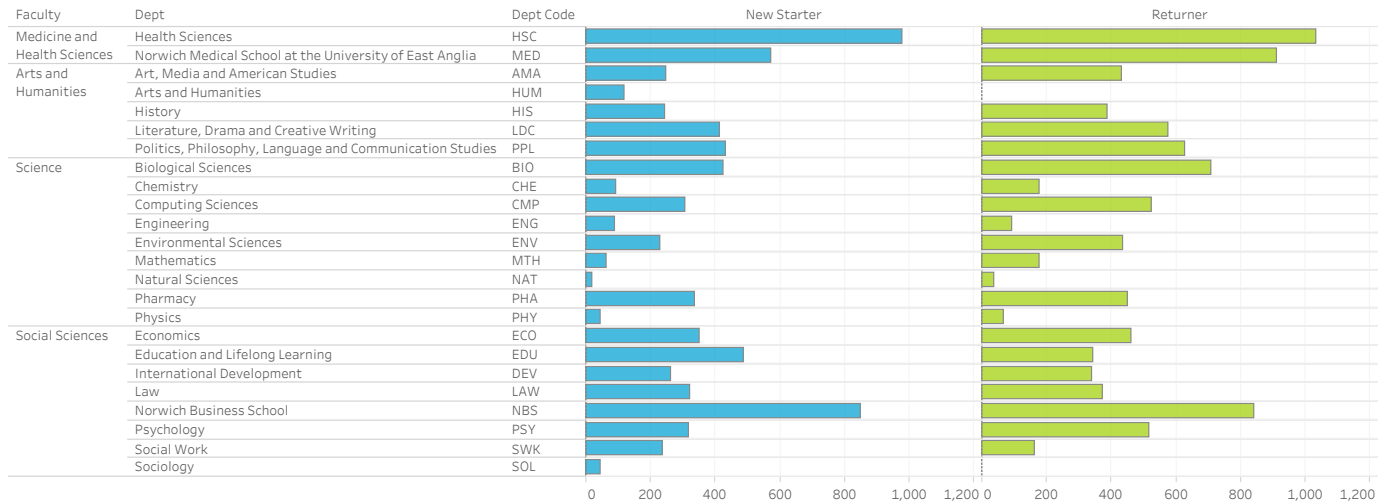
Institutional



Faculty, new starter and returner

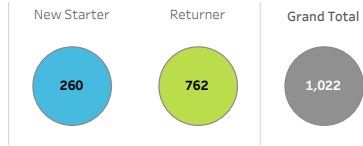


Faculty, department, new starter and returner

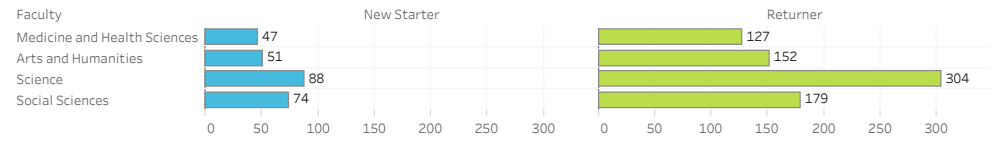


Note: Student populations of less than 5 are suppressed, therefore popl. may not add up to the overall totals for data protection reasons.

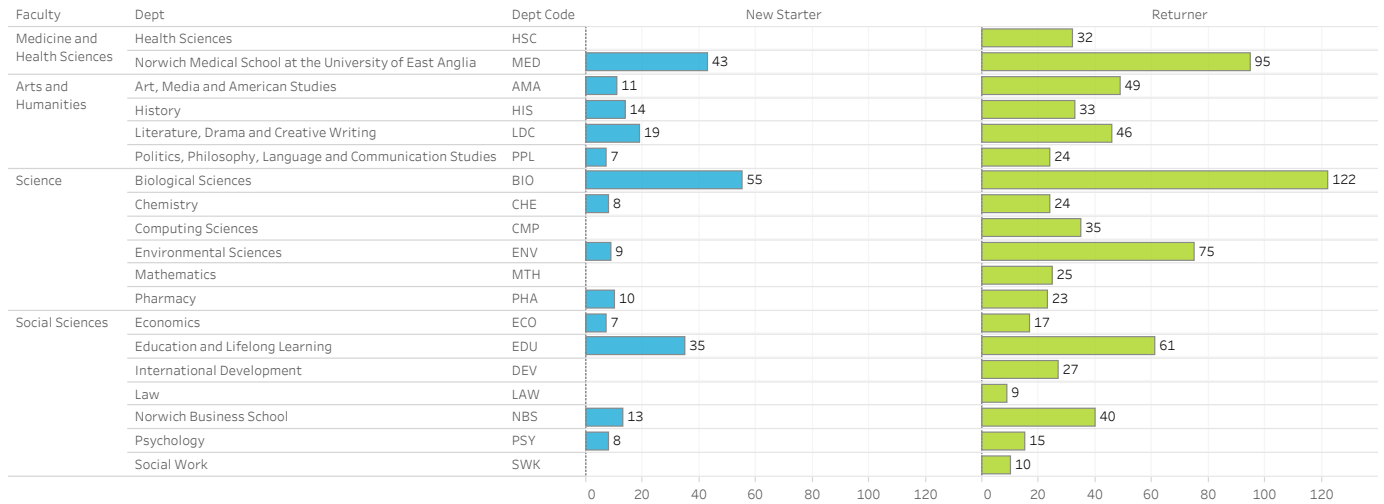
Institutional



Faculty, new starter and returner

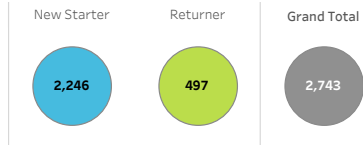


Faculty, department, new starter and returner

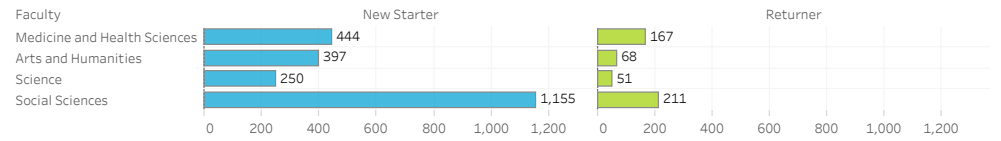


Note: Student populations of less than 5 are suppressed, therefore popl. may not add up to the overall totals for data protection reasons.

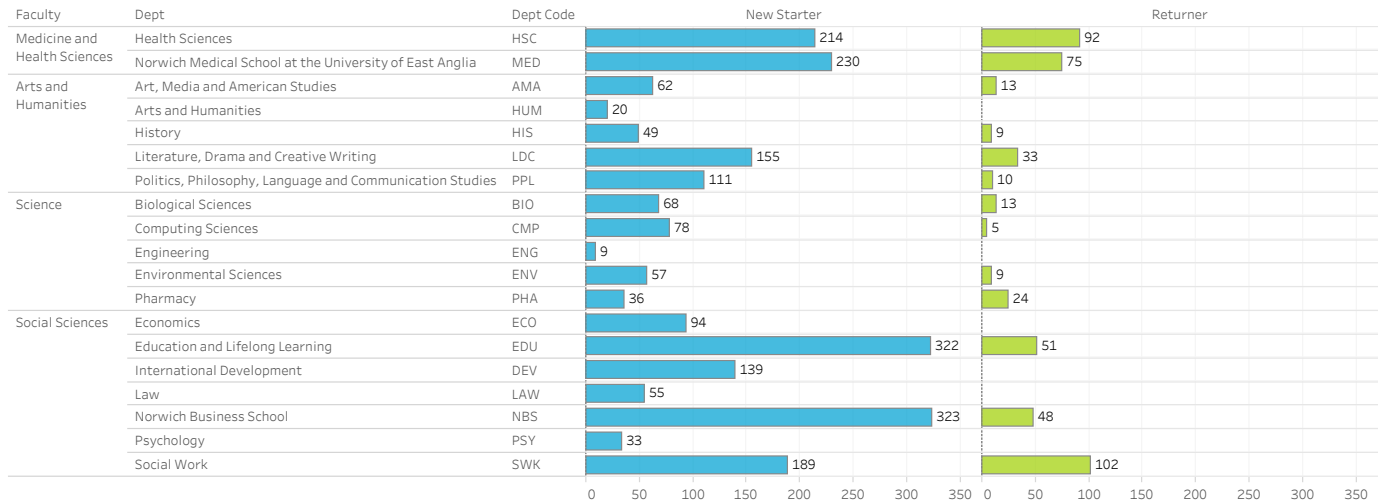
Institutional



Faculty, new starter and returner

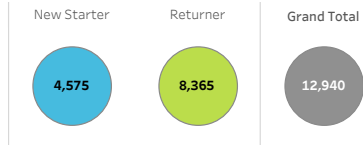


Faculty, department, new starter and returner

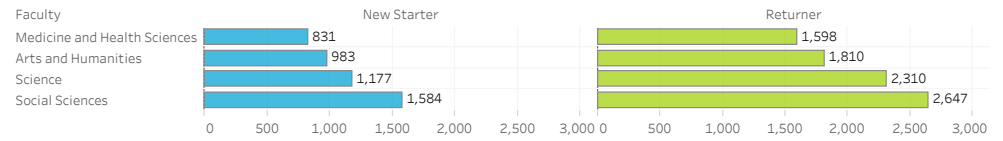


Note: Student populations of less than 5 are suppressed, therefore popl. may not add up to the overall totals for data protection reasons.

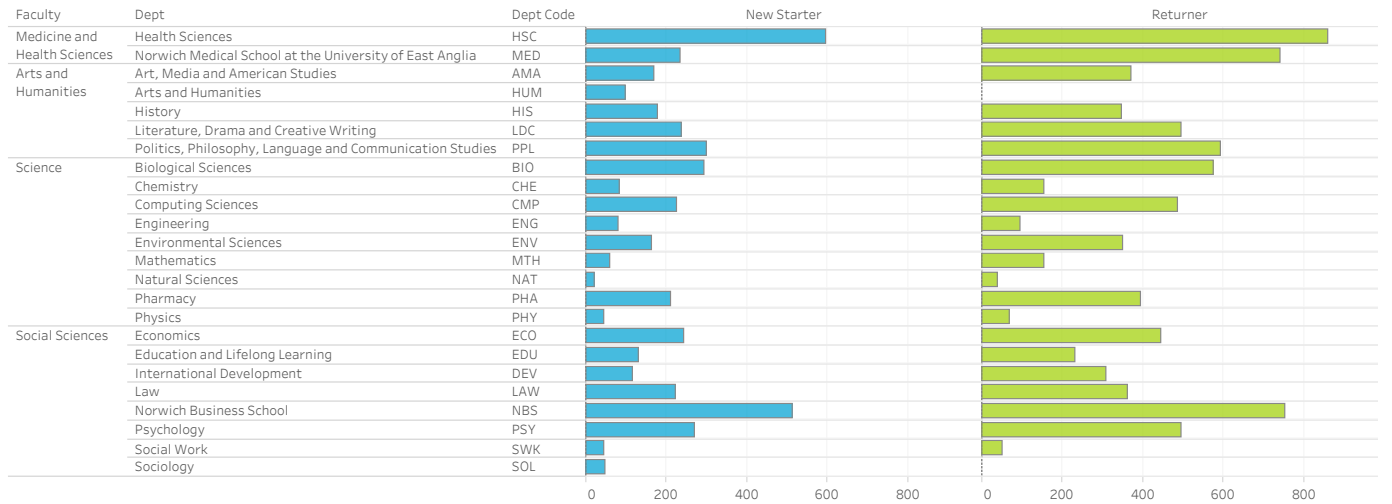
Institutional



Faculty, new starter and returner

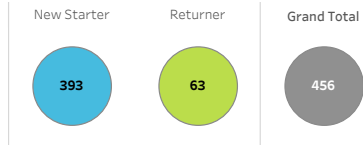


Faculty, department, new starter and returner

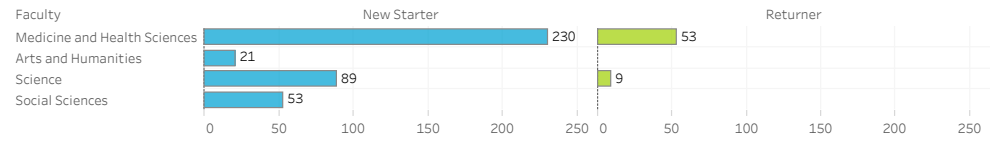


Note: Student populations of less than 5 are suppressed, therefore popl. may not add up to the overall totals for data protection reasons.

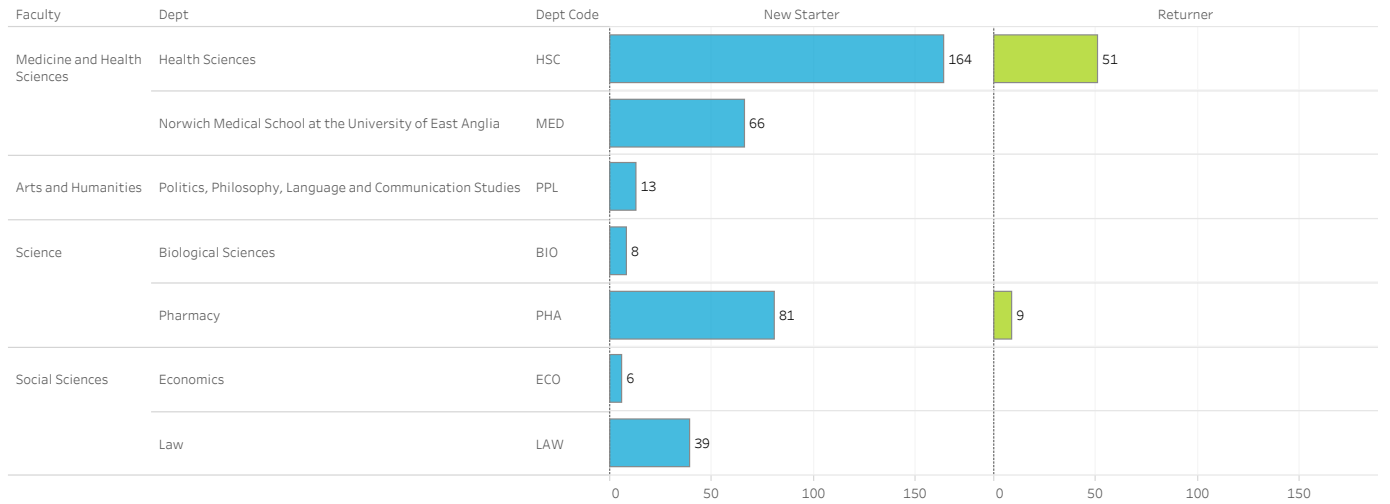
**Institutional**



**Faculty, new starter and returner**



**Faculty, department, new starter and returner**



**Note:** Student populations of less than 5 are suppressed, therefore popl. may not add up to the overall totals for data protection reasons.

## 1. Headcount of active student population:

New Starter  
Returner

### Headline institutional table. Level of study and mode of study

Intended Hesa Qualification Level 5 Way	FT	PT	Total
01 - Postgraduate (research)	857	165	1,022
02 - Postgraduate (taught)	1,681	1,062	2,743
03 - First degree	12,885	55	12,940
04 - Other undergraduate	157	299	456
<b>Grand Total</b>	<b>15,580</b>	<b>1,581</b>	<b>17,161</b>

### Headline Faculty table. Level of study and mode of study

Faculty	01 - Postgraduate (research)		02 - Postgraduate (taught)		03 - First degree		04 - Other undergraduate	
	FT	PT	FT	PT	FT	PT	FT	PT
Medicine and Health Sciences	151	23	203	408	2,383	46	74	209
Arts and Humanities	132	71	340	125	2,789		22	
Science	376	16	216	85	3,482			90
Social Sciences	198	55	922	444	4,231		53	

### Headline Faculty & department table. Level of study and mode of study

Faculty	Dept	Dept Code	01 - Postgraduate (research)		02 - Postgraduate (taught)		03 - First degree		04 - Other undergraduate	
			FT	PT	FT	PT	FT	PT	FT	PT
Medicine and Health Sciences	Health Sciences	HSC	15	21	10	296	1,409	46	72	143
	Norwich Medical School at the University of East Anglia	MED	136		193	112	974			66
Arts and Humanities	Art, Media and American Studies	AMA	36	24	64	11	539			
	Arts and Humanities	HUM			16	7	101			
	History	HIS	26	21	40	18	525			
	Literature, Drama and Creative Writing	LDC	50	15	111	77	731			
	Politics, Philosophy, Language and Communication Studies	PPL	20	11	109	12	893		13	
Science	Biological Sciences	BIO	176		71	10	864			
	Chemistry	CHE	31				237			
	Computing Sciences	CMP	33	5	73	10	711			
	Engineering	ENG			9		173			
	Environmental Sciences	ENV	80		55	11	513			
	Mathematics	MTH	26				211			
	Natural Sciences	NAT					58			
	Pharmacy	PHA	30		6	54	603			88
	Physics	PHY					112			
Social Sciences	Economics	ECO	24		92		688		6	
	Education and Lifelong Learning	EDU	57	39	287	86	362			
	International Development	DEV	28		135	8	426			
	Law	LAW	12		53		585		39	
	Norwich Business School	NBS	49		275	96	1,265			
	Psychology	PSY	19		32	5	767			
	Social Work	SWK	9		48	243	92			
	Sociology	SOL					46			

**Note:** Student populations of less than 5 are suppressed, therefore popl. may not add up to the overall totals for data protection reasons.

## 1. Headcount of active student population: New Starter

### Headline institutional table. Level of study and mode of study

Intended Hesa Qualification Level 5 Way	FT	PT	Total
01 - Postgraduate (research)	232	28	260
02 - Postgraduate (taught)	1,600	646	2,246
03 - First degree	4,558	17	4,575
04 - Other undergraduate	133	260	393
<b>Grand Total</b>	<b>6,523</b>	<b>951</b>	<b>7,474</b>

### Headline Faculty table. Level of study and mode of study

Faculty	01 - Postgraduate (research)		02 - Postgraduate (taught)		03 - First degree		04 - Other undergraduate	
	FT	PT	FT	PT	FT	PT	FT	PT
Medicine and Health Sciences	47		172	272	816	15	51	179
Arts and Humanities	41		330	67	982		21	
Science	87		203	47	1,176			81
Social Sciences	57	17	895	260	1,584		53	

### Headline Faculty & department table. Level of study and mode of study

Faculty	Dept	Dept Code	01 - Postgraduate (research)		02 - Postgraduate (taught)		03 - First degree		04 - Other undergraduate	
			FT	PT	FT	PT	FT	PT	FT	PT
Medicine and Health Sciences	Health Sciences	HSC			9	205	582	15	49	115
	Norwich Medical School at the University of East Anglia	MED	43		163	67	234			64
Arts and Humanities	Art, Media and American Studies	AMA	9		56	6	170			
	Arts and Humanities	HUM			16		97			
	History	HIS	10		40	9	179			
	Literature, Drama and Creative Writing	LDC	17		111	44	237			
	Politics, Philosophy, Language and Communication Studies	PPL	5		107		299		13	
Science	Biological Sciences	BIO	55		62	6	293			
	Chemistry	CHE	8				84			
	Computing Sciences	CMP			73	5	226			
	Engineering	ENG			9		79			
	Environmental Sciences	ENV	9		51	6	162			
	Mathematics	MTH					58			
	Natural Sciences	NAT					20			
	Pharmacy	PHA	10		6	30	209			79
Physics	PHY					45				
Social Sciences	Economics	ECO	7		92		243			6
	Education and Lifelong Learning	EDU	23	12	285	37	130			
	International Development	DEV			133	6	117			
	Law	LAW			53		222			39
	Norwich Business School	NBS	12		274	49	512			
	Psychology	PSY	6		32		271			
	Social Work	SWK			26	163	43			
Sociology	SOL					46				

**Note:** Student populations of less than 5 are suppressed, therefore popl. may not add up to the overall totals for data protection reasons.



## 2. Gender distribution - Headcount of active student population:

New Starter  
Returner

### Headline Institutional table. Level of study, all mode of study

Intended Hesa Qualification Level 5 Way	FEMALE		MALE	
01 - Postgraduate (research)	579	57%	436	43%
02 - Postgraduate (taught)	1,733	64%	993	36%
03 - First degree	7,190	56%	5,736	44%
04 - Other undergraduate	346	76%	107	24%
<b>Grand Total</b>	<b>9,848</b>	<b>58%</b>	<b>7,272</b>	<b>42%</b>

### Headline Faculty table. Level of study, all mode of study

Faculty	01 - Postgraduate (research)		02 - Postgraduate (taught)		03 - First degree		04 - Other undergraduate									
	FEMALE	MALE	FEMALE	MALE	FEMALE	MALE	FEMALE	MALE								
Medicine and Health Sciences	70%	30%	121	51	71%	29%	430	179	77%	23%	1,873	556	81%	19%	227	54
Arts and Humanities	52%	48%	104	97	62%	38%	283	173	59%	41%	1,632	1,152	57%	43%	12	9
Science	52%	48%	202	188	53%	47%	157	141	41%	59%	1,440	2,043	76%	24%	74	24
Social Sciences	60%	40%	152	100	63%	37%	863	500	53%	47%	2,245	1,985	62%	38%	33	20
<b>Grand Total</b>	<b>57%</b>	<b>43%</b>	<b>579</b>	<b>436</b>	<b>64%</b>	<b>36%</b>	<b>1,733</b>	<b>993</b>	<b>56%</b>	<b>44%</b>	<b>7,190</b>	<b>5,736</b>	<b>76%</b>	<b>24%</b>	<b>346</b>	<b>107</b>

### Headline Faculty & department table. Level of study, all mode of study

Faculty	Dept Code	01 - Postgraduate (research)		02 - Postgraduate (taught)		03 - First degree		04 - Other undergraduate									
		FEMALE	MALE	FEMALE	MALE	FEMALE	MALE	FEMALE	MALE								
Medicine and Health Sciences	HSC	75%	25%	27	9	76%	24%	233	72	86%	14%	1,258	197	80%	20%	172	42
	MED	69%	31%	94	42	65%	35%	197	107	63%	37%	615	359	82%	18%	55	12
Arts and Humanities	AMA	60%	40%	35	23	67%	33%	49	24	67%	33%	359	180	50%	50%		
	HIS	40%	60%	19	28	34%	66%	20	38	45%	55%	238	287				
	HUM					77%	23%	17	5	46%	54%	46	55				
	LDC	58%	42%	38	27	72%	28%	132	51	73%	27%	534	193	33%	67%		
Science	PPL	39%	61%	12	19	54%	46%	65	55	51%	49%	455	437	67%	33%	8	
	BIO	56%	44%	99	77	63%	38%	50	30	57%	43%	496	371	50%	50%		
	CHE	50%	50%	16	16	50%	50%			37%	63%	87	150				
	CMP	32%	68%	12	26	27%	73%	22	60	15%	85%	104	607				
	ENG					22%	78%		7	13%	87%	23	150				
	ENV	60%	40%	50	34	58%	42%	38	27	50%	50%	254	258				
	MTH	22%	78%	6	21					31%	69%	66	144				
	NAT									55%	45%	32	26				
Social Sciences	PHA	58%	42%	19	14	73%	27%	44	16	59%	41%	357	246	78%	22%	70	20
	PHY									19%	81%	21	91				
	DEV	68%	32%	21	10	70%	30%	100	43	67%	33%	284	142	50%	50%		
	ECO	42%	58%	10	14	26%	74%	24	70	24%	76%	167	521	67%	33%		
	EDU	71%	29%	67	28	67%	33%	251	122	64%	36%	233	129				
	LAW	46%	54%	6	7	56%	44%	32	25	64%	36%	377	208	62%	38%	24	15
	NBS	38%	62%	20	33	47%	53%	175	195	36%	64%	451	814	50%	50%		
PSY	78%	22%	18	5	65%	35%	24	13	80%	20%	612	154	75%	25%			
SOL									80%	20%	37	9					
SWK	77%	23%	10		89%	11%	257	32	91%	9%	84	8					
<b>Grand Total</b>			<b>579</b>	<b>436</b>	<b>64%</b>	<b>36%</b>	<b>1,733</b>	<b>993</b>	<b>56%</b>	<b>44%</b>	<b>7,190</b>	<b>5,736</b>	<b>76%</b>	<b>24%</b>	<b>346</b>	<b>107</b>	

**Note:** Student populations of less than 5 are suppressed, therefore popl. may not add up to the overall totals for data protection reasons.

## 2. Gender distribution - Headcount of active student population:

New Starter

### Headline Institutional table. Level of study, all mode of study

Intended Hesa Qualification Level 5 Way	FEMALE		MALE	
01 - Postgraduate (research)	146	57%	110	43%
02 - Postgraduate (taught)	1,392	62%	841	38%
03 - First degree	2,475	54%	2,098	46%
04 - Other undergraduate	296	76%	94	24%
<b>Grand Total</b>	<b>4,309</b>	<b>58%</b>	<b>3,143</b>	<b>42%</b>

### Headline Faculty table. Level of study, all mode of study

Faculty	01 - Postgraduate (research)		02 - Postgraduate (taught)		03 - First degree		04 - Other undergraduate									
	FEMALE	MALE	FEMALE	MALE	FEMALE	MALE	FEMALE	MALE								
Medicine and Health Sciences	73%	27%	33	12	72%	28%	319	123	78%	22%	649	182	80%	20%	183	45
Arts and Humanities	34%	66%	17	33	61%	39%	238	151	56%	44%	545	436	60%	40%	12	8
Science	59%	41%	51	36	50%	50%	125	124	40%	60%	468	709	76%	24%	68	21
Social Sciences	61%	39%	45	29	62%	38%	710	443	51%	49%	813	771	62%	38%	33	20
<b>Grand Total</b>	<b>57%</b>	<b>43%</b>	<b>146</b>	<b>110</b>	<b>62%</b>	<b>38%</b>	<b>1,392</b>	<b>841</b>	<b>54%</b>	<b>46%</b>	<b>2,475</b>	<b>2,098</b>	<b>76%</b>	<b>24%</b>	<b>296</b>	<b>94</b>

### Headline Faculty & department table. Level of study, all mode of study

Faculty	Dept Code	01 - Postgraduate (research)		02 - Postgraduate (taught)		03 - First degree		04 - Other undergraduate										
		FEMALE	MALE	FEMALE	MALE	FEMALE	MALE	FEMALE	MALE									
Medicine and Health Sciences	HSC	75%	25%			79%	21%	169	44	84%	16%	501	96	80%	20%	130	33	
	MED	73%	27%	30	11	66%	34%	150	79	63%	37%	148	86	82%	18%	53	12	
Arts and Humanities	AMA	30%	70%		7	69%	31%	42	19	65%	35%	110	59	50%	50%			
	HIS	29%	71%		10	37%	63%	18	31	42%	58%	75	104					
	HUM					74%	26%	14	5	47%	53%	46	51					
	LDC	47%	53%	9	10	69%	31%	104	46	73%	27%	174	63	50%	50%			
	PPL	14%	86%		6	55%	45%	60	50	47%	53%	140	159	67%	33%	8		
Science	BIO	60%	40%	33	22	60%	40%	41	27	58%	42%	169	124	50%	50%			
	CHE	50%	50%			50%	50%			38%	62%	32	52					
	CMP	33%	67%			28%	72%	22	56	12%	88%	28	198					
	ENG					22%	78%		7	11%	89%	9	70					
	ENV	67%	33%	6		59%	41%	33	23	47%	53%	76	87					
	MTH		100%							28%	72%	16	42					
	NAT									55%	45%	11	9					
	PHA	70%	30%	7		72%	28%	26	10	57%	43%	120	89	79%	21%	64	17	
Social Sciences	PHY									16%	84%	7	38					
	DEV	25%	75%			69%	31%	96	43	59%	41%	69	48	50%	50%			
	ECO	14%	86%		6	26%	74%	24	70	21%	79%	51	192	67%	33%			
	EDU	74%	26%	26	9	70%	30%	224	98	60%	40%	78	52					
	LAW	75%	25%			55%	45%	30	25	63%	37%	140	82	62%	38%	24	15	
	NBS	31%	69%		9	47%	53%	150	172	36%	64%	184	328	50%	50%			
	PSY	88%	13%	7		61%	39%	20	13	79%	21%	214	57	75%	25%			
SOL									80%	20%	37	9						
SWK	100%				88%	12%	166	22	93%	7%	40							
<b>Grand Total</b>			<b>57%</b>	<b>43%</b>	<b>146</b>	<b>110</b>	<b>62%</b>	<b>38%</b>	<b>1,392</b>	<b>841</b>	<b>54%</b>	<b>46%</b>	<b>2,475</b>	<b>2,098</b>	<b>76%</b>	<b>24%</b>	<b>296</b>	<b>94</b>

**Note:** Student populations of less than 5 are suppressed, therefore popl. may not add up to the overall totals for data protection reasons.

### 3. Age band of active student population

New Starter  
Returner

#### Headline Institutional table. Mode of study

Age Band At Entry	FT		PT	
16-20	11,382	73%	19	1%
21-24	2,405	15%	156	10%
25-34	1,315	8%	621	39%
35-44	327	2%	449	28%
45-54	106	1%	238	15%
55-64	41	0%	82	5%
65+		0%	16	1%

#### Headline Level of study. Mode of study

Age Band At Entry	01 - Postgraduate (research)		02 - Postgraduate (taught)				03 - First degree				04 - Other undergraduate					
	FT		PT		FT		PT		FT		PT		FT		PT	
16-20	0%				5	0%			11,339	88%			36	23%	19	6%
21-24	313	37%	12	7%	1,088	65%	98	9%	942	7%	5%		62	39%	43	14%
25-34	417	49%	47	28%	438	26%	422	40%	425	3%	30	55%	35	22%	122	41%
35-44	88	10%	55	33%	102	6%	321	30%	118	1%	12	22%	19	12%	61	20%
45-54	22	3%	24	15%	35	2%	162	15%	45	0%	8	15%	3%		44	15%
55-64	12	1%	21	13%	13	1%	49	5%	15	0%	4%		1%		10	3%
65+	0%		6		4%		10		1%		0%					

#### Headline Faculty table. Level of study, mode of study

Faculty	Age Band..	01 - Postgraduate (research)		02 - Postgraduate (taught)				03 - First degree				04 - Other undergraduate						
		FT		PT		FT		PT		FT		PT		FT		PT		
Medicine and Health Sciences	16-20							1,808	76%			8	11%	8	4%			
	21-24	41	27%			99	49%	15	4%	288	12%	4%		14	19%	22	11%	
	25-34	96	64%	6	26%	75	37%	204	50%	202	8%	27	59%	32	43%	91	44%	
	35-44	13	9%	10	43%	19	9%	122	30%	68	3%	11	24%	17	23%	49	23%	
	45-54			17%		8	4%	60	15%	16	1%	6	13%	4%		31	15%	
	55-64	1%		13%		1%		7	2%	0%						8	4%	
Arts and Humanities	16-20							2,503	90%			13	59%					
	21-24	28	21%	8	11%	239	70%	25	20%	180	6%			8	36%			
	25-34	66	50%	25	35%	67	20%	31	25%	66	2%							
	35-44	20	15%	15	21%	19	6%	16	13%	13	0%							
	45-54	9	7%	9	13%	7	2%	25	20%	18	1%	50%						
	55-64	7	5%	9	13%	8	2%	19	15%	8	0%	50%		5%				
	65+	2%		5		7%		9		7%		0%						
Science	16-20	1%						3,148	90%			38%		11	12%			
	21-24	204	54%	13%		148	69%	21	25%	218	6%	20%		50%		21	23%	
	25-34	148	39%	25%		56	26%	38	45%	87	2%	60%		13%		31	34%	
	35-44	21	6%	7	44%	9	4%	14	16%	22	1%	20%				12	13%	
	45-54	0%		6%		1%		8	9%	0%						13	14%	
	55-64			13%		0%		5%		0%						2%		
Social Sciences	16-20			5				1%	3,880	92%			12	23%				
	21-24	40	20%	4%		602	65%	37	8%	256	6%			36	68%			
	25-34	107	54%	12		22%	240	26%	149	34%	70	2%			4%			
	35-44	34	17%	23	42%	55	6%	169	38%	15	0%			4%				
	45-54	12	6%	10	18%	18	2%	69	16%	7	0%			2%				
	55-64	2%		7		13%		0%		19	4%	0%						
	65+	1%		2%				0%										

**Note:** Student populations of less than 5 are suppressed, therefore popl. may not add up to the overall totals for data protection reasons.

### 3. Age band of active student population New Starter

#### Headline Institutional table. Mode of study

Age Band At Entry	FT		PT	
16-20	3,945	60%	18	2%
21-24	1,583	24%	100	11%
25-34	723	11%	383	40%
35-44	187	3%	257	27%
45-54	56	1%	144	15%
55-64	28	0%	43	5%
65+		0%	6	1%

#### Headline Level of study. Mode of study

Age Band At Entry	01 - Postgraduate (research)		02 - Postgraduate (taught)		03 - First degree		04 - Other undergraduate									
	FT	PT	FT	PT	FT	PT	FT	PT								
16-20			5	0%		3,910	86%	30	23%	18	7%					
21-24	81	35%	11%	1,052	66%	58	9%	392	9%	58	44%	39	15%			
25-34	115	50%	8	29%	408	26%	260	40%	175	4%	12	71%	25	19%	103	40%
35-44	24	10%	6	21%	91	6%	193	30%	57	1%	24%	15	11%	54	21%	
45-54	7	3%	6	21%	31	2%	101	16%	14	0%	6%		3%	36	14%	
55-64		2%	14%	13	1%	29	4%	10	0%			1%	10	4%		
65+		0%	4%			5	1%									

#### Headline Faculty table. Level of study, mode of study

Faculty	Age Band ..	01 - Postgraduate (research)		02 - Postgraduate (taught)		03 - First degree		04 - Other undergraduate								
		FT	PT	FT	PT	FT	PT	FT	PT							
Medicine and Health Sciences	16-20					572	70%		6%	7	4%					
	21-24	11	23%		81	47%	13	5%	122	15%	10	20%	18	10%		
	25-34	33	70%		64	37%	137	50%	85	10%	11	73%	22	43%	77	43%
	35-44		6%		18	10%	76	28%	34	4%	27%	13	25%	44	25%	
	45-54				7	4%	40	15%		0%			6%	25	14%	
	55-64					1%	6	2%		0%				8	4%	
Arts and Humanities	16-20					853	87%			12	57%					
	21-24	9	22%	10%	236	72%	15	22%	81	8%		8	38%			
	25-34	17	41%	30%	63	19%	19	28%	31	3%						
	35-44	8	20%	30%	17	5%	8	12%		0%						
	45-54	5	12%	10%	6	2%	12	18%	7	1%	100%					
	55-64		2%	20%	8	2%	9	13%	6	1%			5%			
Science	16-20							1,053	90%			38%	11	14%		
	21-24	52	60%		141	69%	8	17%	79	7%		50%	21	26%		
	25-34	32	37%		51	25%	24	51%	31	3%	100%	13%	26	32%		
	35-44		3%		8	4%	8	17%	9	1%			10	12%		
	45-54					1%	9%		0%				11	14%		
	55-64			100%		0%	6%		0%					2%		
Social Sciences	16-20				5	1%		1,432	90%			12	23%			
	21-24	9	16%	12%	594	66%	22	8%	110	7%		36	68%			
	25-34	33	58%	5	29%	230	26%	80	31%	28	2%		4%			
	35-44	10	18%	18%	48	5%	101	39%	10	1%		4%				
	45-54		4%	5	29%	16	2%	45	17%		0%		2%			
	55-64		5%	6%		0%	11	4%		0%						
65+			6%			0%										

**Note:** Student populations of less than 5 are suppressed, therefore popl. may not add up to the overall totals for data protection reasons.

#### 4. Fee distribution. Headcount and percentage of active student population

##### Headline Institutional table - Total Population. Level of study, all mode of study

Intended Hesa Qualification Level 5 Way	HOME	EU	International	Exchange	Visitor	Other	Grand Total
01 - Postgraduate (research)	674	148	184			16	1,022
	66%	14%	18%			2%	100%
02 - Postgraduate (taught)	2,064	128	549				2,743
	75%	5%	20%		0%	0%	100%
03 - First degree	11,037	789	1,102			12	12,940
	85%	6%	9%			0%	100%
04 - Other undergraduate	401	5	6	40			456
	88%	1%	1%	9%	1%		100%
Grand Total	14,176	1,070	1,841	40	5	29	17,161
	83%	6%	11%	0%	0%	0%	100%

##### Headline Faculty table - Total Population. Level of study, all mode of study

Faculty	Intended Hesa Qualification Level 5 Way	HOME	EU	International	Exchange	Visitor	Other	Grand Total
Medicine and Health Sciences	01 - Postgraduate (research)	134	22	16				174
		77%	13%	9%			1%	100%
	02 - Postgraduate (taught)	539	20	51				611
		88%	3%	8%		0%		100%
	03 - First degree	2,191	94	143				2,429
		90%	4%	6%			0%	100%
	04 - Other undergraduate	279						283
		99%	1%					100%
Arts and Humanities	01 - Postgraduate (research)	164	14	23				203
		81%	7%	11%			1%	100%
	02 - Postgraduate (taught)	356	31	77				465
		77%	7%	17%			0%	100%
	03 - First degree	2,483	167	135			8	2,793
		89%	6%	5%			0%	100%
	04 - Other undergraduate				18			22
		9%			82%	9%		100%
Science	01 - Postgraduate (research)	229	77	78			8	392
		58%	20%	20%			2%	100%
	02 - Postgraduate (taught)	220	22	59				301
		73%	7%	20%				100%
	03 - First degree	3,022	251	213				3,487
		87%	7%	6%			0%	100%
	04 - Other undergraduate	93						98
		95%			4%	1%		100%
Social Sciences	01 - Postgraduate (research)	147	35	67				253
		58%	14%	26%			2%	100%
	02 - Postgraduate (taught)	949	55	362				1,366
		69%	4%	27%				100%
	03 - First degree	3,341	277	611				4,231
		79%	7%	14%			0%	100%
	04 - Other undergraduate	27		6	18			53
		51%	2%	11%	34%	2%		100%
Grand Total	14,176	1,070	1,841	40	5	29	17,161	
	83%	6%	11%	0%	0%	0%	100%	

**Note:** Student populations of less than 5 are suppressed, therefore popl. may not add up to the overall totals for data protection reasons.

## 5. Location - Postcode region - headcount and distribution of UK Domiciled, home fee paying active student population

### Headline Institutional table. Mode of study

Course Full Or Part Time	Postcode Region		
FT	East Midlands	697	6%
	East of England	6,839	54%
	London	2,078	16%
	North East	99	1%
	North West	198	2%
	South East	1,848	15%
	South West	344	3%
	West Midlands	268	2%
	Yorkshire and The Humber	227	2%
PT	East of England	1,130	87%
	London	80	6%
	South East	36	3%

### Headline Level of study table. Mode of study

Course Full Or Part Time	Postcode Region	01 - Postgraduate (research)		02 - Postgraduate (taught)		03 - First degree		04 - Other undergraduate	
FT	East Midlands	23	4%	48	5%	622	6%		4%
	East of England	325	62%	709	69%	5,726	52%	79	79%
	London	55	11%	95	9%	1,923	18%	5	5%
	North East	6	1%		0%	89	1%		1%
	North West	12	2%	11	1%	175	2%		
	South East	48	9%	98	10%	1,697	16%	5	5%
	South West	18	3%	34	3%	291	3%		1%
	West Midlands	15	3%	16	2%	236	2%		1%
	Yorkshire and The Humber	19	4%	15	1%	189	2%		4%
PT	East Midlands		3%	11	1%		2%		1%
	East of England	119	81%	760	86%	49	98%	202	91%
	London	11	7%	65	7%				2%
	North East				0%				
	North West		1%	8	1%				
	South East	6	4%	18	2%			12	5%
	South West		1%	9	1%				
	West Midlands		2%		0%				
	Yorkshire and The Humber		1%	8	1%				

**Note:** Student populations of less than 5 are suppressed, therefore popl. may not add up to the overall totals for data protection reasons.

## 5. Region - East of England - headcount and distribution of UK Domiciled, home fee paying active student population

### Headline Institutional table. Mode of study

Course Full Or Part Time	Postcode Nuts3		
FT	Bedford	62	1%
	Cambridgeshire CC	519	8%
	Central Bedfordshire	104	2%
	Essex CC	1,071	16%
	Hertfordshire	586	9%
	Luton	62	1%
	Norfolk	2,840	42%
	Peterborough	101	1%
	Southend-on-Sea	101	1%
	Suffolk	1,326	19%
	Thurrock	67	1%
PT	Cambridgeshire CC	61	5%
	Essex CC	144	13%
	Hertfordshire	26	2%
	Norfolk	648	57%
	Suffolk	203	18%
Thurrock	9	1%	

### Headline Level of study table. Mode of study

Course Full Or Part Time	Postcode Nuts3	01 - Postgraduate (research)		02 - Postgraduate (taught)		03 - First degree		04 - Other undergraduate	
FT	Bedford			5	1%	57	1%		
	Cambridgeshire CC	24	7%	46	6%	449	8%		
	Central Bedfordshire	6	2%		1%	94	2%		
	Essex CC	18	6%	61	9%	989	17%		4%
	Hertfordshire	15	5%	43	6%	527	9%		1%
	Luton		1%		0%	57	1%		
	Norfolk	198	61%	386	54%	2,197	38%	59	75%
	Peterborough		1%	10	1%	88	2%		
	Southend-on-Sea			5	1%	96	2%		
	Suffolk	58	18%	144	20%	1,108	19%	16	20%
	Thurrock		0%		0%	64	1%		
PT	Bedford		1%		0%				2%
	Cambridgeshire CC	7	6%	42	6%		6%	9	4%
	Central Bedfordshire				1%				1%
	Essex CC	9	8%	108	14%		2%	26	13%
	Hertfordshire		3%	10	1%			13	6%
	Luton							6	3%
	Norfolk	66	55%	453	60%	38	78%	91	45%
	Peterborough				1%				2%
	Southend-on-Sea			6	1%				2%
	Suffolk	32	27%	122	16%	7	14%	42	21%
	Thurrock		1%	8	1%				

**Note:** Student populations of less than 5 are suppressed, therefore popl. may not add up to the overall totals for data protection reasons.

## 6. International fee status headcount & distribution of full time active student population

New Starter  
Returner

### Headline Institutional table. Level of study

Intended Hesa Qualification Level 5 Way	2020/1
01 - Postgraduate (research)	183
02 - Postgraduate (taught)	502
03 - First degree	1,102

### Headline Faculty table. Level of study

Faculty	01 - Postgraduate (research)		02 - Postgraduate (taught)		03 - First degree		04 - Other undergraduate	
	Count	%	Count	%	Count	%	Count	%
Medicine and Health Sciences	16	9%	13	3%	143	13%		
Arts and Humanities	22	12%	73	15%	135	12%		
Science	78	43%	59	12%	213	19%		
Social Sciences	67	37%	357	71%	611	55%	6	100%

### Headline Faculty & Department table. Level of study

Faculty	Dept	Dept Code	01 - Postgraduate (research)		02 - Postgraduate (taught)		03 - First degree		04 - Other undergraduate
			Count	%	Count	%	Count	%	
Medicine and Health Sciences	Health Sciences	HSC	5	3%	5	1%	85	8%	
	Norwich Medical School at the University of East Anglia	MED	11	6%	8	2%	58	5%	
Arts and Humanities	Art, Media and American Studies	AMA	10	5%	12	2%	63	6%	
	Arts and Humanities	HUM			0%				
	History	HIS		1%		0%		0%	
	Literature, Drama and Creative Writing	LDC	7	4%	21	4%	30	3%	
	Politics, Philosophy, Language and Communication Studies	PPL		2%	38	8%	38	3%	
Science	Biological Sciences	BIO	17	9%	5	1%	26	2%	
	Chemistry	CHE	11	6%		0%	8	1%	
	Computing Sciences	CMP	15	8%	37	7%	88	8%	
	Engineering	ENG				0%	5	0%	
	Environmental Sciences	ENV	15	8%	12	2%	29	3%	
	Mathematics	MTH	10	5%				0%	
	Natural Sciences	NAT						0%	
	Pharmacy	PHA	10	5%		0%	53	5%	
	Physics	PHY						0%	
Social Sciences	Economics	ECO	14	8%	41	8%	124	11%	17%
	Education and Lifelong Learning	EDU	9	5%	18	4%	10	1%	
	International Development	DEV	15	8%	65	13%	33	3%	
	Law	LAW		2%	44	9%	69	6%	17%
	Norwich Business School	NBS	24	13%	187	37%	305	28%	
	Psychology	PSY		1%		0%	69	6%	67%
	Sociology	SOL						0%	

**Note:** Student populations of less than 5 are suppressed, therefore popl. may not add up to the overall totals for data protection reasons.



## 6. International fee status headcount & distribution of full time active student population

New Starter

### Headline Institutional table. Level of study

Intended Hesa Qualification Level 5 Way	2020/1
02 - Postgraduate (taught)	495
03 - First degree	321

### Headline Faculty table. Level of study

Faculty	01 - Postgraduate (research)		02 - Postgraduate (taught)		03 - First degree		04 - Other undergraduate	
Medicine and Health Sciences	10%		12	2%	48	15%		
Arts and Humanities	7	23%	72	15%	28	9%		
Science	8	27%	55	11%	54	17%		
Social Sciences	12	40%	356	72%	191	60%	6	100%

### Headline Faculty & Department table. Level of study

Faculty	Dept	Dept Code	01 - Postgraduate (res..)	02 - Postgraduate (taught)		03 - First degree		04 - Other undergraduate
Medicine and Health Sciences	Health Sciences	HSC		5	1%	36	11%	
	Norwich Medical School at the University of East Anglia	MED	10%	7	1%	12	4%	
Arts and Humanities	Art, Media and American Studies	AMA	7%	12	2%	11	3%	
	Arts and Humanities	HUM			0%			
	History	HIS			0%			
	Literature, Drama and Creative Writing	LDC	10%	21	4%	6	2%	
	Politics, Philosophy, Language and Communication Studies	PPL	7%	37	7%	11	3%	
Science	Biological Sciences	BIO	13%		1%	6	2%	
	Chemistry	CHE	7%		0%	5	2%	
	Computing Sciences	CMP		37	7%	19	6%	
	Engineering	ENG			0%		0%	
	Environmental Sciences	ENV	3%	10	2%	9	3%	
	Natural Sciences	NAT					0%	
	Pharmacy	PHA	3%		0%	13	4%	
Social Sciences	Economics	ECO	13%	41	8%	30	9%	17%
	Education and Lifelong Learning	EDU	10%	18	4%		1%	
	International Development	DEV	7%	64	13%	13	4%	
	Law	LAW		44	9%	21	7%	17%
	Norwich Business School	NBS	10%	187	38%	104	32%	
	Psychology	PSY			0%	19	6%	67%
	Sociology	SOL					0%	

**Note:** Student populations of less than 5 are suppressed, therefore popl. may not add up to the overall totals for data protection reasons.

## 6. Top 10 Domiciles: International fee status full time active student population

### Headline Institutional table. Country of domicile

Intended Hesa Qualification Level 5 Way	Rank of Student_Count	Domicile	Student_Count_Anonym..	% of Total Student_Count along Pane (Down)
01 - Postgraduate (research)	1	Saudi Arabia	48	27%
	2	China	33	19%
	3	Nigeria	8	4%
		USA	8	4%
		India	8	4%
	6	Hong Kong (Special Administrative Region of China)	7	4%
	7	Thailand	5	3%
		Egypt	5	3%
		Mexico	5	3%
	10	Brazil		2%
Turkey			2%	
Malaysia			2%	
02 - Postgraduate (taught)	1	China	214	43%
	2	India	58	12%
	3	Nigeria	33	7%
	4	Saudi Arabia	21	4%
	5	USA	20	4%
		Thailand	20	4%
	7	Vietnam	14	3%
	8	Japan	12	2%
		Taiwan, Republic of China (ROC)	12	2%
	10	Hong Kong (Special Administrative Region of China)	10	2%
Pakistan		10	2%	
03 - First degree	1	China	315	29%
	2	Hong Kong (Special Administrative Region of China)	244	22%
	3	Malaysia	76	7%
	4	India	35	3%
	5	Vietnam	27	2%
	6	Nigeria	23	2%
	7	Mauritius	20	2%
	8	Japan	19	2%
USA		19	2%	
Russia		19	2%	
04 - Other undergraduate	1	Spain		33%
	2	Japan		17%
		USA		17%
		Pakistan		17%
		Russia		17%

**Note:** Student populations of less than 5 are suppressed, therefore popl. may not add up to the overall totals for data protection reasons.

## 7. Annual snapshot of currently enrolled active student population

(Dec cal wk-49, APR Cal wk-14)

Snapshot Month

○ APR

● DEC

### Institutional, level of study

Intended Hesa Qualification Level 5 Way	Academic Year					% Difference in Student Count from the Previous along Table (Across)				
	Student Count					2016/7	2017/8	2018/9	2019/0	2020/1
	2016/7	2017/8	2018/9	2019/0	2020/1	2016/7	2017/8	2018/9	2019/0	2020/1
01 - Postgraduate (research)	1,144	1,156	1,339	1,145	1,013	▲1.0%	▲15.8%	▼-14.5%	▼-11.5%	
02 - Postgraduate (taught)	2,665	2,663	2,650	2,656	2,638	▼-0.1%	▼-0.5%	▲0.2%	▼-0.7%	
03 - First degree	11,093	11,832	11,997	12,283	12,854	▲6.7%	▲1.4%	▲2.4%	▲4.6%	
04 - Other undergraduate	546	550	696	809	469	▲0.7%	▲26.5%	▲16.2%	▼-42.0%	
<b>Grand Total</b>	<b>15,448</b>	<b>16,201</b>	<b>16,682</b>	<b>16,893</b>	<b>16,974</b>	<b>▲4.9%</b>	<b>▲3.0%</b>	<b>▲1.3%</b>	<b>▲0.5%</b>	

### Faculty, level of study

Faculty Code	Intended Hesa Qualification Level 5 ..	Academic Year					% Difference in Student Count from the Previous along Table (Across)				
		Student Count					2016/7	2017/8	2018/9	2019/0	2020/1
		2016/7	2017/8	2018/9	2019/0	2020/1	2016/7	2017/8	2018/9	2019/0	2020/1
FMH	01 - Postgraduate (research)	184	192	209	203	170	▲4.3%	▲8.9%	▼-2.9%	▼-16.3%	
	02 - Postgraduate (taught)	245	331	257	392	497	▲35.1%	▼-22.4%	▲52.5%	▲26.8%	
	03 - First degree	2,039	2,115	2,103	2,271	2,410	▲3.7%	▼-0.6%	▲8.0%	▲6.1%	
	04 - Other undergraduate	228	167	238	288	264	▼-26.8%	▲42.5%	▲21.0%	▼-8.3%	
	<b>Total</b>	<b>2,696</b>	<b>2,805</b>	<b>2,807</b>	<b>3,154</b>	<b>3,341</b>	<b>▲4.0%</b>	<b>▲0.1%</b>	<b>▲12.4%</b>	<b>▲5.9%</b>	
HUM	01 - Postgraduate (research)	256	236	258	213	198	▼-7.8%	▲9.3%	▼-17.4%	▼-7.0%	
	02 - Postgraduate (taught)	494	492	521	494	467	▼-0.4%	▲5.9%	▼-5.2%	▼-5.5%	
	03 - First degree	3,121	3,285	3,132	2,985	2,805	▲5.3%	▼-4.7%	▼-4.7%	▼-6.0%	
	04 - Other undergraduate	148	138	137	109	24	▼-6.8%	▼-0.7%	▼-20.4%	▼-78.0%	
	<b>Total</b>	<b>4,019</b>	<b>4,151</b>	<b>4,048</b>	<b>3,801</b>	<b>3,494</b>	<b>▲3.3%</b>	<b>▼-2.5%</b>	<b>▼-6.1%</b>	<b>▼-8.1%</b>	
SCI	01 - Postgraduate (research)	456	484	554	455	392	▲6.1%	▲14.5%	▼-17.9%	▼-13.8%	
	02 - Postgraduate (taught)	193	225	212	233	297	▲16.6%	▼-5.8%	▲9.9%	▲27.5%	
	03 - First degree	2,718	2,816	3,068	3,136	3,398	▲3.6%	▲8.9%	▲2.2%	▲8.4%	
	04 - Other undergraduate	40	126	209	280	121	▲215.0%	▲65.9%	▲34.0%	▼-56.8%	
	<b>Total</b>	<b>3,407</b>	<b>3,651</b>	<b>4,043</b>	<b>4,104</b>	<b>4,208</b>	<b>▲7.2%</b>	<b>▲10.7%</b>	<b>▲1.5%</b>	<b>▲2.5%</b>	
SSF	01 - Postgraduate (research)	248	244	318	274	253	▼-1.6%	▲30.3%	▼-13.8%	▼-7.7%	
	02 - Postgraduate (taught)	1,733	1,615	1,660	1,537	1,377	▼-6.8%	▲2.8%	▼-7.4%	▼-10.4%	
	03 - First degree	3,215	3,616	3,694	3,891	4,241	▲12.5%	▲2.2%	▲5.3%	▲9.0%	
	04 - Other undergraduate	130	119	112	132	60	▼-8.5%	▼-5.9%	▲17.9%	▼-54.5%	
	<b>Total</b>	<b>5,326</b>	<b>5,594</b>	<b>5,784</b>	<b>5,834</b>	<b>5,931</b>	<b>▲5.0%</b>	<b>▲3.4%</b>	<b>▲0.9%</b>	<b>▲1.7%</b>	
<b>Grand Total</b>	<b>15,448</b>	<b>16,201</b>	<b>16,682</b>	<b>16,893</b>	<b>16,974</b>	<b>▲4.9%</b>	<b>▲3.0%</b>	<b>▲1.3%</b>	<b>▲0.5%</b>		

7. Annual snapshot of currently enrolled active student population

Snapshot Month  
 APR  
 DEC

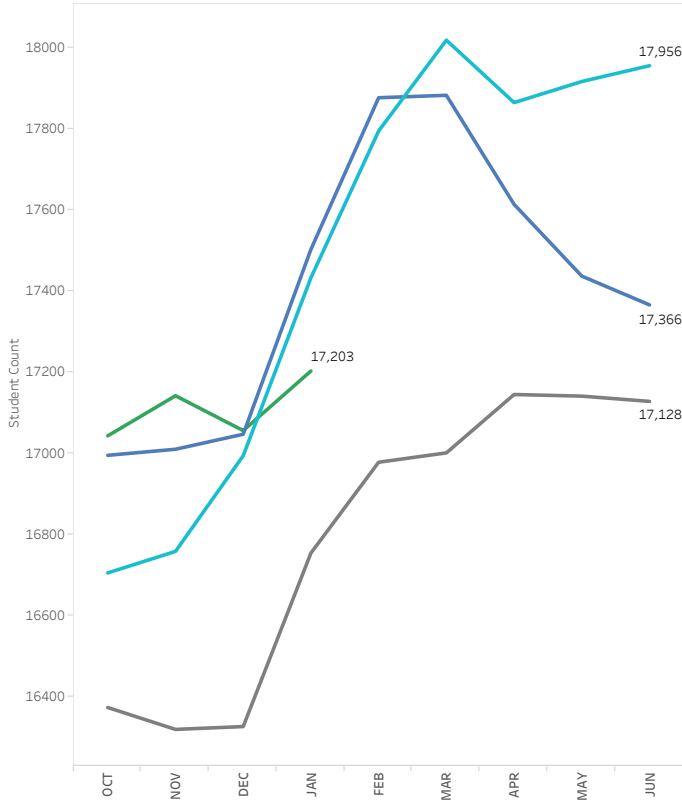
Dept by year

		Intended Hesa Qualification Level 5 Way / Academic Year																				
		01 - Postgraduate (research)					02 - Postgraduate (taught)					03 - First degree					04 - Other undergraduate					
Student Count	Facult.. Dept Code	2016/7	2017/8	2018/9	2019/0	2020/1	2016/7	2017/8	2018/9	2019/0	2020/1	2016/7	2017/8	2018/9	2019/0	2020/1	2016/7	2017/8	2018/9	2019/0	2020/1	
Student Count	FMH HSC	23	22	29	47	33	141	112	135	176	279	1,217	1,269	1,231	1,342	1,436	169	164	236	142	192	
		161	170	180	156	137	104	219	122	216	218	822	846	872	929	974	59			146	72	
	HUM AMA	90	70	72	66	58	117	101	128	94	73	759	747	675	584	544	30	34	32	20	7	
		HUM HIS	53	56	58	48	46	44	35	60	56	59	547	650	659	589	530	14	8	5	7	
			HUM LDC	70	71	83	62	64	147	138	161	157	188	804	801	748	731	732	37	48	37	32
		HUM MUS		42	39	45	37	30	176	207	151	166	124	846	921	882	904	897	67	48	63	50
			SCI BIO	208	222	267	209	177	71	75	53	66	81	653	703	785	814	876	23	34	22	20
		SCI CHE		46	35	42	34	30	10		6	6		236	226	259	241	243				
	SCI CMP			36	44	51	48	38	42	52	58	46	83	493	534	609	647	716		5	5	
		SCI ENG							14	8	8		9	62	89	115	146	173				
	SCI ENV			93	103	113	95	87	44	62	54	48	66	498	545	534	525	515	10	8	12	7
		SCI MTH		29	29	29	28	28						255	249	260	225	211				
	SCI NAT													85	75	70	55	59				
		SCI PHA		44	51	52	41	32	12	26	33	64	56	436	395	436	483	605		78	165	250
	SSF DEV			51	44	46	42	30	173	150	169	147	140	351	372	378	434	430	17	11	9	31
		SSF ECO		23	26	33	28	24	121	107	166	126	94	715	791	729	684	685	7	22	26	23
			SSF EDU	64	54	96	82	97	504	499	379	426	399	209	263	322	342	366		6		7
		SSF LAW		24	23	30	22	15	99	82	83	96	55	521	541	491	514	586	73	59	49	42
			SSF NBS	47	57	67	60	51	487	505	567	532	372	852	962	1,043	1,133	1,266		5		7
		SSF PSY		32	32	37	27	23	37	41	41	45	39	504	614	654	715	769	27	16	21	22
SSF SOL																	47					
		SSF SWK	7	8	9	13	13	312	231	255	165	278	63	73	77	69	92					
% Difference in Student Count from the Previous along Pane (Across)	FMH HSC		▼-4.3%	▲31.8%	▲62.1%	▼-29.8%		▼-20.6%	▲20.5%	▲30.4%	▲58.5%		▲4.3%	▼-3.0%	▲9.0%	▲7.0%		▼-3.0%	▲43.9%	▼-39.8%	▲35.2%	
		▲5.6%	▲5.9%	▼-13.3%	▼-12.2%		▲110.6%	▼-44.3%	▲77.0%	▲0.9%		▲2.9%	▲3.1%	▲6.5%	▲4.8%					#####	▼-50.7%	
	HUM AMA	▼-22.2%	▲2.9%	▼-8.3%	▼-12.1%		▼-13.7%	▲26.7%	▼-26.6%	▼-22.3%		▼-1.6%	▼-9.6%	▼-13.5%	▼-6.8%		▲13.3%	▼-5.9%	▼-37.5%	▼-65.0%		
		HUM HIS	▲5.7%	▲3.6%	▼-17.2%	▼-4.2%		▼-20.5%	▲71.4%	▼-6.7%	▲5.4%		▲18.8%	▲1.4%	▼-10.6%	▼-10.0%		▼-42.9%	▼-37.5%	▲40.0%		
			HUM HUM-LON						▲10.0%	▲90.9%	▲0.0%	▲9.5%		▲0.6%	▲1.2%	▲5.4%	▼-42.4%					
		HUM LDC		▲1.4%	▲16.9%	▼-25.3%	▲3.2%		▼-6.1%	▲16.7%	▼-2.5%	▲19.7%		▼-0.4%	▼-6.6%	▼-2.3%	▲0.1%		▲29.7%	▼-22.9%	▼-13.5%	
			HUM MUS																			
		HUM PPL		▼-7.1%	▲15.4%	▼-17.8%	▼-18.9%		▲17.6%	▼-27.1%	▲9.9%	▼-25.3%		▲8.9%	▼-4.2%	▲2.5%	▼-0.8%		▼-28.4%	▲31.3%	▼-20.6%	▼-74.0%
	SCI BIO		▲6.7%	▲20.3%	▼-21.7%	▼-15.3%		▲5.6%	▼-29.3%	▲24.5%	▲22.7%		▲7.7%	▲11.7%	▲3.7%	▲7.6%		▲47.8%	▼-35.3%	▼-9.1%	▼-60.0%	
		SCI CHE	▼-23.9%	▲20.0%	▼-19.0%	▼-11.8%			▲200.0%	▲0.0%			▼-4.2%	▲14.6%	▼-6.9%	▲0.8%						
			SCI CMP	▲22.2%	▲15.9%	▼-5.9%	▼-20.8%		▲23.8%	▲11.5%	▼-20.7%	▲80.4%		▲8.3%	▲14.0%	▲6.2%	▲10.7%		▲25.0%	▲0.0%		
		SCI ENG							▼-42.9%	▲0.0%		▲200.0%		▲43.5%	▲29.2%	▲27.0%	▲18.5%					
			SCI ENV	▲10.8%	▲9.7%	▼-15.9%	▼-8.4%		▲40.9%	▼-12.9%	▼-11.1%	▲37.5%		▲9.4%	▼-2.0%	▼-1.7%	▼-1.9%		▼-20.0%	▲50.0%	▼-41.7%	
		SCI MTH		▲0.0%	▲0.0%	▼-3.4%	▲0.0%							▼-2.4%	▲4.4%	▼-13.5%	▼-6.2%					
			SCI NAT											▼-11.8%	▼-6.7%	▼-21.4%	▲7.3%					
		SCI PHA		▲15.9%	▲2.0%	▼-21.2%	▼-22.0%		▲116.7%	▲26.9%	▲93.9%	▼-12.5%		▼-9.4%	▲10.4%	▲10.8%	▲25.3%		#####	▲111.5%	▲51.5%	▼-54.8%
			SSF DEV	▼-13.7%	▲4.5%	▼-8.7%	▼-28.6%		▼-13.3%	▲12.7%	▼-13.0%	▼-4.8%		▲6.0%	▲1.6%	▲14.8%	▼-0.9%		▼-35.3%	▼-18.2%	▲244.4%	
		SSF ECO		▲13.0%	▲26.9%	▼-15.2%	▼-14.3%		▼-11.6%	▲55.1%	▼-24.1%	▼-25.4%		▲10.6%	▼-7.8%	▼-6.2%	▲0.1%		▲214.3%	▲18.2%	▼-11.5%	▼-69.6%
	SSF EDU			▼-15.6%	▲77.8%	▼-14.6%	▲18.3%		▼-1.0%	▼-24.0%	▲12.4%	▼-6.3%		▲25.8%	▲22.4%	▲6.2%	▲7.0%		▲200.0%		▲133.3%	
		SSF HIS																				
SSF LAW	▼-4.2%			▲30.4%	▼-26.7%	▼-31.8%		▼-17.2%	▲1.2%	▲15.7%	▼-42.7%		▲3.8%	▼-9.2%	▲4.7%	▲14.0%		▼-19.2%	▼-16.9%	▼-14.3%	▼-7.1%	
	SSF NBS	▲21.3%		▲17.5%	▼-10.4%	▼-15.0%		▲3.7%	▲12.3%	▼-6.2%	▼-30.1%		▲12.9%	▲8.4%	▲8.6%	▲11.7%		▲25.0%		▲75.0%		
SSF NBS-LON																						
	SSF PSY	▲0.0%		▲15.6%	▼-27.0%	▼-14.8%		▲10.8%	▲0.0%	▲9.8%	▼-13.3%		▲21.8%	▲6.5%	▲9.3%	▲7.6%		▼-40.7%	▲31.3%	▲4.8%	▼-77.3%	
SSF SOL																						
	SSF SWK	▲14.3%	▲12.5%	▲44.4%	▲0.0%		▼-26.0%	▲10.4%	▼-35.3%	▲68.5%		▲15.9%	▲5.5%	▼-10.4%	▲33.3%							

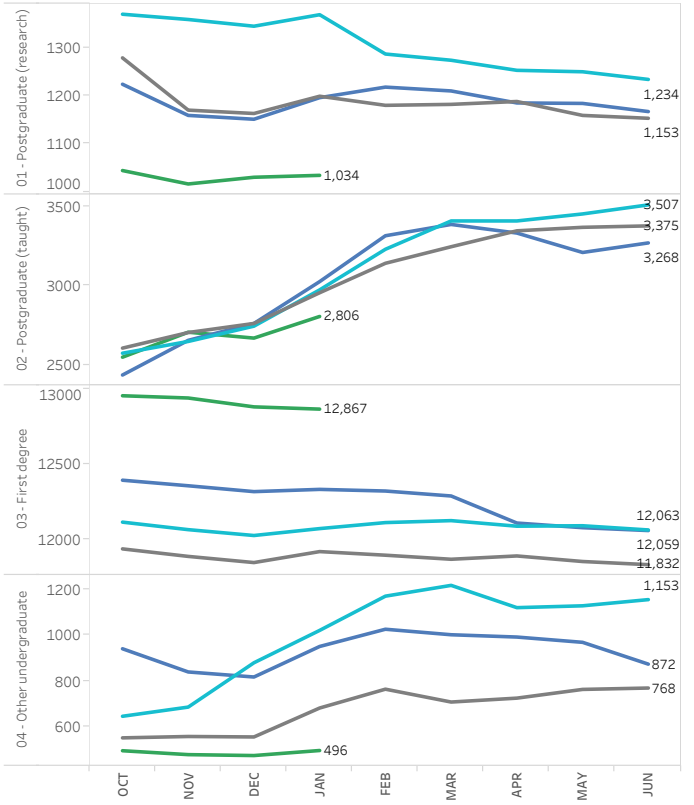
## 7. Monthly snapshot of currently enrolled active student population - Total population

Academic Year  
 2017/8 (Grey)  
 2018/9 (Cyan)  
 2019/0 (Blue)  
 2020/1 (Green)

Institutional Snapshot monthly comparison



Institutional Snapshot monthly comparison by level

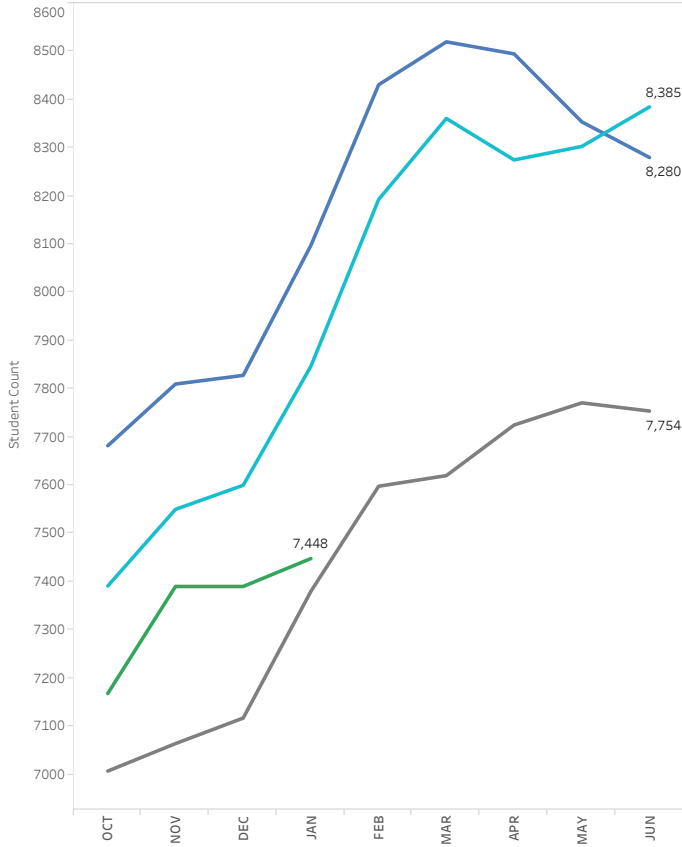


Note: Due to multiple entry cohorts starting in-cycle, it is expected to see peaks in student enrollment numbers leading up to the start of the new calendar year.

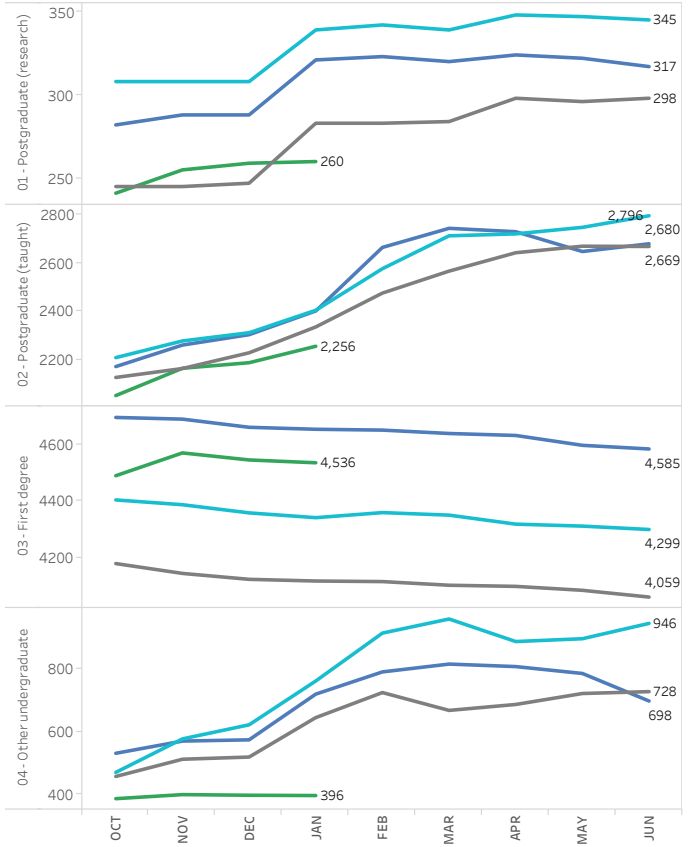
## 7. Monthly snapshot of currently enrolled active student population - New Starter

Academic Year  
 2017/8 2018/9 2019/0 2020/1

Institutional Snapshot monthly comparison



Institutional Snapshot monthly comparison by level



## 8. Awards - Level of qualification

### Headline Institutional table - 5 year timeseries

Course Acad Award Year	01 - Doctorate	02 - Other higher degree	03 - Postgraduate Certificate in Education	04 - Other postgraduate	05 - First degree	08 - HND/DipHE	09 - Other undergraduate	Grand Total
2015/6	250	1,648	264	331	2,798	69	232	5,592
2016/7	280	1,609	235	330	2,648	136	163	5,401
2017/8	242	1,691	268	371	3,315	143	244	6,274
2018/9	241	1,758	235	368	3,568	153	252	6,575
2019/0	233	1,825	235	326	3,231	72	162	6,084

### Headline Faculty table. 2019/0 only. Level of qualification

Faculty	01 - Doctorate	02 - Other higher degree	03 - Postgraduate Certificate in Education	04 - Other postgraduate	05 - First degree	08 - HND/DipHE	09 - Other undergraduate	Grand Total
Medicine and Health Sciences	46	158		108	601	51	31	995
Arts and Humanities	46	418		6	877	11	59	1,417
Science	91	148		33	679	7	32	990
Social Sciences	50	1,101	235	179	1,074		40	2,682

### Headline Departmental table. 2019/0 only. Level of qualification

Faculty	Dept	01 - Doctorate	02 - Other higher degree	03 - Postgraduate Certificate in Education	04 - Other postgraduate	05 - First degree	08 - HND/DipHE	09 - Other undergraduate	Grand Total
Medicine and Health Sciences	Health Sciences		87		12	435	50	26	611
	Norwich Medical School at the Uni..	45	71		96	166		5	384
Arts and Humanities	Art, Media and American Studies	16	100			195		34	346
	Arts and Humanities		16						18
	History	7	50			222			282
	Literature, Drama and Creative Wr..	14	115			210	6	9	355
	Politics, Philosophy, Language and..	9	137			250		14	416
Science	Biological Sciences	50	48			209		13	320
	Chemistry	6	5			47			60
	Computing Sciences		41		6	102		11	166
	Engineering		8			27			36
	Environmental Sciences	13	46			139			202
	Mathematics	6				51			59
	Natural Sciences					14			16
	Pharmacy	12			25	85			126
	Physics					5			5
Social Sciences	Economics	8	156		7	209		5	386
	Education and Lifelong Learning	11	75	234	62	90			472
	International Development	9	152			97			261
	Law	7	70			141		27	249
	Norwich Business School	8	567		6	330			916
	Psychology	6	31			188			231
	Social Work		50		96	19			166

**Note:** Student populations of less than 5 are suppressed, therefore popl. may not add up to the overall totals for data protection reasons.

## 8. Award - Classification and Good honours proportion of undergraduate first degree awards

### Headline Institutional table - 5 year timeseries

Course Acad ..	YES				NO			Grand Total
	I*	I	II(1)	Total	II(2)	III	Total	
Student_Count.. 2015/6	100	809	1,390	2,299	314	41	355	2,654
2016/7	80	817	1,297	2,194	274	32	306	2,500
2017/8	89	1,064	1,622	2,775	359	37	396	3,171
2018/9	36	1,098	1,766	2,900	466	40	506	3,406
2019/0		1,047	1,599	2,646	397	21	418	3,064
% of Total Fact Award Count along Table (Across) 2015/6	3.8%	30.5%	52.4%	86.6%	11.8%	1.5%	13.4%	100.0%
2016/7	3.2%	32.7%	51.9%	87.8%	11.0%	1.3%	12.2%	100.0%
2017/8	2.8%	33.6%	51.2%	87.5%	11.3%	1.2%	12.5%	100.0%
2018/9	1.1%	32.2%	51.8%	85.1%	13.7%	1.2%	14.9%	100.0%
2019/0		34.2%	52.2%	86.4%	13.0%	0.7%	13.6%	100.0%

### Headline Faculty & Department table. 2019/0 only

Faculty	Dept	Dept ..	YES					NO			Grand Total	
			I	II(1)	MBBS	D	M	Total	II(2)	III		Total
Medicine and Health Sciences	Health Sciences	HSC	41.6% (181)	36.3% (158)				77.9% (339)	20.0% (87)	2.1% (9)	22.1% (96)	100.0% (435)
	Norwich Medical School at the Univers..	MED			86.7% (144)	7.8% (13)	5.4% (9)	100.0% (166)				100.0% (166)
Arts and Humanities	Art, Media and American Studies	AMA	31.8% (62)	54.9% (107)				86.7% (169)	12.8% (25)	0.5% (1)	13.3% (26)	100.0% (195)
	History	HIS	27.5% (61)	62.2% (138)				89.6% (199)	10.4% (23)		10.4% (23)	100.0% (222)
	Literature, Drama and Creative Writing	LDC	31.9% (67)	64.3% (135)				96.2% (202)	3.8% (8)		3.8% (8)	100.0% (210)
	Politics, Philosophy, Language and Comm..	PPL	28.4% (71)	60.8% (152)				89.2% (223)	10.8% (27)		10.8% (27)	100.0% (250)
Science	Biological Sciences	BIO	40.9% (85)	48.6% (101)				89.4% (186)	10.1% (21)	0.5% (1)	10.6% (22)	100.0% (208)
	Chemistry	CHE	51.1% (24)	40.4% (19)				91.5% (43)	8.5% (1)		8.5% (1)	100.0% (47)
	Computing Sciences	CMP	50.0% (51)	35.3% (36)				85.3% (87)	11.8% (12)	2.9% (1)	14.7% (15)	100.0% (102)
	Engineering	ENG	40.7% (11)	55.6% (15)				96.3% (26)	3.7% (1)		3.7% (1)	100.0% (27)
	Environmental Sciences	ENV	38.1% (53)	49.6% (69)				87.8% (122)	10.8% (15)	1.4% (1)	12.2% (17)	100.0% (139)
	Mathematics	MTH	45.1% (23)	41.2% (21)				86.3% (44)	13.7% (7)		13.7% (7)	100.0% (51)
	Natural Sciences	NAT	57.1% (8)	35.7% (5)				92.9% (13)	7.1% (1)		7.1% (1)	100.0% (14)
	Pharmacy	PHA	42.4% (36)	52.9% (45)				95.3% (81)	4.7% (1)		4.7% (1)	100.0% (85)
	Physics	PHY	40.0% (1)	20.0% (1)				60.0% (1)	40.0% (1)		40.0% (1)	100.0% (5)
Social Sciences	Economics	ECO	34.0% (71)	49.3% (103)				83.3% (174)	15.8% (33)	1.0% (1)	16.7% (35)	100.0% (209)
	Education and Lifelong Learning	EDU	28.9% (26)	46.7% (42)				75.6% (68)	24.4% (22)		24.4% (22)	100.0% (90)
	International Development	DEV	38.1% (37)	58.8% (57)				96.9% (94)	3.1% (1)		3.1% (1)	100.0% (97)
	Law	LAW	12.1% (17)	74.5% (105)				86.5% (122)	13.5% (19)		13.5% (19)	100.0% (141)
	Norwich Business School	NBS	36.4% (120)	47.0% (155)				83.3% (275)	16.1% (53)	0.6% (1)	16.7% (55)	100.0% (330)
	Psychology	PSY	19.1% (36)	66.0% (124)				85.1% (160)	14.4% (27)	0.5% (1)	14.9% (28)	100.0% (188)
	Social Work	SWK	26.3% (5)	57.9% (11)				84.2% (16)	15.8% (1)		15.8% (1)	100.0% (19)

**Note:** Student populations of less than 5 are suppressed, therefore popl. may not add up to the overall totals for data protection reasons.