

UEA Student Facts and Figures 2019/20

Data extracted on:

21/01/2020

Purpose

To present in cycle, interim, active student population demographic figures for the purpose of external queries.

Data specification

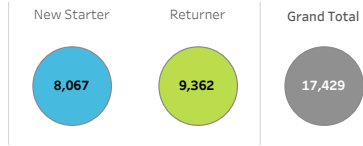
- Note that where headcounts and percentages have a base size of less than five students the count has been suppressed, therefore populations may not add up to the overall totals for data protection reasons.
- Data extract taken in December each year
- All figures are a headcount, or percentage thereof and include "Active" census reportable students only 'Current status'
- Students studying at the Research Institutes are included in the relevant department within the Faculty of Science.

Contents

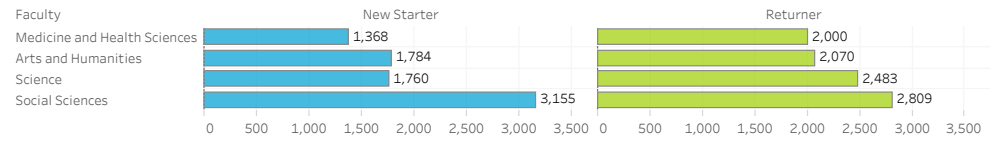
1. **Active student Population:** Headline institutional, faculty & departmental split
 - a) New starter/returner - All levels
 - b) New starter/returner - Postgraduate Research
 - c) New starter/returner - Postgraduate Taught
 - d) New starter/returner - First degree
 - e) New starter/returner - Other undergraduate
 - f) Total population - Mode of study (full time [FT]/ part time [PT])
 - g) New starter population - Mode of study
2. **Gender:** level of study, faculty & departmental split
 - a) Total population
 - b) New starter population
3. **Age band:** Mode of study, level of study - Institutional & faculty split
 - a) Total population
 - b) New starter population
4. **Fee:** Student fee paying type
 - a) Total population - Level of study, institutional & faculty split
 - b) Total population - faculty, departmental split
5. **Location:** UK postcode region & East of England
 - a) Postcode region - Total population: mode of study, level of study
 - b) East of England - Total population: mode of study
6. **International:** International Fee paying, Full time, level of study, faculty & departmental split
 - a) Total population
 - b) New starter population
 - c) Top 10 domiciles - level of study
7. **Snapshot:** Institutional, faculty & departmental split
 - a) Total population annual snapshot - level of study, institutional & faculty split
 - b) Total population annual snapshot - faculty, departmental split
 - c) Total population monthly snapshot - level of study, institutional
 - d) New starter population monthly snapshot - level of study, institutional
8. **Awards:** Institutional, faculty & department
 - a) Level of qualification
 - b) UG awards by classification



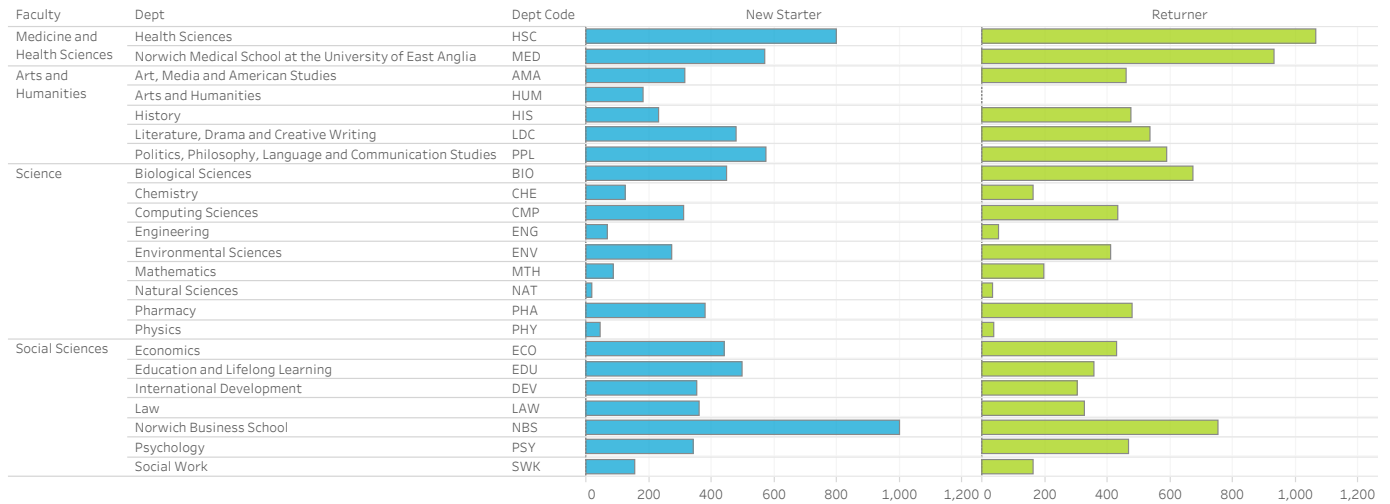
Institutional



Faculty, new starter and returner

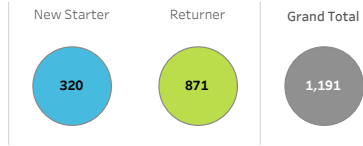


Faculty, department, new starter and returner

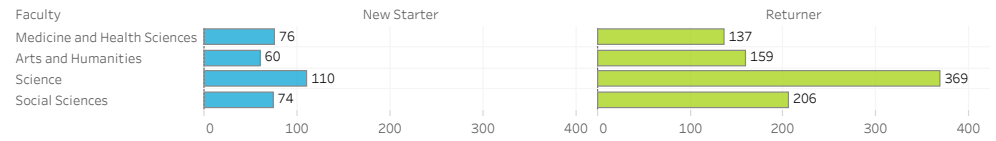


Note: Student populations of less than 5 are suppressed, therefore popl. may not add up to the overall totals for data protection reasons.

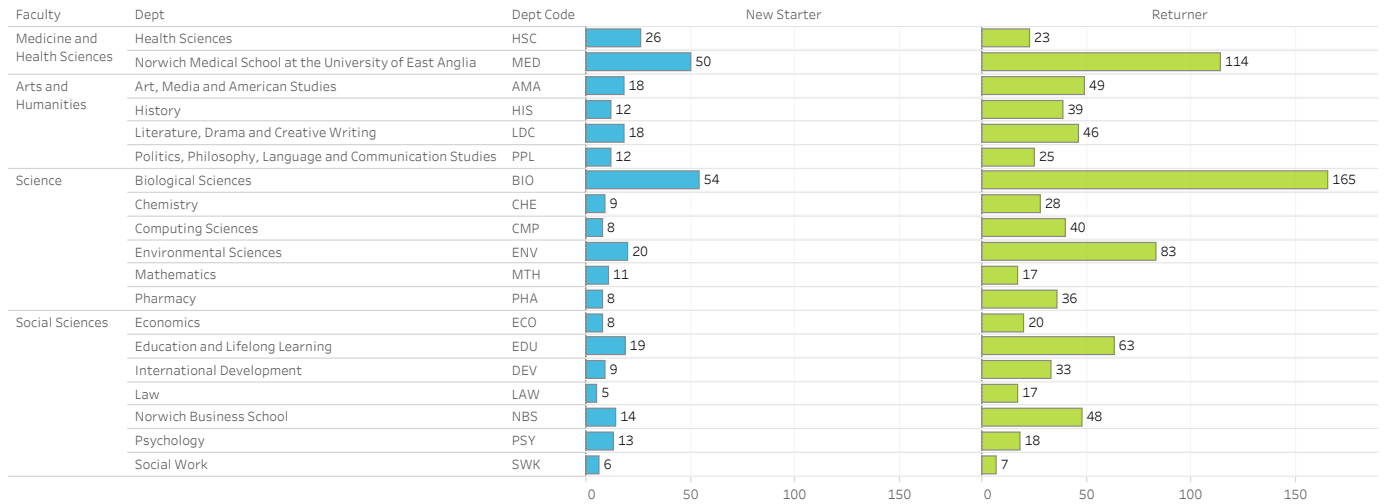
Institutional



Faculty, new starter and returner

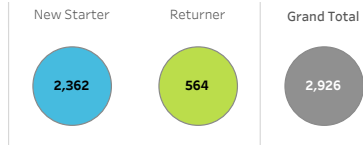


Faculty, department, new starter and returner

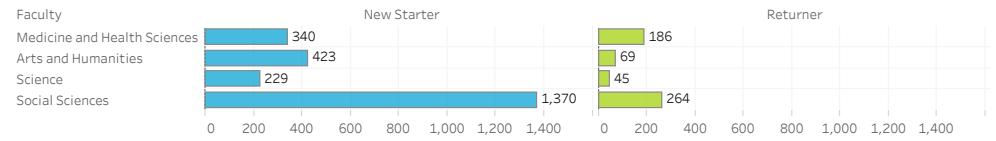


Note: Student populations of less than 5 are suppressed, therefore popl. may not add up to the overall totals for data protection reasons.

Institutional



Faculty, new starter and returner

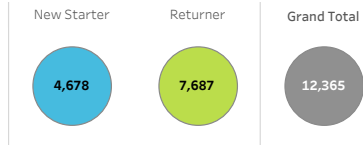


Faculty, department, new starter and returner

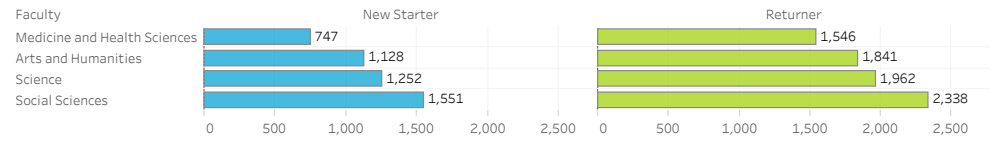
Faculty	Dept	Dept Code	New Starter	Returner
Medicine and Health Sciences	Health Sciences	HSC	125	142
	Norwich Medical School at the University of East Anglia	MED	215	44
Arts and Humanities	Art, Media and American Studies	AMA	79	16
	Arts and Humanities	HUM	16	7
	History	HIS	49	35
	Literature, Drama and Creative Writing	LDC	124	8
Science	Politics, Philosophy, Language and Communication Studies	PPL	155	7
	Biological Sciences	BIO	63	6
	Chemistry	CHE	5	28
	Computing Sciences	CMP	41	6
	Environmental Sciences	ENV	45	7
	Pharmacy	PHA	72	28
	Social Sciences	Economics	ECO	125
Social Sciences	Education and Lifelong Learning	EDU	338	9
	International Development	DEV	137	5
	Law	LAW	93	49
	Norwich Business School	NBS	510	5
	Psychology	PSY	40	110
	Social Work	SWK	126	110

Note: Student populations of less than 5 are suppressed, therefore popl. may not add up to the overall totals for data protection reasons.

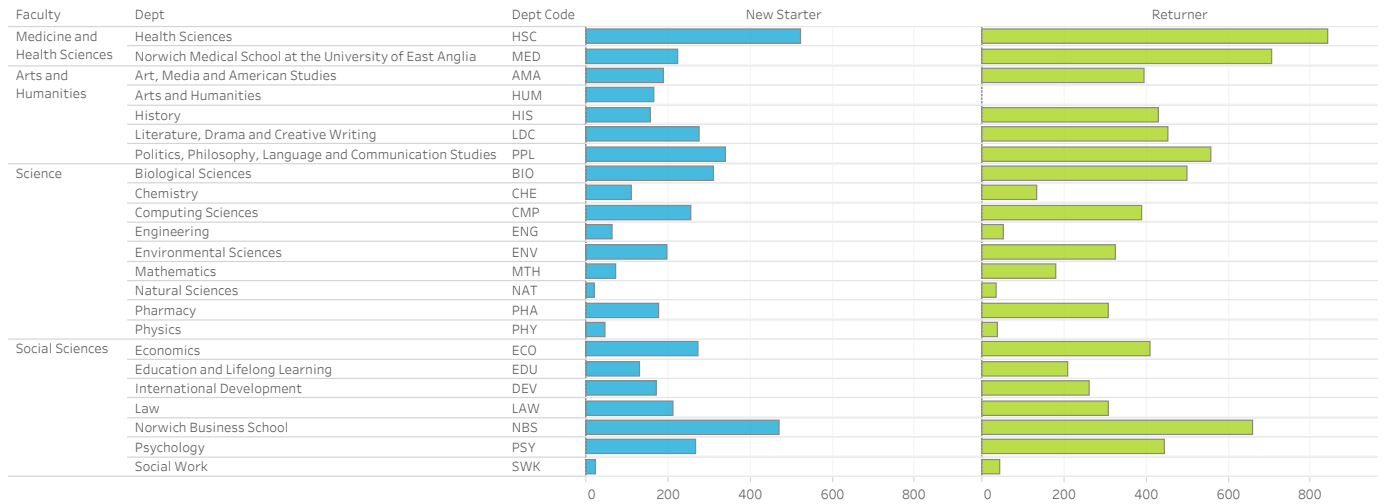
Institutional



Faculty, new starter and returner

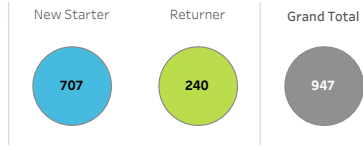


Faculty, department, new starter and returner

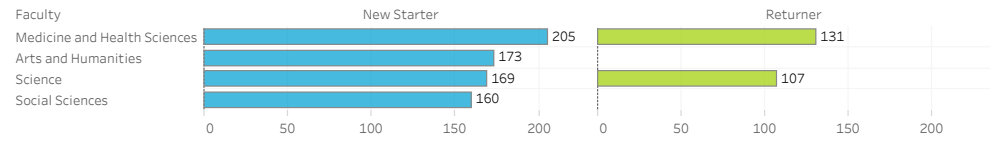


Note: Student populations of less than 5 are suppressed, therefore popl. may not add up to the overall totals for data protection reasons.

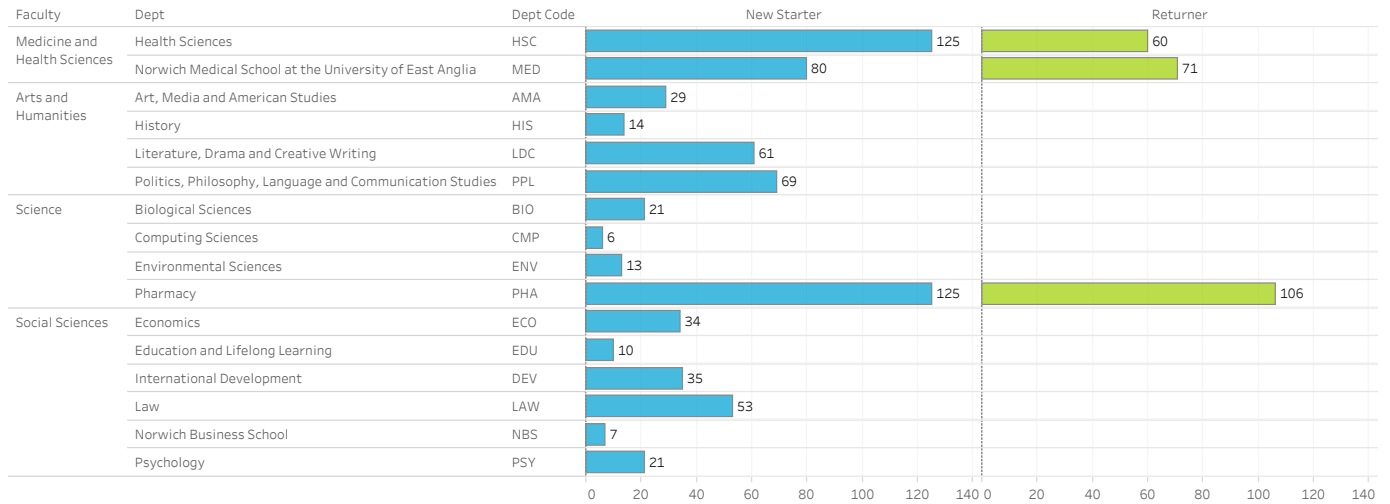
Institutional



Faculty, new starter and returner



Faculty, department, new starter and returner



Note: Student populations of less than 5 are suppressed, therefore popl. may not add up to the overall totals for data protection reasons.

1. Headcount of active student population:

New Starter
Returner

Headline institutional table. Level of study and mode of study

Intended Hesa Qualification Level 5 Way	FT	PT	Total
01 - Postgraduate (research)	985	206	1,191
02 - Postgraduate (taught)	1,940	986	2,926
03 - First degree	12,272	93	12,365
04 - Other undergraduate	443	504	947
Grand Total	15,640	1,789	17,429

Headline Faculty table. Level of study and mode of study

Faculty	01 - Postgraduate (research)		02 - Postgraduate (taught)		03 - First degree		04 - Other undergraduate	
	FT	PT	FT	PT	FT	PT	FT	PT
Medicine and Health Sciences	175	38	183	343	2,211	82	63	273
Arts and Humanities	130	89	383	109	2,962	7	174	
Science	454	25	157	117	3,210		45	231
Social Sciences	226	54	1,217	417	3,889		161	

Headline Faculty & department table. Level of study and mode of study

Faculty	Dept	Dept Code	01 - Postgraduate (research)		02 - Postgraduate (taught)		03 - First degree		04 - Other undergraduate	
			FT	PT	FT	PT	FT	PT	FT	PT
Medicine and Health Sciences	Health Sciences	HSC	23	26	47	220	1,281	82	61	124
	Norwich Medical School at the University of East Anglia	MED	152	12	136	123	930			149
Arts and Humanities	Art, Media and American Studies	AMA	37	30	84	11	583			29
	Arts and Humanities	HUM			13	6	170			
	History	HIS	25	26	40	16	581	6		14
	Literature, Drama and Creative Writing	LDC	44	20	100	59	729			62
	Politics, Philosophy, Language and Communication Studies	PPL	24	13	146	17	899			69
Science	Biological Sciences	BIO	217		65	5	807			21
	Chemistry	CHE	37		6		242			
	Computing Sciences	CMP	41	7	34	13	644			6
	Engineering	ENG					118			
	Environmental Sciences	ENV	94	9	41	7	522			13
	Mathematics	MTH	26				252			
	Natural Sciences	NAT					55			
	Pharmacy	PHA	39	5	8	92	486			230
	Physics	PHY					84			
Social Sciences	Economics	ECO	28		126		683			34
	Education and Lifelong Learning	EDU	46	36	289	136	340			10
	International Development	DEV	39		135	11	434			36
	Law	LAW	19		92		521			53
	Norwich Business School	NBS	55	7	486	73	1,129			7
	Psychology	PSY	28		36	9	713			21
	Social Work	SWK	11		52	184	69			

Note: Student populations of less than 5 are suppressed, therefore popl. may not add up to the overall totals for data protection reasons.

1. Headcount of active student population: New Starter

Headline institutional table. Level of study and mode of study

Intended Hesa Qualification Level 5 Way	FT	PT	Total
01 - Postgraduate (research)	267	53	320
02 - Postgraduate (taught)	1,833	529	2,362
03 - First degree	4,661	17	4,678
04 - Other undergraduate	421	286	707
Grand Total	7,182	885	8,067

Headline Faculty table. Level of study and mode of study

Faculty	01 - Postgraduate (research)		02 - Postgraduate (taught)		03 - First degree		04 - Other undergraduate	
	FT	PT	FT	PT	FT	PT	FT	PT
Medicine and Health Sciences	54	22	138	202	730	17	43	162
Arts and Humanities	40	20	364	59	1,128		173	
Science	104		149	80	1,252		45	124
Social Sciences	69		1,182	188	1,551		160	

Headline Faculty & department table. Level of study and mode of study

Faculty	Dept	Dept Code	01 - Postgraduate (research)		02 - Postgraduate (taught)		03 - First degree		04 - Other undergraduate	
			FT	PT	FT	PT	FT	PT	FT	PT
Medicine and Health Sciences	Health Sciences	HSC	7	19		122	505	17	41	84
	Norwich Medical School at the University of East Anglia	MED	47		135	80	225			78
Arts and Humanities	Art, Media and American Studies	AMA	12	6	74	5	190			29
	Arts and Humanities	HUM			13		167			
	History	HIS	7	5	38	11	156			14
	Literature, Drama and Creative Writing	LDC	15		94	30	275			61
	Politics, Philosophy, Language and Communication Studies	PPL	6	6	145	10	340			69
Science	Biological Sciences	BIO	53		59		311			21
	Chemistry	CHE	9		5		109			
	Computing Sciences	CMP	6		34	7	256			6
	Engineering	ENG					65			
	Environmental Sciences	ENV	18		40		197			13
	Mathematics	MTH	11				72			
	Natural Sciences	NAT					19			
	Pharmacy	PHA	7		8	64	177			124
Physics	PHY					46				
Social Sciences	Economics	ECO	8		125		273			34
	Education and Lifelong Learning	EDU	16		285	53	131			10
	International Development	DEV	9		133		172			35
	Law	LAW	5		92		212			53
	Norwich Business School	NBS	13		486	24	471			7
	Psychology	PSY	13		36		268			21
	Social Work	SWK	5		24	102	24			

Note: Student populations of less than 5 are suppressed, therefore popl. may not add up to the overall totals for data protection reasons.

2. Gender distribution - Headcount of active student population:

New Starter
Returner

Headline Institutional table. Level of study, all mode of study

Intended Hesa Qualification Level 5 Way	FEMALE		MALE	
01 - Postgraduate (research)	668	56%	520	44%
02 - Postgraduate (taught)	1,886	65%	1,026	35%
03 - First degree	7,006	57%	5,350	43%
04 - Other undergraduate	708	75%	235	25%
Grand Total	10,268	59%	7,131	41%

Headline Faculty table. Level of study, all mode of study

Faculty	01 - Postgraduate (research)		02 - Postgraduate (taught)		03 - First degree		04 - Other undergraduate									
	FEMALE	MALE	FEMALE	MALE	FEMALE	MALE	FEMALE	MALE								
Medicine and Health Sciences	67%	33%	143	70	72%	28%	377	148	78%	22%	1,787	506	82%	18%	275	60
Arts and Humanities	56%	44%	121	97	66%	34%	319	164	59%	41%	1,750	1,212	72%	28%	123	49
Science	49%	51%	233	245	58%	42%	158	114	42%	58%	1,365	1,847	73%	27%	202	73
Social Sciences	61%	39%	171	108	63%	37%	1,032	600	54%	46%	2,104	1,785	67%	33%	108	53
Grand Total	56%	44%	668	520	65%	35%	1,886	1,026	57%	43%	7,006	5,350	75%	25%	708	235

Headline Faculty & department table. Level of study, all mode of study

Faculty	Dept Code	01 - Postgraduate (research)		02 - Postgraduate (taught)		03 - First degree		04 - Other undergraduate									
		FEMALE	MALE	FEMALE	MALE	FEMALE	MALE	FEMALE	MALE								
Medicine and Health Sciences	HSC	78%	22%	38	11	76%	24%	203	64	88%	12%	1,196	167	81%	19%	150	35
	MED	64%	36%	105	59	67%	33%	174	84	64%	36%	591	339	83%	17%	125	25
Arts and Humanities	AMA	62%	38%	41	25	68%	32%	63	30	67%	33%	391	192	76%	24%	22	7
	HIS	43%	57%	22	29	51%	49%	28	27	46%	54%	271	316	79%	21%	11	
	HUM					89%	11%	16		44%	56%	74	95				
	LDC	63%	38%	40	24	68%	32%	104	50	73%	27%	532	192	69%	31%	42	19
Science	PPL	49%	51%	18	19	66%	34%	108	55	54%	46%	482	417	71%	29%	48	20
	BIO	51%	49%	112	106	61%	39%	42	27	57%	43%	459	352	68%	32%	15	7
	CHE	57%	43%	21	16	17%	83%		5	40%	60%	98	144	100%			
	CMP	35%	65%	17	31	24%	76%	11	35	14%	86%	93	551	17%	83%		5
	ENG						100%			14%	86%	17	101				
	ENV	54%	46%	56	47	60%	40%	29	19	53%	47%	274	247	54%	46%	7	6
	MTH	25%	75%	7	21					30%	70%	75	176	100%			
	NAT									60%	40%	33	22				
Social Sciences	PHA	45%	55%	20	24	75%	25%	75	25	61%	39%	295	191	76%	24%	175	55
	PHY									25%	75%	21	63				
	CCE					100%											
	DEV	71%	29%	30	12	64%	36%	93	52	68%	32%	296	138	78%	22%	28	8
	ECO	54%	46%	15	13	47%	53%	59	67	27%	73%	183	500	50%	50%	17	17
	EDU	73%	27%	59	22	65%	35%	276	149	67%	33%	228	112	70%	30%	7	
	LAW	41%	59%	9	13	54%	46%	52	44	65%	35%	338	183	68%	32%	36	17
Grand Total	56%	44%	668	520	65%	35%	1,886	1,026	57%	43%	7,006	5,350	75%	25%	708	235	

Note: Student populations of less than 5 are suppressed, therefore popl. may not add up to the overall totals for data protection reasons.

2. Gender distribution - Headcount of active student population:

New Starter

Headline Institutional table. Level of study, all mode of study

Intended Hesa Qualification Level 5 Way	FEMALE		MALE	
01 - Postgraduate (research)	174	55%	144	45%
02 - Postgraduate (taught)	1,509	64%	843	36%
03 - First degree	2,553	55%	2,124	45%
04 - Other undergraduate	522	74%	182	26%
Grand Total	4,758	59%	3,293	41%

Headline Faculty table. Level of study, all mode of study

Faculty	01 - Postgraduate (research)		02 - Postgraduate (taught)		03 - First degree		04 - Other undergraduate									
	FEMALE	MALE	FEMALE	MALE	FEMALE	MALE	FEMALE	MALE								
Medicine and Health Sciences	61%	39%	46	30	72%	28%	243	96	80%	20%	594	153	84%	16%	172	32
Arts and Humanities	51%	49%	30	29	65%	35%	271	147	57%	43%	638	489	71%	29%	122	49
Science	48%	52%	52	57	58%	42%	131	96	42%	58%	522	730	72%	28%	121	48
Social Sciences	62%	38%	46	28	63%	37%	864	504	52%	48%	799	752	67%	33%	107	53
Grand Total	55%	45%	174	144	64%	36%	1,509	843	55%	45%	2,553	2,124	74%	26%	522	182

Headline Faculty & department table. Level of study, all mode of study

Faculty	Dept Code	01 - Postgraduate (research)		02 - Postgraduate (taught)		03 - First degree		04 - Other undergraduate									
		FEMALE	MALE	FEMALE	MALE	FEMALE	MALE	FEMALE	MALE								
Medicine and Health Sciences	HSC	69%	31%	18	8	77%	23%	96	29	87%	13%	456	66	82%	18%	102	23
	MED	56%	44%	28	22	69%	31%	147	67	61%	39%	138	87	89%	11%	70	9
Arts and Humanities	AMA	47%	53%	8	9	67%	33%	52	26	63%	37%	119	71	76%	24%	22	7
	HIS	25%	75%		9	49%	51%	24	25	45%	55%	70	86	79%	21%	11	
	HUM					87%	13%	13		44%	56%	74	93				
	LDC	72%	28%	13	5	66%	34%	80	41	75%	25%	205	69	68%	32%	41	19
	PPL	50%	50%	6	6	66%	34%	102	53	50%	50%	170	170	71%	29%	48	20
Science	BIO	49%	51%	26	27	63%	37%	39	23	56%	44%	174	137	67%	33%	14	7
	CHE	67%	33%	6		20%	80%			40%	60%	44	65	100%			
	CMP	38%	63%		5	23%	78%	9	31	15%	85%	39	217	17%	83%		5
	ENG						100%			12%	88%	8	57				
	ENV	60%	40%	12	8	62%	38%	28	17	49%	51%	97	100	54%	46%	7	6
	MTH	18%	82%		9					36%	64%	26	46	100%			
	NAT									63%	37%	12	7				
	PHA	38%	63%		5	75%	25%	54	18	63%	37%	111	66	76%	24%	95	30
Social Sciences	PHY									24%	76%	11	35				
	CCE					100%											
	DEV	67%	33%	6		65%	35%	88	48	60%	40%	103	69	77%	23%	27	8
	ECO	38%	63%		5	46%	54%	58	67	27%	73%	73	200	50%	50%	17	17
	EDU	74%	26%	14	5	69%	31%	233	105	61%	39%	80	51	70%	30%	7	
	LAW	20%	80%			53%	47%	49	44	59%	41%	126	86	68%	32%	36	17
	NBS	50%	50%	7	7	59%	41%	298	211	38%	62%	178	293	57%	43%		
	PSY	77%	23%	10		85%	15%	34	6	81%	19%	217	51	76%	24%	16	5
SWK	83%	17%	5		82%	18%	103	23	92%	8%	22						
Grand Total	55%	45%	174	144	64%	36%	1,509	843	55%	45%	2,553	2,124	74%	26%	522	182	

Note: Student populations of less than 5 are suppressed, therefore popl. may not add up to the overall totals for data protection reasons.

3. Age band of active student population

New Starter
Returner

Headline Institutional table. Mode of study

Age Band At Entry	FT		PT	
16-20	11,135	71%	30	2%
21-24	2,617	17%	248	14%
25-34	1,428	9%	668	37%
35-44	302	2%	457	26%
45-54	119	1%	276	15%
55-64	34	0%	88	5%
65+	5	0%	22	1%

Headline Level of study. Mode of study

Age Band At Entry	01 - Postgraduate (research)		02 - Postgraduate (taught)				03 - First degree				04 - Other undergraduate					
	FT	PT	FT	PT	FT	PT	FT	PT	FT	PT	FT	PT				
16-20	0%		5	0%			10,913	89%	6	6%	215	49%	24	5%		
21-24	372	38%	12	6%	1,259	65%	118	12%	820	7%	5	5%	166	37%	113	22%
25-34	472	48%	58	28%	524	27%	399	40%	391	3%	32	34%	41	9%	179	36%
35-44	94	10%	65	32%	99	5%	268	27%	93	1%	30	32%	16	4%	94	19%
45-54	31	3%	35	17%	38	2%	154	16%	45	0%	15	16%	5	1%	72	14%
55-64	11	1%	27	13%	14	1%	40	4%	9	0%	1	1%			20	4%
65+	0%		9	4%	0%		7	1%	0%		4%		0%			

Headline Faculty table. Level of study, mode of study

Faculty	Age Band..	01 - Postgraduate (research)		02 - Postgraduate (taught)				03 - First degree				04 - Other undergraduate							
		FT	PT	FT	PT	FT	PT	FT	PT	FT	PT	FT	PT						
Medicine and Health Sciences	16-20							1,710	77%	5	6%	14	22%	10	4%				
	21-24	48	27%	3%		89	49%	9	3%	240	11%	5	6%	10	16%	20	7%		
	25-34	107	61%	10	26%	63	34%	169	49%	185	8%	30	37%	21	33%	108	40%		
	35-44	15	9%	18	47%	18	10%	112	33%	57	3%	29	35%	14	22%	57	21%		
	45-54	2%		5	13%	12	7%	49	14%	19	1%	13	16%	6%		59	22%		
	55-64	1%		11%		1%		1%						17		6%			
	65+													1%					
Arts and Humanities	16-20							2,708	91%					102	59%				
	21-24	31	24%	8 9%		256	67%	21	19%	160	5%					64	37%		
	25-34	62	48%	26	29%	97	25%	26	24%	56	2%					7	4%		
	35-44	19	15%	19	21%	15	4%	16	15%	15	1%					1%			
	45-54	10	8%	14	16%	7	2%	19	17%	17	1%	29%							
	55-64	7	5%	13	15%	7	2%	21	19%	5	0%	14%							
	65+	1%		9	10%	0%		6	6%	0%		57%							
Science	16-20	0%						2,916	91%	25%		26	58%	14	6%				
	21-24	242	53%	8%		116	74%	52	44%	193	6%	15		33%	93	40%			
	25-34	184	41%	8	32%	31	20%	50	43%	82	3%	50%		9%	71	31%			
	35-44	23	5%	8	32%	8	5%	6	5%	14	0%	25%						37	16%
	45-54	0%		5	20%	1%		8	7%	0%				13		6%			
	55-64	0%		8%		1%		1%		0%								1%	
	65+	1%																	
Social Sciences	16-20			5 0%				3,579	92%					73	45%				
	21-24	51	23%	2%		798	66%	36	9%	227	6%					77	48%		
	25-34	119	53%	14	26%	333	27%	154	37%	68	2%					9	6%		
	35-44	37	16%	20	37%	58	5%	134	32%	7	0%					1%			
	45-54	15	7%	11	20%	17	1%	78	19%	5	0%					1%			
	55-64	1%		8	15%	6	0%	14	3%	0%									
	65+	1%						0%											

Note: Student populations of less than 5 are suppressed, therefore popl. may not add up to the overall totals for data protection reasons.

3. Age band of active student population New Starter

Headline Institutional table. Mode of study

Age Band At Entry	FT		PT	
16-20	4,338	60%		0%
21-24	1,782	25%	147	17%
25-34	812	11%	339	38%
35-44	166	2%	212	24%
45-54	61	1%	134	15%
55-64	21	0%	41	5%
65+		0%	8	1%

Headline Level of study. Mode of study

Age Band At Entry	01 - Postgraduate (research)		02 - Postgraduate (taught)		03 - First degree		04 - Other undergraduate										
	FT	PT	FT	PT	FT	PT	FT	PT									
16-20			5	0%		4,124	88%	209	50%		1%						
21-24	95	36%	6	6%	1,207	66%	62	12%	322	7%	6%	158	38%	81	28%		
25-34	133	50%	13	25%	482	26%	216	41%	161	3%	6	35%	36	9%	104	36%	
35-44	27	10%	20	38%	91	5%	134	25%	33	1%	7	41%	15	4%	51	18%	
45-54	7	3%	8	15%	35	2%	86	16%	16	0%		18%		1%	37	13%	
55-64		1%	7	13%	12	1%	26	5%	5	0%					8	3%	
65+		0%		4%		0%	5	1%									0%

Headline Faculty table. Level of study, mode of study

Faculty	Age Band ..	01 - Postgraduate (research)		02 - Postgraduate (taught)		03 - First degree		04 - Other undergraduate									
		FT	PT	FT	PT	FT	PT	FT	PT								
Medicine and Health Sciences	16-20					552	76%		8	19%		2%					
	21-24	14	26%		59	43%	7	3%	80	11%	6%	9%	14	9%			
	25-34	36	67%	6	27%	50	36%	101	50%	72	10%	6	35%	16	37%	71	44%
	35-44		7%	10	45%	16	12%	59	29%	19	3%	7	41%	13	30%	34	21%
	45-54				9%	12	9%	32	16%	7	1%		18%		5%	31	19%
	55-64				18%		1%	1%								7	4%
	65+																
Arts and Humanities	16-20							1,016	90%				102	59%			
	21-24	10	25%		15%	248	68%	10	17%	64	6%		63	36%			
	25-34	16	40%	5	25%	90	25%	12	20%	33	3%		7	4%			
	35-44	6	15%		15%	13	4%	7	12%	6	1%			1%			
	45-54		10%		20%	6	2%	13	22%	7	1%						
	55-64		8%		15%	6	2%	12	20%		0%						
	65+		3%		10%		0%	5	8%								
Science	16-20							1,139	91%				26	58%			
	21-24	54	52%			111	74%	32	40%	74	6%		15	33%	67	54%	
	25-34	46	44%		17%	28	19%	35	44%	33	3%		9%	33	27%		
	35-44		4%		50%	8	5%	6	8%		0%				17	14%	
	45-54				33%		1%	6	8%		0%				6	5%	
	55-64							1%			0%						1%
Social Sciences	16-20				5	0%			1,417	91%			73	46%			
	21-24	17	25%			789	67%	13	7%	104	7%		76	48%			
	25-34	35	51%		20%	314	27%	68	36%	23	1%		9	6%			
	35-44	13	19%		80%	54	5%	62	33%		0%			1%			
	45-54		4%			15	1%	35	19%		0%			1%			
	55-64		1%			5	0%	10	5%		0%						

Note: Student populations of less than 5 are suppressed, therefore popl. may not add up to the overall totals for data protection reasons.

4. Fee distribution. Headcount and percentage of active student population

Headline Institutional table - Total Population. Level of study, all mode of study

Intended Hesa Qualification Level 5 Way	HOME	EU	International	Exchange	Visitor	Other	Grand Total
01 - Postgraduate (research)	729	176	257			28	1,191
	61%	15%	22%		0%	2%	100%
02 - Postgraduate (taught)	1,802	113	1,007				2,926
	62%	4%	34%		0%	0%	100%
03 - First degree	10,343	760	1,253			9	12,365
	84%	6%	10%			0%	100%
04 - Other undergraduate	582	8	25	282	50		947
	61%	1%	3%	30%	5%		100%
Grand Total	13,456	1,057	2,542	282	53	39	17,429
	77%	6%	15%	2%	0%	0%	100%

Headline Faculty table - Total Population. Level of study, all mode of study

Faculty	Intended Hesa Qualification Level 5 Way	HOME	EU	International	Exchange	Visitor	Other	Grand Total
Medicine and Health Sciences	01 - Postgraduate (research)	147	36	27				213
		69%	17%	13%			1%	100%
	02 - Postgraduate (taught)	428	20	77				526
		81%	4%	15%		0%		100%
	03 - First degree	2,082	83	128				2,293
		91%	4%	6%				100%
	04 - Other undergraduate	332						336
		99%	1%					100%
Arts and Humanities	01 - Postgraduate (research)	170	16	27			6	219
		78%	7%	12%			3%	100%
	02 - Postgraduate (taught)	294	26	171				492
		60%	5%	35%			0%	100%
	03 - First degree	2,623	176	164			6	2,969
		88%	6%	6%			0%	100%
	04 - Other undergraduate				150	24		174
					86%	14%		100%
Science	01 - Postgraduate (research)	275	87	106			10	479
		57%	18%	22%		0%	2%	100%
	02 - Postgraduate (taught)	212	16	45				274
		77%	6%	16%			0%	100%
	03 - First degree	2,723	244	247				3,214
		85%	8%	8%				100%
	04 - Other undergraduate	231			31	8		276
		84%	1%	1%	11%	3%		100%
Social Sciences	01 - Postgraduate (research)	137	37	97			9	280
		49%	13%	35%			3%	100%
	02 - Postgraduate (taught)	868	51	714				1,634
		53%	3%	44%		0%		100%
	03 - First degree	2,915	257	714				3,889
		75%	7%	18%			0%	100%
	04 - Other undergraduate	19		22	101	18		161
		12%	1%	14%	63%	11%		100%
Grand Total	13,456	1,057	2,542	282	53	39	17,429	
	77%	6%	15%	2%	0%	0%	100%	

Note: Student populations of less than 5 are suppressed, therefore popl. may not add up to the overall totals for data protection reasons.

5. Location - Postcode region - headcount and distribution of UK Domiciled, home fee paying active student population

Headline Institutional table. Mode of study

Course Full Or Part Time	Postcode Region		
FT	East Midlands	694	6%
	East of England	6,138	53%
	London	1,908	16%
	North East	110	1%
	North West	218	2%
	South East	1,768	15%
	South West	366	3%
	West Midlands	265	2%
	Yorkshire and The Humber	219	2%
PT	East of England	1,313	86%
	London	100	7%
	South East	48	3%

Headline Level of study table. Mode of study

Course Full Or Part Time	Postcode Region	01 - Postgraduate (research)		02 - Postgraduate (taught)		03 - First degree		04 - Other undergraduate	
FT	East Midlands	20	4%	28	3%	641	6%	5	6%
	East of England	349	64%	677	74%	5,042	50%	70	85%
	London	49	9%	63	7%	1,793	18%		4%
	North East	10	2%		0%	96	1%		
	North West	15	3%	21	2%	182	2%		
	South East	45	8%	66	7%	1,655	16%		2%
	South West	19	3%	23	3%	323	3%		1%
	West Midlands	18	3%	12	1%	235	2%		
	Yorkshire and The Humber	20	4%	15	2%	183	2%		1%
PT	East Midlands		1%	10	1%		1%	8	2%
	East of England	145	79%	727	89%	85	98%	356	82%
	London	20	11%	40	5%			40	9%
	North East				0%				
	North West		1%		0%				0%
	South East	6	3%	19	2%			23	5%
	South West		1%	8	1%				
	West Midlands		2%	5	1%		1%		1%
	Yorkshire and The Humber		1%	5	1%				0%

Note: Student populations of less than 5 are suppressed, therefore popl. may not add up to the overall totals for data protection reasons.

5. Region - East of England - headcount and distribution of UK Domiciled, home fee paying active student population

Headline Institutional table. Mode of study

Course Full Or Part Time	Postcode Nuts3		
FT	Bedford	60	1%
	Cambridgeshire CC	484	8%
	Central Bedfordshire	95	2%
	Essex CC	971	16%
	Hertfordshire	551	9%
	Luton	61	1%
	Norfolk	2,563	42%
	Peterborough	89	1%
	Southend-on-Sea	79	1%
	Suffolk	1,127	18%
	Thurrock	58	1%
PT	Cambridgeshire CC	86	7%
	Essex CC	141	11%
	Hertfordshire	45	3%
	Luton	19	1%
	Norfolk	731	56%
	Peterborough	8	1%
	Suffolk	250	19%

Headline Level of study table. Mode of study

Course Full Or Part Time	Postcode Nuts3	01 - Postgraduate (research)		02 - Postgraduate (taught)		03 - First degree		04 - Other undergraduate	
FT	Bedford			8	1%	51	1%		1%
	Cambridgeshire CC	25	7%	50	7%	408	8%		1%
	Central Bedfordshire	6	2%	9	1%	80	2%		
	Essex CC	17	5%	50	7%	901	18%		4%
	Hertfordshire	13	4%	39	6%	499	10%		
	Luton		1%		1%	55	1%		
	Norfolk	220	63%	396	58%	1,905	38%	42	60%
	Peterborough		0%	6	1%	81	2%		1%
	Southend-on-Sea			5	1%	74	1%		
	Suffolk	64	18%	108	16%	933	19%	22	31%
	Thurrock		0%		0%	55	1%		
PT	Bedford		1%					5	1%
	Cambridgeshire CC	10	7%	44	6%		5%	28	8%
	Central Bedfordshire				0%			7	2%
	Essex CC	8	6%	73	10%			60	17%
	Hertfordshire		2%	8	1%			34	10%
	Luton				0%			17	5%
	Norfolk	81	56%	440	61%	73	86%	137	38%
	Peterborough				0%			5	1%
	Southend-on-Sea			8	1%				1%
	Suffolk	42	29%	142	20%	8	9%	58	16%
	Thurrock				1%				1%

Note: Student populations of less than 5 are suppressed, therefore popl. may not add up to the overall totals for data protection reasons.

6. International fee status headcount & distribution of full time active student population

New Starter
Returner

Headline Institutional table. Level of study

Intended Hesa Qualification Level 5 Way	2019/0
01 - Postgraduate (research)	256
02 - Postgraduate (taught)	927
03 - First degree	1,253
04 - Other undergraduate	24

Headline Faculty table. Level of study

Faculty	01 - Postgraduate (research)		02 - Postgraduate (taught)		03 - First degree		04 - Other undergraduate	
	Count	%	Count	%	Count	%	Count	%
Medicine and Health Sciences	27	11%	13	1%	128	10%		
Arts and Humanities	27	11%	167	18%	164	13%		
Science	106	41%	42	5%	247	20%		8%
Social Sciences	96	38%	705	76%	714	57%	22	92%

Headline Faculty & Department table. Level of study

Faculty	Dept	Dept Code	01 - Postgraduate (research)		02 - Postgraduate (taught)		03 - First degree		04 - Other undergraduate	
			Count	%	Count	%	Count	%	Count	%
Medicine and Health Sciences	Health Sciences	HSC	8	3%	5	1%	63	5%		
	Norwich Medical School at the University of East Anglia	MED	19	7%	8	1%	65	5%		
Arts and Humanities	Art, Media and American Studies	AMA	10	4%	40	4%	81	6%		
	Arts and Humanities	HUM			7	1%				
	History	HIS		1%				0%		
	Literature, Drama and Creative Writing	LDC	7	3%	31	3%	27	2%		
	Politics, Philosophy, Language and Communication Studies	PPL	8	3%	89	10%	52	4%		
Science	Biological Sciences	BIO	32	13%	12	1%	35	3%		8%
	Chemistry	CHE	13	5%		0%	7	1%		
	Computing Sciences	CMP	22	9%	10	1%	95	8%		
	Engineering	ENG				0%	9	1%		
	Environmental Sciences	ENV	14	5%	11	1%	30	2%		
	Mathematics	MTH	11	4%			6	0%		
	Pharmacy	PHA	14	5%	5	1%	63	5%		
	Physics	PHY						0%		
Social Sciences	Economics	ECO	19	7%	97	10%	155	12%		4%
	Education and Lifelong Learning	EDU	12	5%	33	4%	12	1%		
	International Development	DEV	20	8%	82	9%	27	2%	13	54%
	Law	LAW	10	4%	72	8%	86	7%		
	Norwich Business School	NBS	32	13%	420	45%	353	28%		
	Psychology	PSY		1%		0%	81	6%	8	33%

Note: Student populations of less than 5 are suppressed, therefore popl. may not add up to the overall totals for data protection reasons.

6. International fee status headcount & distribution of full time active student population

New Starter

Headline Institutional table. Level of study

Intended Hesa Qualification Level 5 Way	2019/0
01 - Postgraduate (research)	61
02 - Postgraduate (taught)	917
03 - First degree	486
04 - Other undergraduate	24

Headline Faculty table. Level of study

Faculty	01 - Postgraduate (research)		02 - Postgraduate (taught)		03 - First degree		04 - Other undergraduate	
	Count	%	Count	%	Count	%	Count	%
Medicine and Health Sciences	9	15%	8	1%	40	8%		
Arts and Humanities	7	11%	167	18%	58	12%		
Science	23	38%	40	4%	90	19%		8%
Social Sciences	22	36%	702	77%	298	61%	22	92%

Headline Faculty & Department table. Level of study

Faculty	Dept	Dept Code	01 - Postgraduate (research)		02 - Postgraduate (taught)		03 - First degree		04 - Other undergraduate	
			Count	%	Count	%	Count	%	Count	%
Medicine and Health Sciences	Health Sciences	HSC	7				27	6%		
	Norwich Medical School at the University of East Anglia	MED	5	8%	8	1%	13	3%		
Arts and Humanities	Art, Media and American Studies	AMA	5	5%	40	4%	26	5%		
	Arts and Humanities	HUM			7	1%				
	History	HIS						0%		
	Literature, Drama and Creative Writing	LDC	5	5%	31	3%	13	3%		
	Politics, Philosophy, Language and Communication Studies	PPL	2	2%	89	10%	18	4%		
Science	Biological Sciences	BIO	7	7%	11	1%	16	3%		8%
	Chemistry	CHE	7	7%		0%		1%		
	Computing Sciences	CMP	5	5%	10	1%	37	8%		
	Engineering	ENG				0%		1%		
	Environmental Sciences	ENV	5	8%	10	1%	15	3%		
	Mathematics	MTH	5	8%						
	Pharmacy	PHA	3	3%	5	1%	14	3%		
	Physics	PHY						0%		
Social Sciences	Economics	ECO	5	5%	96	10%	67	14%		4%
	Education and Lifelong Learning	EDU	7	7%	32	3%		1%		
	International Development	DEV	7	7%	81	9%	8	2%	13	54%
	Law	LAW	5	5%	72	8%	31	6%		
	Norwich Business School	NBS	8	13%	420	46%	154	32%		
	Psychology	PSY				0%	34	7%	8	33%

Note: Student populations of less than 5 are suppressed, therefore popl. may not add up to the overall totals for data protection reasons.

6. Top 10 Domiciles: International fee status full time active student population

Headline Institutional table. Country of domicile

Intended Hesa Qualification Level 5 Way	Rank of Student_Count	Domicile	Student_Count_Anony..	% of Total Student_Count along Pane (Down)
01 - Postgraduate (research)	1	Saudi Arabia	65	26%
	2	China	45	18%
	3	India	14	6%
	4	USA	13	5%
	5	Nigeria	11	4%
	6	Jordan	7	3%
	7	Canada	6	2%
		Hong Kong (Special Administrative Region of China)	6	2%
		Thailand	6	2%
		Malaysia	6	2%
	Mexico	6	2%	
02 - Postgraduate (taught)	1	China	479	52%
	2	Thailand	65	7%
	3	Vietnam	56	6%
	4	India	49	5%
	5	USA	30	3%
	6	Japan	29	3%
	7	Nigeria	21	2%
	8	Taiwan, Republic of China (ROC)	19	2%
	9	Hong Kong (Special Administrative Region of China)	15	2%
	10	Saudi Arabia	14	2%
03 - First degree	1	China	405	33%
	2	Hong Kong (Special Administrative Region of China)	240	20%
	3	Malaysia	103	8%
	4	Vietnam	32	3%
	5	India	30	2%
	6	Singapore	26	2%
	7	Nigeria	24	2%
		Mauritius	24	2%
	9	Thailand	21	2%
	10	Pakistan	20	2%
	Brunei	20	2%	
04 - Other undergraduate	1	China	7	29%
	2	Japan	5	21%
	3	Hong Kong (Special Administrative Region of China)		17%
	4	USA		4%
		Singapore		4%
		Vietnam		4%
		Malaysia		4%
		India		4%
		Taiwan, Republic of China (ROC)		4%
		Oman		4%
	United Arab Emirates		4%	

Note: Student populations of less than 5 are suppressed, therefore popl. may not add up to the overall totals for data protection reasons.

7. Annual snapshot of currently enrolled active student population

(Dec cal wk-49, APR Cal wk-14)

Snapshot Month

APR

DEC

Institutional, level of study

Intended Hesa Qualification Level 5 Way	Academic Year					% Difference in Student Count from the Previous along Table (Across)				
	Student Count					2015/6	2016/7	2017/8	2018/9	2019/0
	2015/6	2016/7	2017/8	2018/9	2019/0	2015/6	2016/7	2017/8	2018/9	2019/0
01 - Postgraduate (research)	1,105	1,144	1,156	1,339	1,145	▲3.5%	▲1.0%	▲15.8%	▼-14.5%	
02 - Postgraduate (taught)	2,442	2,665	2,663	2,650	2,656	▲9.1%	▼-0.1%	▼-0.5%	▲0.2%	
03 - First degree	10,311	11,093	11,832	11,997	12,283	▲7.6%	▲6.7%	▲1.4%	▲2.4%	
04 - Other undergraduate	452	546	550	696	809	▲20.8%	▲0.7%	▲26.5%	▲16.2%	
Grand Total	14,310	15,448	16,201	16,682	16,893	▲8.0%	▲4.9%	▲3.0%	▲1.3%	

Faculty, level of study

Faculty Code	Intended Hesa Qualification Level 5 ..	Academic Year					% Difference in Student Count from the Previous along Table (Across)				
		Student Count					2015/6	2016/7	2017/8	2018/9	2019/0
		2015/6	2016/7	2017/8	2018/9	2019/0	2015/6	2016/7	2017/8	2018/9	2019/0
FMH	01 - Postgraduate (research)	155	184	192	209	203	▲18.7%	▲4.3%	▲8.9%	▼-2.9%	
	02 - Postgraduate (taught)	205	245	331	257	392	▲19.5%	▲35.1%	▼-22.4%	▲52.5%	
	03 - First degree	2,018	2,039	2,115	2,103	2,271	▲1.0%	▲3.7%	▼-0.6%	▲8.0%	
	04 - Other undergraduate	152	228	167	238	288	▲50.0%	▼-26.8%	▲42.5%	▲21.0%	
	Total	2,530	2,696	2,805	2,807	3,154	▲6.6%	▲4.0%	▲0.1%	▲12.4%	
HUM	01 - Postgraduate (research)	263	256	236	258	213	▼-2.7%	▼-7.8%	▲9.3%	▼-17.4%	
	02 - Postgraduate (taught)	473	494	492	521	494	▲4.4%	▼-0.4%	▲5.9%	▼-5.2%	
	03 - First degree	2,816	3,121	3,285	3,132	2,985	▲10.8%	▲5.3%	▼-4.7%	▼-4.7%	
	04 - Other undergraduate	155	148	138	137	109	▼-4.5%	▼-6.8%	▼-0.7%	▼-20.4%	
	Total	3,707	4,019	4,151	4,048	3,801	▲8.4%	▲3.3%	▼-2.5%	▼-6.1%	
SCI	01 - Postgraduate (research)	452	456	484	554	455	▲0.9%	▲6.1%	▲14.5%	▼-17.9%	
	02 - Postgraduate (taught)	152	193	225	212	233	▲27.0%	▲16.6%	▼-5.8%	▲9.9%	
	03 - First degree	2,657	2,718	2,816	3,068	3,136	▲2.3%	▲3.6%	▲8.9%	▲2.2%	
	04 - Other undergraduate	55	40	126	209	280	▼-27.3%	▲215.0%	▲65.9%	▲34.0%	
	Total	3,316	3,407	3,651	4,043	4,104	▲2.7%	▲7.2%	▲10.7%	▲1.5%	
SSF	01 - Postgraduate (research)	235	248	244	318	274	▲5.5%	▼-1.6%	▲30.3%	▼-13.8%	
	02 - Postgraduate (taught)	1,612	1,733	1,615	1,660	1,537	▲7.5%	▼-6.8%	▲2.8%	▼-7.4%	
	03 - First degree	2,820	3,215	3,616	3,694	3,891	▲14.0%	▲12.5%	▲2.2%	▲5.3%	
	04 - Other undergraduate	90	130	119	112	132	▲44.4%	▼-8.5%	▼-5.9%	▲17.9%	
	Total	4,757	5,326	5,594	5,784	5,834	▲12.0%	▲5.0%	▲3.4%	▲0.9%	
Grand Total	14,310	15,448	16,201	16,682	16,893	▲8.0%	▲4.9%	▲3.0%	▲1.3%		

7. Annual snapshot of currently enrolled active student population

Snapshot Month
 APR
 DEC

Dept by year

		Intended Hesa Qualification Level 5 Way / Academic Year																				
		01 - Postgraduate (research)					02 - Postgraduate (taught)					03 - First degree					04 - Other undergraduate					
Student Count	Facult.. Dept Code	2015/6	2016/7	2017/8	2018/9	2019/0	2015/6	2016/7	2017/8	2018/9	2019/0	2015/6	2016/7	2017/8	2018/9	2019/0	2015/6	2016/7	2017/8	2018/9	2019/0	
Student Count	FMH HSC	22	23	22	29	47	124	141	112	135	176	1,190	1,217	1,269	1,231	1,342	152	169	164	236	142	
		133	161	170	180	156	81	104	219	122	216	828	822	846	872	929	59				146	
	HUM	AMA	103	90	70	72	66	129	117	101	128	94	714	759	747	675	584	73	30	34	32	20
		HIS	47	53	56	58	48	33	44	35	60	56	458	547	650	659	589	9	14	8	5	7
		HUM						6	10	11	21	21	137	165	166	168	177					
		LDC	70	70	71	83	62	109	147	138	161	157	733	804	801	748	731	14	37	48	37	32
		MUS																				
		PPL	43	42	39	45	37	196	176	207	151	166	774	846	921	882	904	59	67	48	63	50
	SCI	BIO	182	208	222	267	209	45	71	75	53	66	612	653	703	785	814	31	23	34	22	20
		CHE	55	46	35	42	34	5	10		6	6	271	236	226	259	241					
		CMP	42	36	44	51	48	38	42	52	58	46	488	493	534	609	647			5	5	
		ENG						11	14	8	8		31	62	75	91	120					
		ENV	105	93	103	113	95	48	44	62	54	48	470	498	545	534	525	12	10	8	12	7
		MTH	28	29	29	29	28						275	255	263	284	251					
		NAT											83	85	75	70	55					
		PHA	40	44	51	52	41		12	26	33	64	427	436	395	436	483	5		78	165	250
	SSF	DEV	60	51	44	46	42	122	173	150	169	147	309	351	372	378	434	10	17	11	9	31
		ECO	29	23	26	33	28	162	121	107	166	126	623	715	791	729	684	6	7	22	26	23
		EDU	62	64	54	96	82	538	504	499	379	426	186	209	263	322	342			6		7
		LAW	22	24	23	30	22	98	99	82	83	96	462	521	541	491	514	59	73	59	49	42
NBS		30	47	57	67	60	450	487	505	567	532	770	852	962	1,043	1,133			5		7	
PSY		24	32	32	37	27	33	37	41	41	45	411	504	614	654	715	9	27	16	21	22	
SWK		8	7	8	9	13	209	312	231	255	165	59	63	73	77	69						
% Difference in Student Count from the Previous along Pane (Across)	FMH HSC	▲4.5%	▼-4.3%	▲31.8%	▲62.1%		▲13.7%	▼-20.6%	▲20.5%	▲30.4%		▲2.3%	▲4.3%	▼-3.0%	▲9.0%		▲11.2%	▼-3.0%	▲43.9%	▼-39.8%		
		▲21.1%	▲5.6%	▲5.9%	▼-13.3%		▲28.4%	▲110.6%	▼-44.3%	▲77.0%		▼-0.7%	▲2.9%	▲3.1%	▲6.5%						#####	
	HUM	AMA	▼-12.6%	▼-22.2%	▲2.9%	▼-8.3%		▼-9.3%	▼-13.7%	▲26.7%	▼-26.6%		▲6.3%	▼-1.6%	▼-9.6%	▼-13.5%		▼-58.9%	▲13.3%	▼-5.9%	▼-37.5%	
		HIS	▲12.8%	▲5.7%	▲3.6%	▼-17.2%		▲33.3%	▼-20.5%	▲71.4%	▼-6.7%		▲19.4%	▲18.8%	▲1.4%	▼-10.6%		▲55.6%	▼-42.9%	▼-37.5%	▲40.0%	
		HUM						▲66.7%	▲10.0%	▲90.9%	▲0.0%		▲20.4%	▲0.6%	▲1.2%	▲5.4%						
		HUM-LON																				
		LDC	▲0.0%	▲1.4%	▲16.9%	▼-25.3%		▲34.9%	▼-6.1%	▲16.7%	▼-2.5%		▲9.7%	▼-0.4%	▼-6.6%	▼-2.3%		▲164.3%	▲29.7%	▼-22.9%	▼-13.5%	
		MUS																				
	PPL	▼-2.3%	▼-7.1%	▲15.4%	▼-17.8%		▼-10.2%	▲17.6%	▼-27.1%	▲9.9%		▲9.3%	▲8.9%	▼-4.2%	▲2.5%		▲13.6%	▼-26.4%	▲31.3%	▼-20.6%		
	SCI	BIO	▲14.3%	▲6.7%	▲20.3%	▼-21.7%		▲57.8%	▲5.6%	▼-29.3%	▲24.5%		▲6.7%	▲7.7%	▲11.7%	▲3.7%		▼-25.8%	▲47.8%	▼-35.3%	▼-9.1%	
		CHE	▼-16.4%	▼-23.9%	▲20.0%	▼-19.0%		▲100.0%		▲200.0%	▲0.0%		▼-12.9%	▼-4.2%	▲14.6%	▼-6.9%						
		CMP	▼-14.3%	▲22.2%	▲15.9%	▼-5.9%		▲10.5%	▲23.8%	▲11.5%	▼-20.7%		▲1.0%	▲8.3%	▲14.0%	▲6.2%				▲25.0%	▲0.0%	
		ENG						▲27.3%	▼-42.9%	▲0.0%			▲100.0%	▲21.0%	▲21.3%	▲31.9%						
		ENV	▼-11.4%	▲10.8%	▲9.7%	▼-15.9%		▼-8.3%	▲40.9%	▼-12.9%	▼-11.1%		▲6.0%	▲9.4%	▼-2.0%	▼-1.7%		▼-16.7%	▼-20.0%	▲50.0%	▼-41.7%	
		MTH	▲3.6%	▲0.0%	▲0.0%	▼-3.4%							▼-7.3%	▲3.1%	▲8.0%	▼-11.6%						
		NAT											▲2.4%	▼-11.8%	▼-6.7%	▼-21.4%						
		PHA	▲10.0%	▲15.9%	▲2.0%	▼-21.2%		▲300.0%	▲116.7%	▲26.9%	▲93.9%		▲2.1%	▼-9.4%	▲10.4%	▲10.8%				#####	▲111.5%	▲51.5%
	SSF	DEV	▼-15.0%	▼-13.7%	▲4.5%	▼-8.7%		▲41.8%	▼-13.3%	▲12.7%	▼-13.0%		▲13.6%	▲6.0%	▲1.6%	▲14.8%		▲70.0%	▼-35.3%	▼-18.2%	▲244.4%	
		ECO	▼-20.7%	▲13.0%	▲26.9%	▼-15.2%		▼-25.3%	▼-11.6%	▲55.1%	▼-24.1%		▲14.8%	▲10.6%	▼-7.8%	▼-6.2%		▲16.7%	▲214.3%	▲18.2%	▼-11.5%	
		EDU	▲3.2%	▼-15.6%	▲77.8%	▼-14.6%		▼-6.3%	▼-1.0%	▼-24.0%	▲12.4%		▲12.4%	▲25.8%	▲22.4%	▲6.2%				▲200.0%	▲133.3%	
HIS																						
LAW		▲9.1%	▼-4.2%	▲30.4%	▼-26.7%		▲1.0%	▼-17.2%	▲1.2%	▲15.7%		▲12.8%	▲3.8%	▼-9.2%	▲4.7%		▲23.7%	▼-19.2%	▼-16.9%	▼-14.3%		
NBS		▲56.7%	▲21.3%	▲17.5%	▼-10.4%		▲8.2%	▲3.7%	▲12.3%	▼-6.2%		▲10.6%	▲12.9%	▲8.4%	▲8.6%				▲25.0%	▲75.0%		
NBS-LON																						
PSY		▲33.3%	▲0.0%	▲15.6%	▼-27.0%		▲12.1%	▲10.8%	▲0.0%	▲9.8%		▲22.6%	▲21.8%	▲6.5%	▲9.3%		▲200.0%	▼-40.7%	▲31.3%	▲4.8%		
SWK	▼-12.5%	▲14.3%	▲12.5%	▲44.4%		▲49.3%	▼-26.0%	▲10.4%	▼-35.3%		▲6.8%	▲15.9%	▲5.5%	▼-10.4%								

7. Annual snapshot of currently enrolled active student population

Intended Qual level
03 - First degree

Starter Or Returner
New Starter

Dept Code
All

Snapshot Month
 APR
 DEC

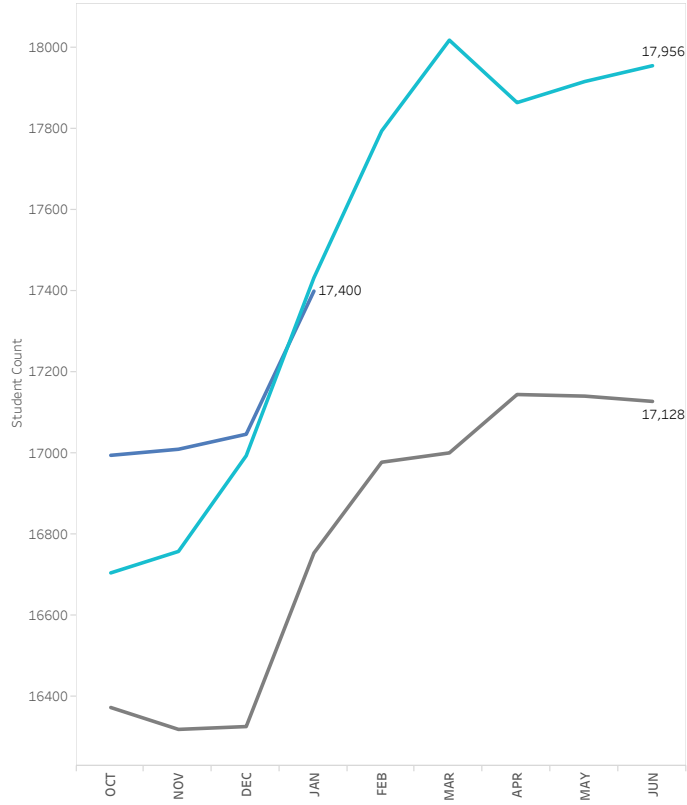
Intended Hesa Qualification Level 5 Way / Academic Year

Student Count	Faculty	Dept Code	Course Name	03 - First degree				
				2015/6	2016/7	2017/8	2018/9	2019/0
	FMH	HSC	SPEECH AND LANGUAGE THERAPY	21	24	33	41	40
			PHYSIOTHERAPY	29	28	34	54	52
			PARAMEDIC SCIENCE (BSc)	44	34	33	45	51
			OCCUPATIONAL THERAPY	45	43	47	41	49
			NURSING PRACTICE: NEONATAL NURSING (POST REG BSC)					
			NURSING PRACTICE: MENTAL HEALTH (POST REG BSC)					
			NURSING PRACTICE PRIMARY CARE (POST REG BSC)					
			NURSING PRACTICE (POST REG BSC)	36				
			MIDWIFERY (SHORTENED)	10	12	9		
			MIDWIFERY (BSC)	30	29	39	52	57
			MENTAL HEALTH NURSING (BSC)					46
			MENTAL HEALTH NURSING (BSC SEPT INTAKE)	37	35	51	40	
			LEARNING DISABILITIES NURSING (BSC)					15
			LEARNING DISABILITIES NURSING (BSC Sept Intake)	15	17	15	12	
			LEADING INNOVATION FOR CLINICAL PRACTITIONERS (BA)	5				
			ENHANCED PROFESSIONAL PRACTICE (BSc) PT					
			CHILDREN'S NURSING (BSC)					37
			CHILDREN'S NURSING (BSC Sept Intake)	25	25	28	37	
			ADULT NURSING (DEGREE APPRENTICESHIP) PT				15	9
			ADULT NURSING (BSC)					153
			ADULT NURSING (BSC SEPT INTAKE)	199	189	166	152	6
			ACUTE, CRITICAL AND EMERGENCY PRACTICE	10				
		MED	MEDICINE (MBBS) WITH A FOUNDATION YEAR	24	24	25	30	42
			MEDICINE (MBBS)	143	148	144	156	183
	HUM	AMA	MEDIA STUDIES	36	37	38	39	36
			HISTORY OF ART WITH GALLERY AND MUSEUM STUDIES		7	9	9	
			HISTORY OF ART AND LITERATURE	8	5			
			HISTORY OF ART (WITH A YEAR IN AUSTRALASIA OR NORTH AMERICA)	6	8			
			HISTORY OF ART (WITH A YEAR ABROAD)				5	
			HISTORY OF ART	16	15	14	16	13
			HISTORY AND HISTORY OF ART	6				
			HISTORY AND FILM STUDIES		6	7	8	5
			FILM STUDIES AND ENGLISH LITERATURE		23	16	16	19
			FILM STUDIES AND ART HISTORY					
			FILM AND TELEVISION STUDIES	43	51	45	43	46
			FILM AND HISTORY	14				
			FILM AND ENGLISH STUDIES	29				
			FILM AND AMERICAN STUDIES	14				
			ARCHAEOLOGY, ANTHROPOLOGY AND ART HISTORY (YR IN AUSTRALASIA OR NORTH AMERICA)					
			ARCHAEOLOGY, ANTHROPOLOGY AND ART HISTORY (WITH A YEAR ABROAD)					6
			ARCHAEOLOGY, ANTHROPOLOGY AND ART HISTORY	7	6	7	7	7
			AMERICAN STUDIES (3 YEAR)	9	12	5	6	5
			AMERICAN STUDIES	36	27	17	14	11
			AMERICAN LITERATURE WITH CREATIVE WRITING (3 YEAR)					
			AMERICAN LITERATURE WITH CREATIVE WRITING	26	27	13	5	18
			AMERICAN HISTORY (THREE YEARS)					
			AMERICAN HISTORY	15	18	11	7	11
			AMERICAN AND ENGLISH LITERATURE (3 YEAR)					
			AMERICAN AND ENGLISH LITERATURE	31	11	5	6	
		HIS	MODERN HISTORY	20	13	18		13
			LANDSCAPE HISTORY					
			HISTORY AND POLITICS	23	32	27	32	27
			HISTORY (PART TIME)	5				
			HISTORY	140	191	198	167	117
		HUM	POLITICS WITH A FOUNDATION YEAR	15	23	33	35	49
			PHILOSOPHY WITH A FOUNDATION YEAR	18	8	14	18	9
			INTERCULTURAL COMMUNICATION WITH BUSINESS MANAGEMENT WITH A FOUNDATION YEAR	6	9	10	13	10
			HISTORY WITH A FOUNDATION YEAR	36	52	45	35	44
			HISTORY OF ART WITH A FOUNDATION YEAR	7		6	5	5
			FILM AND TELEVISION STUDIES WITH A FOUNDATION YEAR	13	19	17	12	17
			ENGLISH LITERATURE WITH A FOUNDATION YEAR	27	46	31	39	35
			AMERICAN STUDIES WITH A FOUNDATION YEAR	15	5	9	5	5
		LDC	SCRIPTWRITING AND PERFORMANCE	11	15	10	16	17
			LITERATURE AND HISTORY	19	25	17	10	12
			ENGLISH LITERATURE WITH CREATIVE WRITING	67	77	56	100	106
			ENGLISH LITERATURE AND DRAMA	12	19	13	11	12
			ENGLISH LITERATURE	143	136	103	87	90
			ENGLISH AND AMERICAN LITERATURE	17	10	7		12
			DRAMA	27	18	33	24	30
		PPL	TRANSLATION, MEDIA AND MODERN LANGUAGES (DOUBLE HONOURS)	5				
			TRANSLATION, MEDIA AND MODERN LANGUAGE		8	5	8	8
			TRANSLATION, MEDIA AND MODERN LANGUAGE (3 YEAR)					
			TRANSLATION AND INTERPRETING WITH MODERN LANGUAGES (DOUBLE HONOURS)		8		7	10
			SOCIETY, CULTURE AND MEDIA	30	30	20	14	26

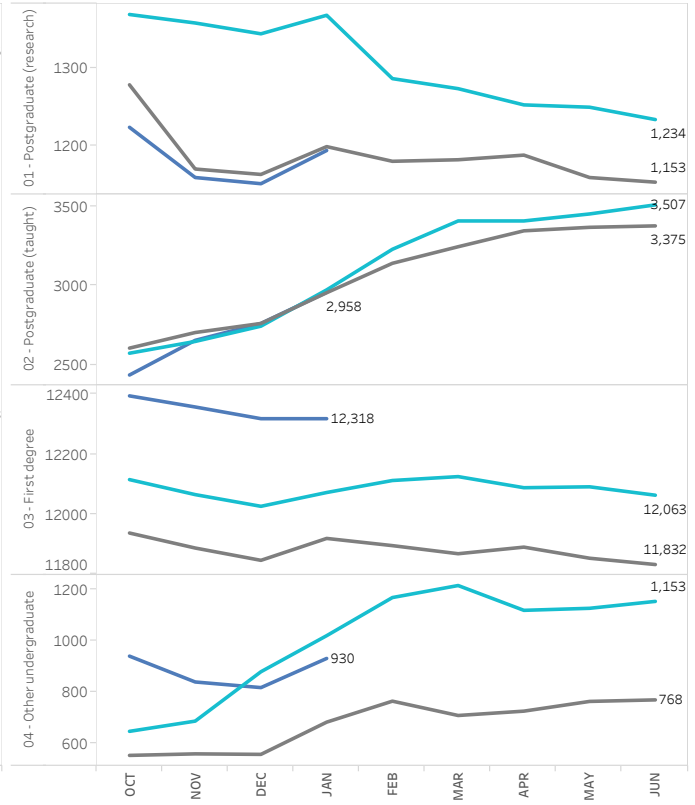
7. Monthly snapshot of currently enrolled active student population - Total population

Academic Year
 2017/8
 2019/0
 2018/9

Institutional Snapshot monthly comparison



Institutional Snapshot monthly comparison by level

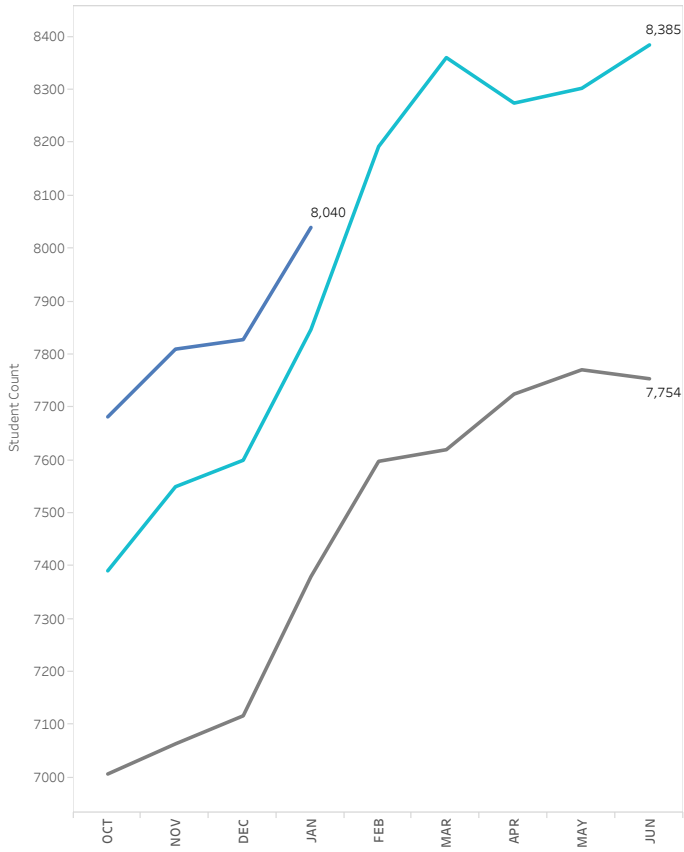


Note: Due to multiple entry cohorts starting in-cycle, it is expected to see peaks in student enrollment numbers leading up to the start of the new calendar year.

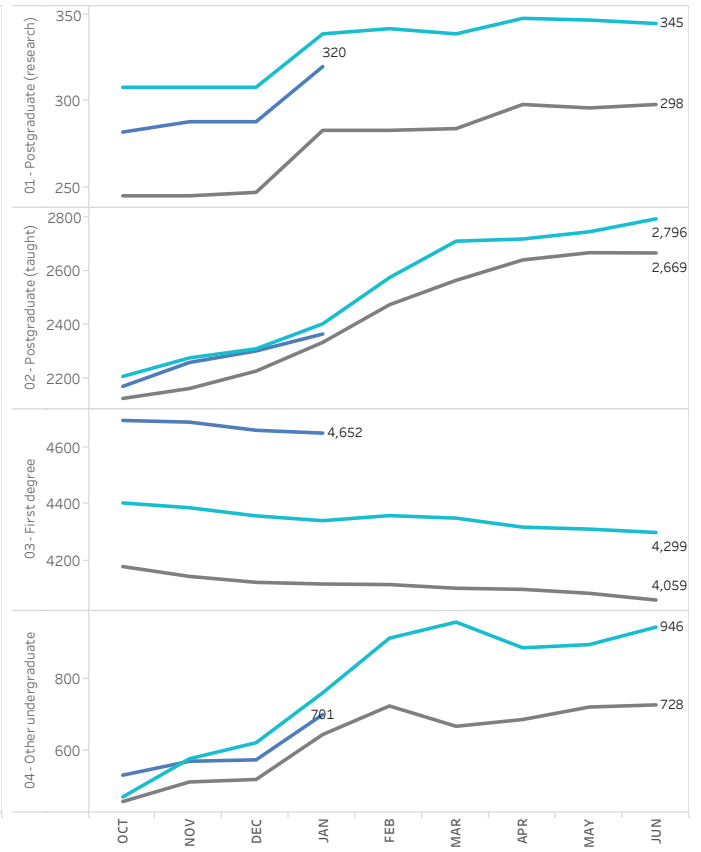
7. Monthly snapshot of currently enrolled active student population - New Starter

Academic Year
 2017/8 2018/9 2019/0

Institutional Snapshot monthly comparison



Institutional Snapshot monthly comparison by level



8. Awards - Level of qualification

Headline Institutional table - 5 year timeseries

Course Acad Award Year	01 - Doctorate	02 - Other higher degree	03 - Postgraduate Certificate in Education	04 - Other postgraduate	05 - First degree	08 - HND/DipHE	09 - Other undergraduate	Grand Total
2014/5	279	1,664	279	267	2,805	69	263	5,626
2015/6	250	1,648	264	331	2,798	69	232	5,592
2016/7	280	1,609	235	330	2,648	136	166	5,404
2017/8	242	1,691	268	373	3,316	143	251	6,284
2018/9	241	1,758	235	371	3,571	156	255	6,587

Headline Faculty table. 2018/9 only. Level of qualification

Faculty	01 - Doctorate	02 - Other higher degree	03 - Postgraduate Certificate in Education	04 - Other postgraduate	05 - First degree	08 - HND/DipHE	09 - Other undergraduate	Grand Total
Medicine and Health Sciences	50	172		156	610	101	31	1,120
Arts and Humanities	44	425		12	1,003	17	91	1,592
Science	104	159		31	789	22	67	1,172
Social Sciences	43	1,002	235	172	1,169	16	66	2,703

Headline Departmental table. 2018/9 only. Level of qualification

Faculty	Dept	01 - Doctorate	02 - Other higher degree	03 - Postgraduate Certificate in Education	04 - Other postgraduate	05 - First degree	08 - HND/DipHE	09 - Other undergraduate	Grand Total
Medicine and Health Sciences	Health Sciences		98		12	448	99	23	683
	Norwich Medical School at the Uni..	47	74		144	162		8	437
Arts and Humanities	Art, Media and American Studies	19	80		5	248	8	49	409
	Arts and Humanities		8						8
	History	6	31			209		11	259
	Literature, Drama and Creative Wr..	15	108			267		10	402
	Politics, Philosophy, Language and..		198		6	279	6	21	514
Science	Biological Sciences	49	58			212		12	335
	Chemistry	8				53	6		72
	Computing Sciences	6	33		8	129		18	196
	Engineering		8			16			26
	Environmental Sciences	25	56			183	5	6	277
	Mathematics	6				85		8	101
	Natural Sciences					25			27
	Pharmacy	10			21	86		14	135
Social Sciences	Economics	6	102			272		7	394
	Education and Lifelong Learning	9	77	235	81	84			488
	International Development	11	137			107		8	270
	Law		68		9	169		29	279
	Norwich Business School	5	523		5	337	5	16	891
	Psychology	7	35			179			226
	Social Work		60		70	21			154

Note: Student populations of less than 5 are suppressed, therefore popl. may not add up to the overall totals for data protection reasons.

8. Award - Classification and Good honours proportion of undergraduate first degree awards

Headline Institutional table - 5 year timeseries

	Course Acad ..	YES				NO			Grand Total
		I*	I	II(1)	Total	II(2)	III	Total	
Student_Count..	2014/5	80	758	1,405	2,243	383	47	430	2,673
	2015/6	100	809	1,390	2,299	314	41	355	2,654
	2016/7	80	817	1,297	2,194	274	32	306	2,500
	2017/8	89	1,064	1,622	2,775	359	37	396	3,171
	2018/9	36	1,098	1,766	2,900	468	40	508	3,408
% of Total Fact Award Count along Table (Across)	2014/5	3.0%	28.4%	52.6%	83.9%	14.3%	1.8%	16.1%	100.0%
	2015/6	3.8%	30.5%	52.4%	86.6%	11.8%	1.5%	13.4%	100.0%
	2016/7	3.2%	32.7%	51.9%	87.8%	11.0%	1.3%	12.2%	100.0%
	2017/8	2.8%	33.6%	51.2%	87.5%	11.3%	1.2%	12.5%	100.0%
	2018/9	1.1%	32.2%	51.8%	85.1%	13.7%	1.2%	14.9%	100.0%

Headline Faculty & Department table. 2018/9 only

Faculty	Dept	Dept ..	YES						NO			Grand Total	
			I*	I	II(1)	MBBS	D	M	Total	II(2)	III		Total
Medicine and Health Sciences	Health Sciences	HSC	4.2% (19)	60.0% (269)	30.6% (137)				94.9% (425)	4.9% (22)	0.2% ()	5.1% (23)	100.0% (448)
	Norwich Medical School at the Univers..	MED				85.2% (138)	6.8% (11)	8.0% (13)	100.0% (162)				100.0% (162)
Arts and Humanities	Art, Media and American Studies	AMA	1.2% ()	25.5% (63)	62.3% (154)				89.1% (220)	10.5% (26)	0.4% ()	10.9% (27)	100.0% (247)
	History	HIS		19.1% (40)	75.6% (158)				94.7% (198)	5.3% (11)		5.3% (11)	100.0% (209)
	Literature, Drama and Creative Writing	LDC		31.5% (84)	62.5% (167)				94.0% (251)	6.0% (16)		6.0% (16)	100.0% (267)
	Politics, Philosophy, Language and Comm..	PPL	0.4% ()	20.4% (57)	62.4% (174)				83.2% (232)	16.1% (45)	0.7% ()	16.8% (47)	100.0% (279)
Science	Biological Sciences	BIO	0.5% ()	34.4% (73)	45.8% (97)				80.7% (171)	18.4% (39)	0.9% ()	19.3% (41)	100.0% (212)
	Chemistry	CHE	3.8% ()	45.3% (24)	26.4% (14)				75.5% (40)	20.8% (11)	3.8% ()	24.5% (13)	100.0% (53)
	Computing Sciences	CMP	2.3% ()	34.1% (44)	41.9% (54)				78.3% (101)	18.6% (24)	3.1% ()	21.7% (28)	100.0% (129)
	Engineering	ENG		31.3% (5)	37.5% (6)				68.8% (11)	31.3% (5)		31.3% (5)	100.0% (16)
	Environmental Sciences	ENV	0.5% ()	21.9% (40)	61.2% (112)				83.6% (153)	16.4% (30)		16.4% (30)	100.0% (183)
	Mathematics	MTH		37.6% (32)	42.4% (36)				80.0% (68)	15.3% (13)	4.7% ()	20.0% (17)	100.0% (85)
	Natural Sciences	NAT	8.0% ()	36.0% (9)	44.0% (11)				88.0% (22)	12.0% ()		12.0% ()	100.0% (25)
	Pharmacy	PHA	1.2% ()	30.2% (26)	52.3% (45)				83.7% (72)	16.3% (14)		16.3% (14)	100.0% (86)
Social Sciences	Economics	ECO	0.7% ()	40.8% (111)	36.4% (99)				77.9% (212)	17.3% (47)	4.8% (13)	22.1% (60)	100.0% (272)
	Education and Lifelong Learning	EDU		26.2% (22)	50.0% (42)				76.2% (64)	23.8% (20)		23.8% (20)	100.0% (84)
	International Development	DEV		26.2% (28)	69.2% (74)				95.3% (102)	3.7% ()	0.9% ()	4.7% (5)	100.0% (107)
	Law	LAW		9.5% (16)	66.3% (112)				75.7% (128)	22.5% (38)	1.8% ()	24.3% (41)	100.0% (169)
	Norwich Business School	NBS	0.3% ()	34.4% (116)	43.0% (145)				77.7% (262)	20.2% (68)	2.1% (7)	22.3% (75)	100.0% (337)
	Psychology	PSY		18.4% (33)	65.9% (118)				84.4% (151)	15.6% (28)		15.6% (28)	100.0% (179)
	Social Work	SWK		28.6% (6)	52.4% (11)				81.0% (17)	19.0% ()		19.0% ()	100.0% (21)

Note: Student populations of less than 5 are suppressed, therefore popl. may not add up to the overall totals for data protection reasons.