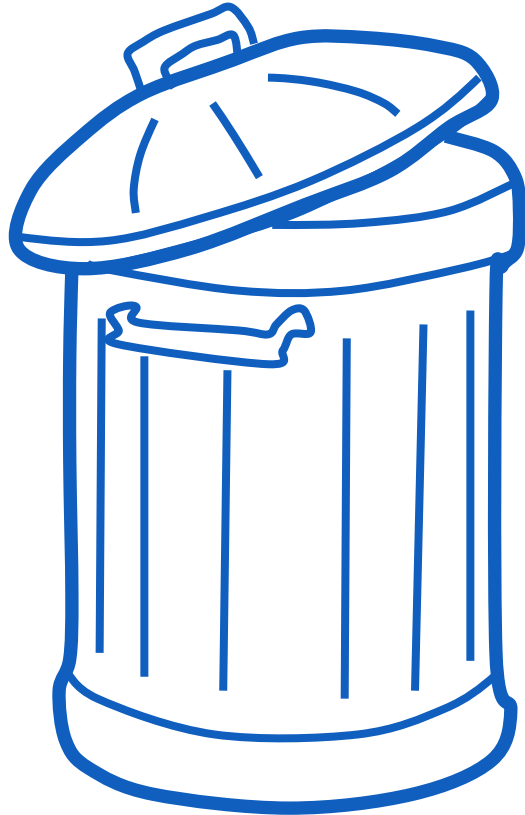


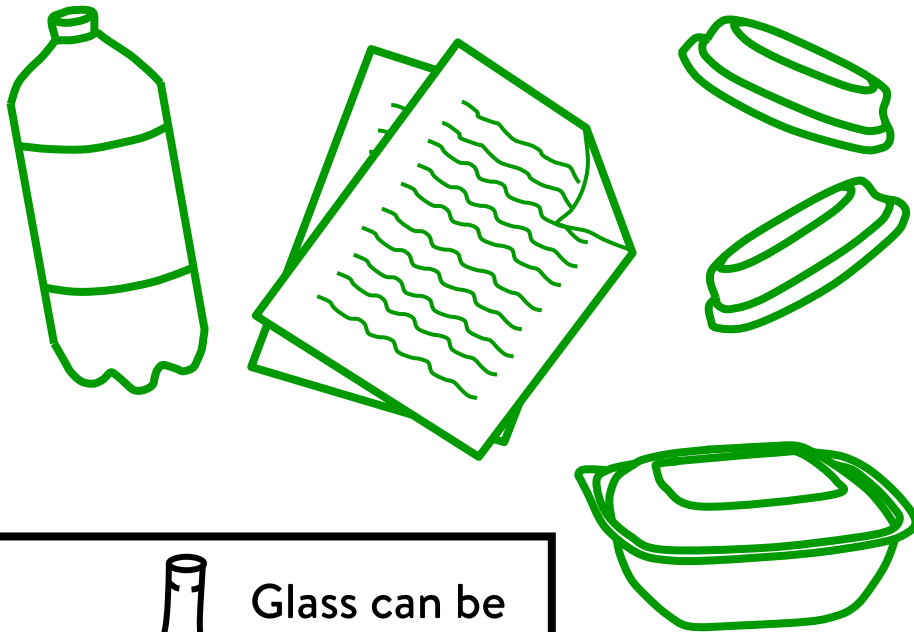
GENERAL WASTE



WHAT SHOULD GO IN:

- Contaminated food packaging
- Crisp packets
- Takeaway drinks cups
- Polystyrene
- Polythene (e.g. plastic bags and wrap)
- Anything else that cannot be recycled

MIXED RECYCLING



WHAT SHOULD GO IN:

- Plastic bottles
- Takeaway drinks cup lids
- Clean food containers
- Paper and cardboard
- Envelopes
- Cans
- Aluminium foil