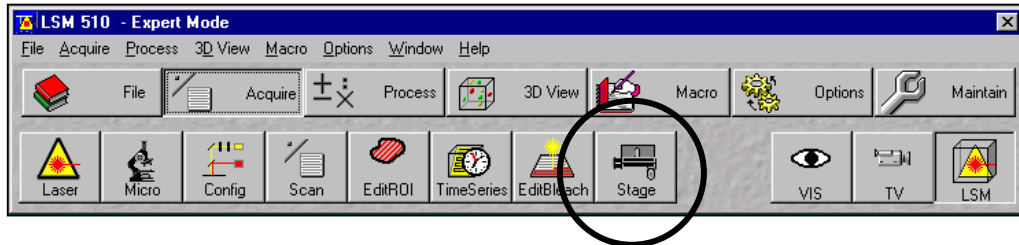


Zeiss LSM510 META

Focus Control



- 1) Find approximate focus on microscope. Then pull out lever on microscope to switch from VIS to LSM.
- 2) Choose Multitrack and apply old image settings using the **ReUse** button.
- 3) Make sure **Acquire** is selected then click on **Stage** (circled above).
- 4) In the dialogue box that opens (see right), set the Z level to 0 by clicking on the **Z** between the two arrowheads under Focus.
- 5) Set "Focus step" to about 1 μm . You can move the focus by clicking on the arrowheads above and below the **Z**. Adjust to roughly the middle of your sample (brightest part of image - temporarily de-select the red channel and use only the green channel).
- 6) Click on **Mark First/Last**, and then click on **Fast XY**. Focus on top (+ve values) of specimen using arrowheads and click **Mark First**, move focus to bottom (-ve values) of specimen and click **Mark Last**, click **Stop**. This sets the limits of the Z-stack acquisition.
- 7) Remember to check scan speed.
- 8) To set the distance between sections, click on **Z Slice**. The Optical Slice dialogue box will open (see below right).
- 9) Select **Optimal Interval** and close.
- 8) The Z settings (**Num slices** and **Interval**) in the Scan Control dialogue box will now have been up-dated to the appropriate values. Click 'New' and 'Start' and a Z-stack will be acquired.

