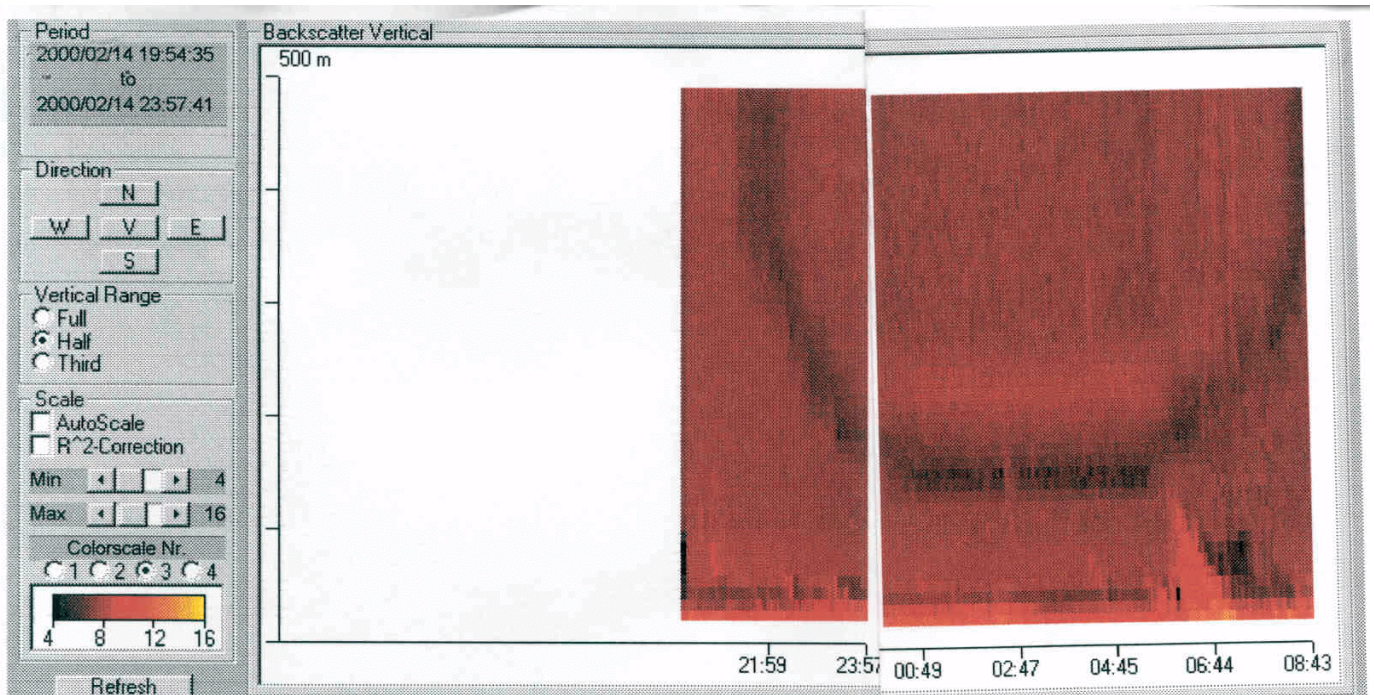
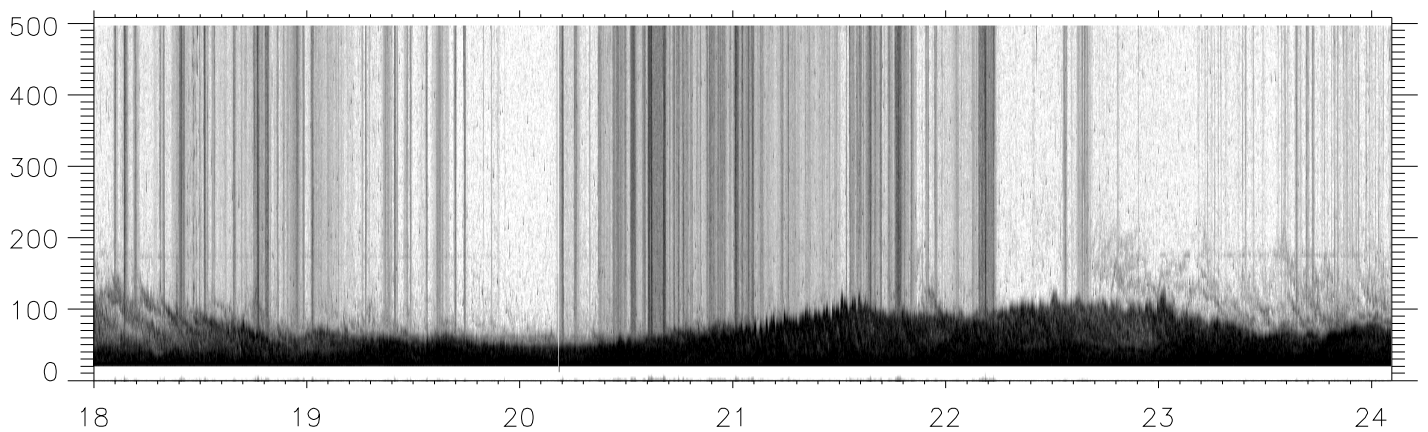
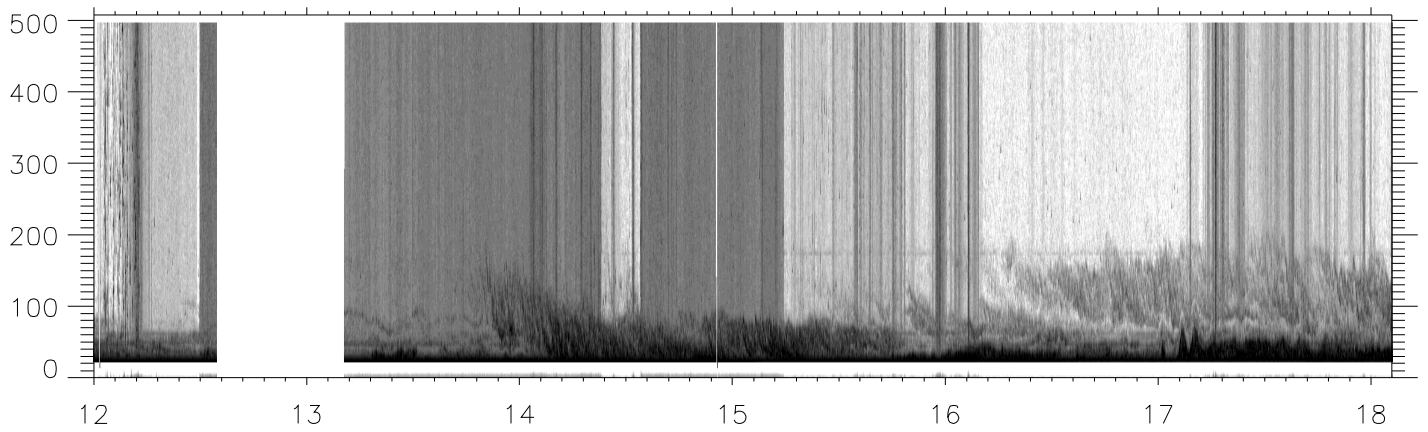
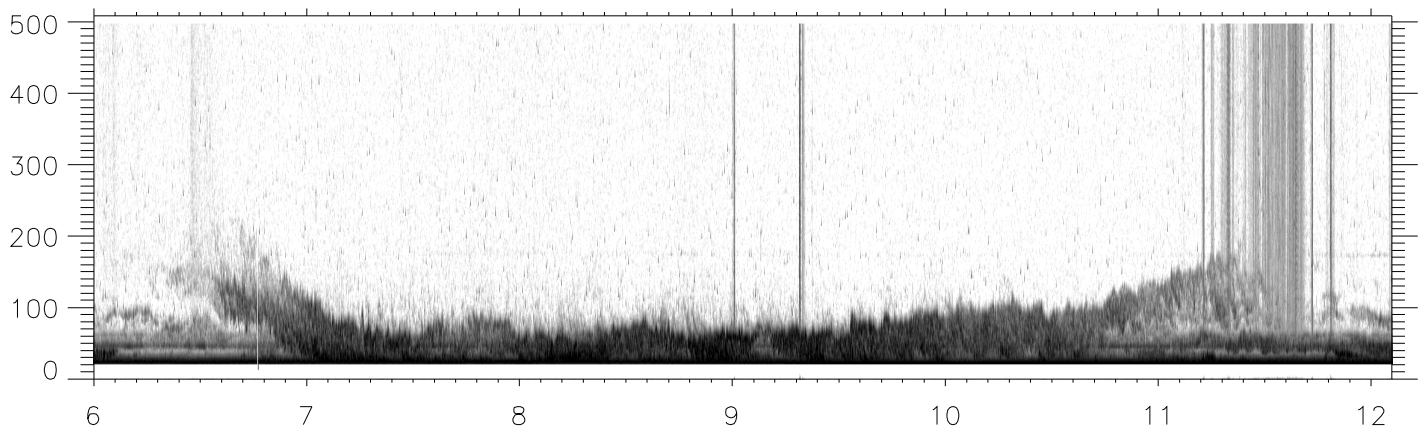
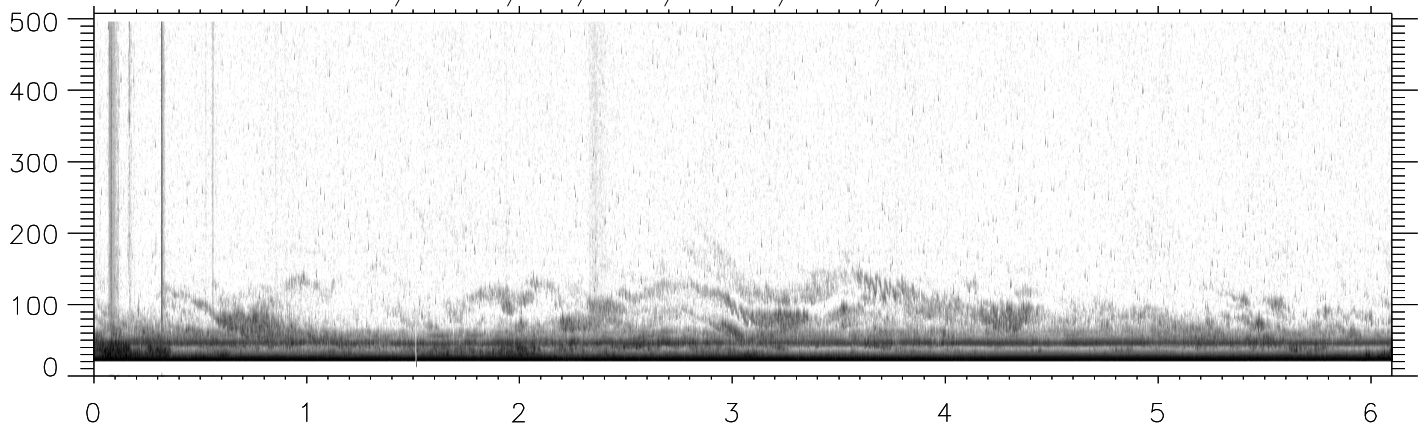


1

exakagi setting
 ↑ ↑ ↑ ↑ ↑
 wind speed/direction typical range: 300-350 | 250/300/200 | bad data.
 ion500 setting
 ↑ ↑
 300 | 350

Figure 1 (above) Backscatter from 9th February and **Figure 2** (below) backscatter from 14th February 2000. **Figure 3** (overleaf) Backscatter sodargram from the Sensitronic sodar for 15th February.





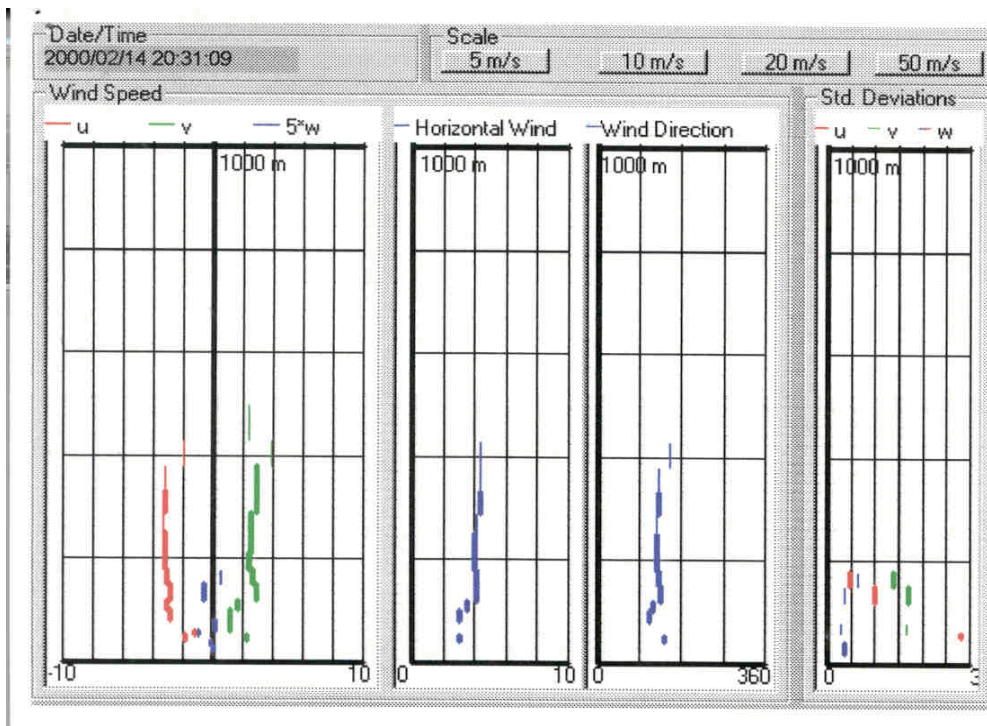


Figure 4 (above) Doppler wind profiles from 20:31 14th February and **Figure 5** (overpage) profiles of temperature, potential temperature, wind speed and wind direction from the descent of a helikite flight between 20:18 and 20:41 14th February.

k000214a down profile 20:18 to 20:41

