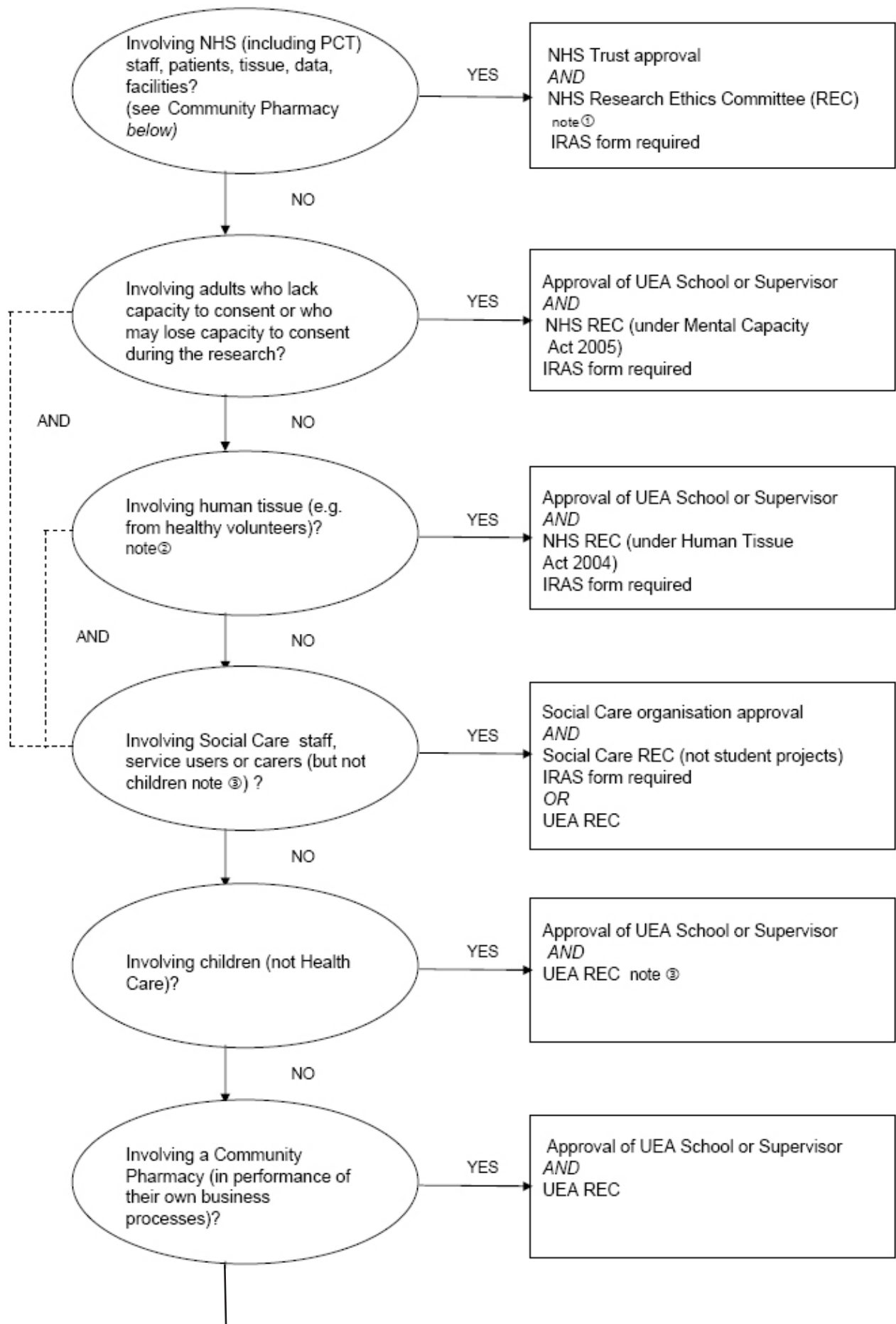
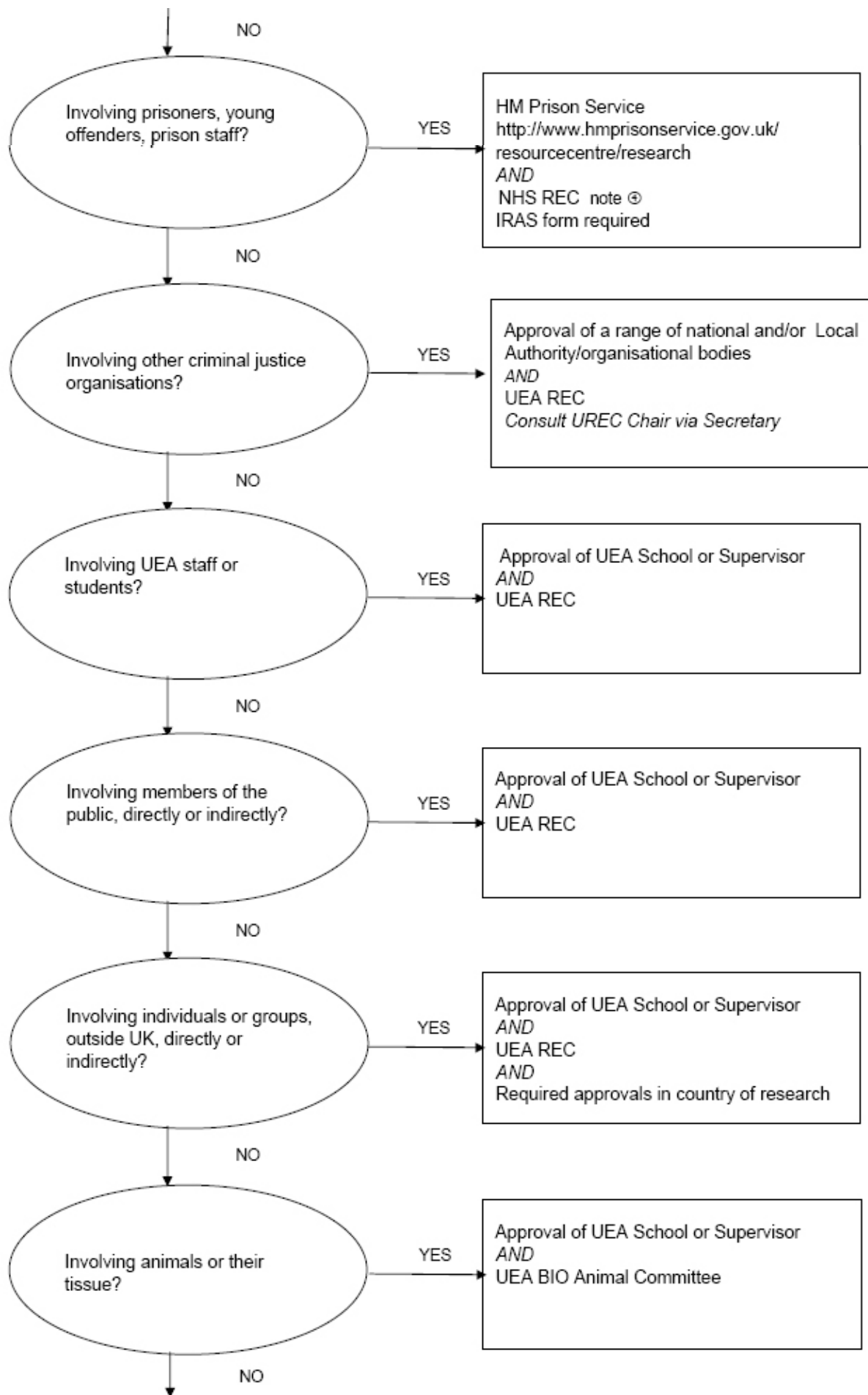


What type of Research Governance and Ethics Review is needed?





This is a guideline, not an exhaustive list of possible types of research. If you need additional help email research.sponsor@uea.ac.uk

- ① This satisfies University REC policy so additional review at University is not required
- ② http://www.hta.gov.uk/db/documents/Supplementary_list_of_materials_200811252407.pdf
- ③ If not health care research, responsibility of Dept of Children, Schools and Families not Social Care so Research Governance Framework does not apply. DCSF also responsible for education research
- ④ Under an agreement between HM Prison Service and the Department of Health, proposals for health related research that will take place in prisons or young offender institutions in England, Wales and Northern Ireland need to be reviewed by an NHS REC that has been designated for this purpose.

v2 May 2009