

January 2010

# broadview

Newsletter of the University of East Anglia

## Climate change will put world at tipping point

See page 5





## Regulars

- 04 All in a day's work
- 06 Alter Ego
- 06 Our sustainable campus
- 08 Meet the team
- 16 Accommodation
- 17 Media Watch
- 18 Listings

## Highlights



- 09 Your pull out and keep guide to UEA London



- 16 International Literary Festival

Front page image: ENV research in Antarctica.  
Photo by Karel Castro-Morales.

**Editor:** Annie Ogden

**Assistant editor:** Lisa Horton

**Contributors:** Simon Dunford, Cat Bartman, Emily Sheldon and Sundari Faraday-Drake

Please send stories (maximum 300 words), media watch entries, event listings and (free) accommodation and small ads to [broadview@uea.ac.uk](mailto:broadview@uea.ac.uk). Broadview can be viewed online at [www.uea.ac.uk/broadview](http://www.uea.ac.uk/broadview)

Date of next publication: **February 18**  
Copy deadline: **February 8**

The broadview team reserves the right to make editorial changes to all submissions.

Broadview is printed on 100% recycled paper (NAPM certified) which is totally chlorine free, totally recyclable and bio-degradable.

## Honours for two emeritus professors

Two of the university's recently retired professors have been recognised in the New Year's honours list.



Ann Barrett (pictured), emeritus professor of oncology and formerly deputy dean of MED was made an OBE for her services to medicine.



Tim O'Riordan (pictured), emeritus professor of environmental sciences, was made an OBE for his services to sustainable development.

Prof Barrett produced the first

technique for whole body irradiation at the time of the earliest bone marrow transplantation work. She is the author of more than 150 papers and four textbooks, including *Practical Radiotherapy Planning*, a fourth edition of which was published in June last year.

She came to Norwich in 2002 to help set up the new medical school under the leadership of the dean, Prof Sam Leinster, and has served on several government commissions and groups including the National Radiotherapy Advisory Group.

She said: "There is no doubt that some of my happiest working experiences have come from my time in the medical school in Norwich.

"Working with Prof Leinster and others in the team, we had an exciting and stimulating time setting up the course and seeing the first cohorts graduate. It was very rewarding to be able to think in new ways about how doctors

should be taught, and I was also fortunate in being able to see during my work in the hospital how well the students were received by staff and patients. I'm now enjoying working as a trustee of the Big C, taking a particular responsibility and care for the family information and support Centre which is very ably run by Jill Chapman and her team."

Prof O'Riordan is sheriff of Norwich and is a fellow of the British Academy. He has edited a number of key books on the institutional aspects of global environmental change, policy and practice, led two international research projects on the transition to sustainability in the European Union (1995-2002) and edited two editions of the text book, *Environmental Science for Environmental Management*.

He is European advisor to the UK Sustainable Development Commission and a member of Sustainability East, the East of England Sustainable Development Round Table.

He said: "During one extraordinary week in April, 1972, I was offered four positions, in Canada, the US, New Zealand and at UEA. I chose UEA because I could see that ENV, with only some 18 faculty at the time, would become the powerhouse of this exciting new integrated discipline.

"This was the best professional decision I ever made. I loved being at UEA. I flourished in the open and exciting intellectual setting that the whole campus offered, and much of my work on sustainability was spawned in Norwich. I remain utterly convinced that the very best environmental science still is achieved in this great and loveable university."

## Vice Chancellor's Open Forum

Vice-Chancellor Prof Edward Acton presented two Open Forums in December in the recently opened Thomas Paine Lecture Theatre.

The events gave members of staff the chance to hear a presentation from Prof Acton, as well as put questions to him.

Around 100 members of staff attended and questions ranged from concerns over noise pollution to the handling of the recent hacking of Climatic Research Unit (CRU) incident.

Prof Acton began by talking about the independent review, headed by Sir Muir Russell, which will look into allegations made against CRU, and went on to talk about how the university will need to reduce its carbon footprint.

"British universities will now be required to put themselves in the vanguard of climate reduction. HEFCE will set a collective target for the institutions it funds. They will then require us to devise our own targets, knowing that the collective target must be achieved. Keele has set a target of being carbon neutral by 2012. We will have to make this a change project to match all change projects."

He described next year's government funding situation as a "challenge for us all", saying that the pension scheme was under "intolerable strain" and that changes would have to be made to make it sustainable. He confirmed that negotiations over pay were effectively over and that an increase of 0.5 per cent was imminent.

Prof Acton pointed to comparative figures on average weekly term-time study hours undertaken by students put UK at the bottom, while within the UK figures show that in many subjects Russell and 1994 group students study on average up to 18 hours less per week than Oxbridge students.

He announced that a third open day is being planned to accommodate the rising number of university applicants wanting to visit UEA.

Question and answer topics included how to promote sustainability and positive health, whether the hacked emails from CRU have damaged the reputation of the university, how long and expensive the independent review will be, concerns over noise pollution, and how UEA London will be promoted.



## Awards for excelling students

Seven first year undergraduate students who excelled in their A levels have been awarded Vice-Chancellor scholarships worth £4,000 per year each at a special ceremony.

The students were congratulated and handed a certificate acknowledging their achievement by Prof Edward Acton in the Council Chamber on December 3.

10 students from non-UK EU countries who excelled in their school-leaving qualifications were also presented with scholarships worth £500 per year.

The scholars were selected by two academic panels who considered the students' academic attainment to date, as well as their academic and wider potential to contribute to the university, based on their UCAS personal statement and reference.

Lucy Brims, a Vice-Chancellor scholar studying Social Work, said: "I was amazed to learn that I had been awarded the scholarship and I think it is an excellent scheme to motivate people to work hard and fully participate in university life. The course is great

and I am also enjoying learning a language in the evenings."

LAW student Sada Abdul Hussein said: "I am very happy to have received the EU scholarship that will allow me dedicate even more time and focus on my studies."

MED student Artem Homer said: "It was a very pleasant surprise that was hard to believe at first. I hope it marks a beginning to a successful relationship with UEA and MED."

Alexandros Papachristodoulou, an EU scholar from Cyprus studying in BIO, said: "I am really enjoying my time at UEA. The university is great and the teaching is really inspiring. It's good to know that the university acknowledges your efforts and rewards you with a scholarship."

For more information on the university's bursary and scholarship scheme please visit [www.uea.ac.uk/reach/sixthform/finance](http://www.uea.ac.uk/reach/sixthform/finance)

## New heads of school appointed in FOH

Prof Val Lattimer has been appointed as the new head of NAM, and Prof Jacqueline Collier will be the head of AHP.



Prof Collier (pictured) joins from Nottingham University where she is Professor of Health Services Research and deputy head of school in the School of Nursing, Midwifery and Physiotherapy.

She is a Health Professions Council registered health psychologist, a registered nurse and has a masters in Medical Statistics. Her areas of research interest are mainly in child and maternal health. She will take up her post in April.

Prof Lattimer joins from Southampton University where she was professor of Health Services Research, deputy head of school and

director of research in the school of Health Sciences (a merged school covering Nursing, Midwifery and Physiotherapy). Her research centres on access to primary care. She takes up her appointment from February 1.

Both professors will be full members of the faculty's Health and Social Science Research Institute, directed by Prof Val Pomeroy.

FOH dean Prof Ian Harvey said: "I am delighted to welcome Val Lattimer and Jacqueline Collier to their new posts. Both bring great expertise in research and teaching. I know they share the faculty's vision of making a significant impact in health provision both through research and teaching, and we very much look forward to their respective contributions here."

## Sixth National Student Survey

The 2010 National Student Survey will be launched in early February and final-year undergraduates are being urged to take part.

Ipsos, the company conducting the survey, will email students during the week commencing February 1, inviting them to complete an online questionnaire at [www.thestudentsurvey.com](http://www.thestudentsurvey.com).

Since its inception in 2005, the National Student Survey has become an increasingly significant performance indicator in HE.

The university has fared particularly well in previous surveys – ranking in the top five mainstream English universities ever since the survey's inception.

It is vitally important that as many students as possible take part in this year's survey. For the data to be deemed sufficiently robust to publish, each subject area must achieve a response rate of at least 50 per cent.

Students will be asked to judge the performance of their course in the following areas: teaching quality; assessment and feedback; academic support; organisation and management; learning resources; personal development; and overall satisfaction.

The UEA contact for the 2010 National Student Survey is Barrie Osborne (ACAD) x2122 or email [NSS@uea.ac.uk](mailto:NSS@uea.ac.uk).

For details of previous surveys, see [www.uea.ac.uk/mac/nationalstudent/survey2009](http://www.uea.ac.uk/mac/nationalstudent/survey2009)

## Annual Fund applications

Last Year the university's Annual Fund allocated more than £68,000 and applications are now being invited for 2009/10.

The purpose of the fund is to enhance the student experience by providing grants for projects that would not normally be financed from core funding.

It also provides an opportunity for alumni to support the university long after they have graduated.

A disbursement panel, on which alumni are in the majority, meets annually to distribute the fund.

Last year 14 projects were funded, supporting amongst others, science lectures for young people, a careers festival and the development of teaching materials. Over the past five years more than £287,000 has been distributed.

Application forms can be found by visiting [www.uea.ac.uk/supportuea](http://www.uea.ac.uk/supportuea). Charlotte Burford, Annual Fund manager will be pleased to discuss any applications prior to submission on x 2220 or by emailing [c.burford@uea.ac.uk](mailto:c.burford@uea.ac.uk).

The deadline for receipt of application forms is February 25, 2010.

## New deputy director for JIC

Dr Giles Oldroyd has been appointed deputy director of the John Innes Centre.

Giles leads the Plant Perception and Response to the Centre's Environment Programme, whose overall objective is to create a coherent understanding of plant-environment interactions.

He is a co-ordinator of the Earth and Life Systems Alliance (ELSA), a unique multi-disciplinary Alliance integrating world-class expertise in biological, earth and social sciences to tackle challenges posed by a changing climate. After receiving a first class degree in Biology from this university in 1994, he studied for his PhD in the University of California, Berkeley. He is an honorary BIO lecturer and has received a number of awards for his research.

## Frank Buttle Trust award

NBS reached the finals for a national award from the Institute of Business Consulting (IBC).

The school was one of three organisations shortlisted by the judges for the Most Outstanding Centre of the Year Award 2009 in the annual IBC awards, which were presented last month. The category rewards the IBC centre that has made an outstanding contribution to the promotion of skills and learning development relevant to the business consulting profession.

NBS has been an approved IBC centre for two years and the shortlisting recognised the consultancy skills provided through its innovative MBA programmes.

Terry Kendrick, MBA programme director, said: "Being shortlisted for this award means that our MBA programme has been recognised by the IBC for providing outstanding consultancy skills training. We are continually looking at how to equip our students with the best skills and knowledge and to do this in innovative ways."

## Green IT conference

A green IT conference about developing sustainable services in higher and further education will be taking place on February 23.

The event will cover both data centres and desktop topics, and provide an opportunity for those involved in IT service provision and estates management to hear how the university and other institutions have tackled the challenge of reducing their IT carbon footprint. As well as exploring best-practice solutions the conference promises an excellent networking opportunity with colleagues from across HE and FE involved in energy conservation projects, and suppliers.

The conference is hosted by the university's JISC funded SISF project, and takes place in the Zicer building.

To attend, email [h.bear@uea.ac.uk](mailto:h.bear@uea.ac.uk) or log on to [www.uea.ac.uk/is/sustainable-ict/newsevents](http://www.uea.ac.uk/is/sustainable-ict/newsevents)

## All in a day's work

Helen Fisher is the new director of faculty administration in HUM



### What do you do in a day?

My role has two key strands. Firstly, working closely with the dean, associate deans, heads of school and administrative staff on strategic planning for the faculty's activities and the implementation of policies and procedures to support these. Secondly, I play a role in the university's governance, sitting on various committees and working groups.

Most days revolve around meetings, both informal and formal, with staff from HUM, other faculties, administrative divisions and external organisations. Items for discussion range from long-term strategic priorities and attempts at crystal ball reading with regard to future government funding to space planning and staffing issues. In fact, meetings can touch on just about everything relating to the university's activities which makes the job so interesting.

### What skills do you need?

An ability to see the bigger picture and to relate the strategic direction of the faculty and university to the practicalities of supporting the faculty's activities. It is important not to get too bogged down in the detail but also to realise when to focus on certain areas.

### What did you do before?

For the last 10 years I have had a variety of roles in academic and administrative departments at UCL and King's College

London and, one way or another, have been involved in most aspects of the administration of teaching, research and enterprise and engagement activities. Prior to that, I was briefly a fairly unconvincing cocktail bartender but can still knock up a decent Long Island Iced Tea when required.

### What do you like about your role?

The fact that I can play a part in the current and future success of this important institution.

### Are there any frustrations?

Uncertainties over funding are 'challenging' but no, not really. I am fortunate to work with an excellent group of faculty managers and senior academics who are creative and proactive and who wrangle enthusiastically with the issues of the day, whatever they may be.

### Any memorable events?

Not yet but the day I master all the UEA acronyms will be the one when I crack open the champagne. I remain convinced, though, that somewhere in the Registry building sits someone charged with creating a new acronym each day...

### What would you like to happen in the future?

I would like to see a full public debate on the value and funding of arts and humanities subjects in higher education.

## FOH vital to new health initiative

FOH has played a key role in winning £650,000 Department of Health funding to help improve the provision of health care for the elderly in Norfolk and Waveney.

A new health partnership, Norfolk and Waveney Health Innovation and Education Cluster (HIEC), of which the university is a core member, has been awarded the funding in a national competitive bidding process.

The partnership will combine skills and experience to accelerate the coordination of health and social care for older people, in mental health, acute services, long-term conditions and end of life care.

The initiative will work to bring the benefits of research and innovation, such as assistive technologies, directly to patients more quickly and effectively.

It will take a lead in work force development and share best practice from around Europe. Norfolk and Waveney will also become a model for other areas of the UK with similar demographics.

Prof Ian Harvey, dean of FOH, said: "We are very pleased to have helped secure this award in what was a highly competitive

process. The faculty's expertise in both research and education will be vital ingredients in the partnership's future success.

"We are looking forward to meeting the challenges and being part of a team which will bring significant and speedier improvements in health care for patients."

Along with the university, the partnership comprises a core membership of Norfolk Community Health and Care, NHS Norfolk, Norfolk County Council, NHS Great Yarmouth and Waveney, Norfolk and Norwich University Hospitals NHS Foundation Trust, Norfolk and Waveney Mental Health NHS Foundation Trust, City College Norwich and James Paget University Hospitals NHS Foundation Trust. Organisations from outside the public sector, including Archant, the publisher of regional and local newspapers, are also involved.

The partnership is one of 17 successful UK applicants chosen by an independent award panel chaired by Sir Alan Langlands, chief executive of the Higher Education Funding Council for England, which awarded more than £11 million in total.



## Oceans of change for fisheries

Fisheries and aquaculture face multiple risks from climate change according to a new study involving scientists from the university.

The report, published by the Food and Agriculture Organization (FAO) of the United Nations, predicts "an ocean of change" for fishers and fish farmers. It concludes that urgent adaptation measures are required in response to opportunities and threats to food and livelihood provision due to climatic variations.

The study, 'Climate change implications for fisheries and aquaculture', is one of the most comprehensive surveys to date of existing scientific knowledge on the impacts of climate change on fisheries and aquaculture. Covering some 500 scientific papers, the picture the FAO review paints is one of an already-vulnerable sector facing widespread and often profound changes.

The report includes contributions from experts from around the world, including Dr Tim Daw and Prof Katrina Brown (both DEV) and Prof Neil Adger (ENV).

Dr Daw and Profs Adger and Brown co-authored the chapter 'Climate change and capture fisheries: potential impacts, adaptation and mitigation', which looks at the social vulnerability of fisherfolk to climate change.

"Marine and freshwater ecosystems will be profoundly affected by processes like ocean acidification, coral bleaching and altered river flows with obvious impacts on fisherfolk, but it is not just about what happens to the fish," said Dr Daw.

"Fishing communities are vulnerable to sea level rise and their livelihoods are threatened by storms and extreme weather. Meanwhile, the social and economic context of fisheries will be disrupted by impacts on security, migration, transport and markets.

"Fisheries are already rapidly evolving due to overexploitation and globalisation. They will suffer from wide range of different impacts from climate change, which may be unpredictable and surprising. The poorest will be least able to adapt to these impacts. For example in Kenya poorer fishers were shown to be less likely to switch to other livelihoods if catches declined."

Prof Adger added: "Climate change is going to be a huge challenge to every sector of society and what we're learning about fisheries shows how difficult adaptation will be, particularly for the poorest parts of the world.

## CCP director joins new edition of Who's Who

Prof Catherine Waddams (CCP) joins fellow newcomers Little Britain comedians Matt Lucas and David Walliams and Hollywood actors Brad Pitt and Morgan Freeman in the 2010 edition of *Who's Who*.

Prof Waddams, who has been a professor at UEA since 2000 and director of CCP since it was established in 2004, lists her hobby as choral singing.

She said: "I am secretly pleased especially because my father was in it. I have appeared before as 1.d (daughter). As he died in 1972, we can't be in the same edition, but I am pleased to carry on the family tradition. I think I was chosen because of my membership of the Competition Commission and involvement in policy discussion about regulation and competition".

The 162nd edition of the reference book has about 1,000 new entries among the list of 33,000 influential and noteworthy people, each with their own mini biography.

## EDU Cathedral event

From learning trails to poetry writing, music and 'quiet thinking', pupils from Queens Hill Primary in Costessey have been taking part in a range of special activities thanks to second year EDU students.

The Key Stage 2 pupils, aged between seven and 11, took part in an activities morning at Norwich Cathedral before Christmas, organised by students on the BA degree in Education Studies.

The event helped university students find out more about contexts in which learning takes place, both within and beyond the classroom. The Cathedral is currently developing an exciting range of themes and activities in a bid to make the Cathedral familiar to young people, and a part of their educational experience.

## COVER STORY

# Unchecked climate change will put world at tipping point

Some of the world's diverse regions and ecosystems are close to reaching temperature thresholds – or 'tipping points' – that would unleash devastating effects, according to a report by WWF and the insurer Allianz.

Prof Tim Lenton (ENV) and Anthony Footit (TYN), led the study which claims the effects of global warming have been underestimated and are likely to be abrupt and unpredictable, creating huge social, environmental and economic problems.

Without rapid immediate action, sea level rise on the East Coast of the US, the shift to an arid climate in California, disruption of the Indian Summer Monsoon, and increasing drought in the Amazon rainforest are likely to affect hundreds of millions of people and cost hundreds of billions of dollars.

The study explores the likely impacts of these tipping points over the next 50 years, including their economic consequences and implications for the insurance sector. It also shows how close we may be to reaching tipping points in other regions of the world

"By translating climate tipping points into tangible impacts on societies, we have tried to show how much is at stake for people in quite different parts of the world," said Prof Lenton.

Global temperatures have already risen by at least 0.7 degrees Celsius. Warming above 2-3 degrees in the second half of the century is likely unless radical and determined efforts towards deep cuts in emissions are put in place before 2015.

Shrinkage of the Greenland and West Antarctic ice sheets which is already underway could lead to one tipping point scenario – with a possible sea level rise of up to 0.5 meters by 2050. This alone is estimated to increase the value of assets at threat by around \$25bn.

"We simply cannot afford to let the climate continue to change unchecked, or we will be facing unpleasant social tipping points," added Prof Lenton.



## Alter Ego:

From craft fairs to cake sales, wine tasting and a Salsathon, Jane Nightingale is working hard to raise a target £3,500 for Macmillan Cancer Support.

Jane, who works as a senior administrative assistant for Student Records in EDU, will be walking the Inca Trail in Peru as a charity challenge, for which participants gather sponsorship to take part.

The four-day trek will see her walk 26 miles to a height of 4,200m through mountainous forests and subtropical jungles before arriving at the mysterious Lost City of the Incas.

"Macmillan have hit upon a winning idea in offering these once-in-a-lifetime challenges. In return, people raise considerable quantities of money, which they might otherwise not have bothered to do. Of the money I raise, at least 60 per cent is guaranteed to go to Macmillan, whilst 40 per cent pays for the costs of the expedition.

"All of us are affected by cancer to some degree and the work of the Macmillan nurses and the support provided to those living with cancer is invaluable.

"Machu Picchu is a very important cornerstone in the heart of the South American culture. I have always wanted to go to South America, so this is the best charity challenge for me," she added.

As part of her charity fundraising campaign, Jane organised a Staff Christmas Fair in the LCR selling everything from Christmas crafts to gifts, cakes and jewellery.

"We had about 15 stalls with a variety of merchandise and everybody got into the Christmas spirit by decorating their stalls. From lunch time onwards we were kept busy by eager shoppers and raised about £180. I also held a wine tasting evening at Earham Hall which was a great success and raised £200."

Jane is now planning a Salsathon at Kier Hardy Hall in St Gregory's Alley, on February 19 with prizes for the last couple or individual still dancing, best dressed and most charismatic dancers. The event starts at 8.30pm and goes on until midnight.

She said: "Anyone is welcome to come along just to dance and enjoy the music but I would like as many people as possible to do the Salsathon and help raise sponsorship money."

To find out more about the Salsathon, donate, or help Jane with her fund-raising efforts, log on to [www.justgiving.com/janessouthamericanjourney](http://www.justgiving.com/janessouthamericanjourney) or email [j.nightingale@uea.ac.uk](mailto:j.nightingale@uea.ac.uk)

## Our sustainable campus

A regular slot focusing on environmental and sustainability news from around the campus.

### Climate change teach-in on campus

A day of lectures, talks and film screenings on climate change issues took place across campus on December 1.

Seminars, lunchtime talks and films were organised to address how climate change interacts and affects development, US media, gender and health amongst others.

The idea of a 'teach-in' originated in US universities in the 1960s, when students and staff opposing the Vietnam war often arranged their own alternative university for a day, called a 'teach-in'.

The UEA teach-in looked at many aspects of climate change including atmospheric changes and energy options, health implications, the impact on developing countries and what can be done to reduce fossil fuel use.

It also included an insight into how climate science and climate change are portrayed by the US media. UEA's Low Carbon Innovation Centre (LCIC) provided information on low carbon technologies and a display on 'green microbiology' was held in BIO.

The event was organised by the Student Union with the University and College Union (UCU), which represents lecturing and academic-related staff.

Leejah Dorward, Union of UEA Students Environment officer, said: "The day was a great success with good attendance at all the events; all the talks, dancing, banners and stalls led to real buzz around campus."



Students dancing in the square as part of the teach-in.

### First single equality scheme and action plan launches

The university has put in place its first 'Single Equality Scheme and Action Plan' (SESAP), recently approved by the university council.

Previously the university had schemes and action plans in place to reach goals relating to gender and disability. The new SESAP includes these but goes further to cover ethnicity, age, sexual orientation and religion and belief.

The scheme describes the university's previous work and current position on equality - but the action plan is the mechanism for really making things happen.

Its actions are aimed at key stages of staff and student life at UEA such as admission, assessment, and retention. Each action in the plan has a firm outcome and states which parts of the university will take responsibility for the goal- so most departments, schools and faculties will be involved in some part of the plan. Each goal also outlines how equality of opportunity is improved by the action taken.

The idea of having a scheme and action plan initially came out of national equality



legislation. As the law has become more complex over time duplication of effort has been hard to avoid. The idea of a 'Single Equality Action Plan' is based on the view that each action, properly thought through and implemented, has the potential to improve equality of opportunity for a wide range of people in multiple ways.

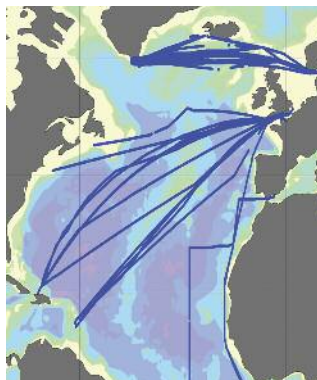
Progress will be reviewed annually and reported to the Equality and Diversity Committee. A full review of the action plan will take place once every three years. It is hoped that many staff and students will actively contribute to achieving these goals - and enjoy benefits from them in coming years.



Left: The M/V Santa Maria has sensors installed and has produced the largest number of data in the north Atlantic, carrying Geest bananas between the Caribbean and the UK between 2002-2007.

Below: Map showing most locations of ships running in 2005.

Credit: Researchers in the EU's 'CarboOcean' project.



## New way of measuring ocean CO<sub>2</sub> uptake could lead to climate change 'early-warning system'

An international team of scientists led by the university has developed a new method of measuring the absorption of CO<sub>2</sub> by the oceans and mapped for the first time CO<sub>2</sub> uptake for the entire North Atlantic.

Published in the journal *Science*, the peer-reviewed study will greatly improve our understanding of the natural ocean 'sinks' and enable more accurate predictions about how the global climate is changing.

The new technique could also lead to the development of an 'early-warning system' to detect any weakening of the ocean sinks – seen by some scientists as the first signal of more pronounced climate change.

Led by Prof Andrew Watson (ENV), the researchers used a network of commercial ships carrying chemical sensors in their engine rooms - combined with other information such as satellite observations of sea surface temperature - to map the uptake of atmospheric CO<sub>2</sub> by the entire North Atlantic Ocean.

The results suggest that the North Atlantic absorption of CO<sub>2</sub> varies substantially over periods of several years and is sensitive to regional changes in climate.

"These exciting results from our new co-ordinated network represent the first time scientists have observed CO<sub>2</sub> uptake over any large region of the world - either land or ocean - with such accuracy," said Prof Watson.

"Our new method estimates the flux and how it varies from year to year and season to season, showing patterns of uptake with a detail never before realised."

It is hoped that similar networks could be established in other major ocean basins well-covered by shipping, making it possible to observe carbon uptake over most of the world's oceans. The networks could be used to give early warning of any weakening in the uptake of carbon dioxide by the global oceans. This uptake is very important in slowing the rise of CO<sub>2</sub> in the atmosphere, and some scientists have warned that such a weakening of the sink could be beginning to occur as climate change becomes more pronounced.

## Engaging with business at Norfolk Network event

The university will be enhancing its business links by hosting a Norfolk Network event on February 25.

The evening will include a keynote presentation from Walter Herriot, chair of the Norwich Research Park (NRP) enterprise and innovation board. Delegates will also hear from organisations that have worked with the university, helping others to identify how UEA can help businesses address both long and short term challenges.

An exhibition will also showcase university projects aimed at working with industry.

The Norfolk Network brings together local entrepreneurs and, as part of the university's long-term commitment to the group, staff and students are eligible for free attendance at their regular events.

Giles Whattam (REE) said: "The increasing

importance of assessing the impact of our research and the university's commitment to enterprise makes partnerships like the one with Norfolk Network increasingly valuable. The evening aims to improve people's understanding of what university-business collaboration can achieve and the many routes available to business to access our expertise."

The event takes place in the Thomas Payne Lecture Theatre from 6.15 pm, with refreshments and a chance to see the exhibition, followed by presentations and an opportunity for networking.

Anyone interested in attending or getting involved please contact the Research, Enterprise and Engagement Office on x1574.

To find out more log on to [www.uea.ac.uk/business](http://www.uea.ac.uk/business) and [www.norfolknetwork.com](http://www.norfolknetwork.com).



## Double celebration for DEV couple

DEV couple Nick Hepworth and Samantha Ross-Hepworth (pictured), who met as students in the school, celebrated gaining their PhDs on the same day last month.

Nick's thesis was titled 'A progressive critique of IWRM in sub-Saharan Africa: Beyond capacity towards self-determined regulatory personality', while Sam's work on biocultural diversity in Tanzania examined the interface between language, social change, and biodiversity conservation in the West Usamabara mountains.

Friends and colleagues in DEV have wished them well in their careers.

## Accreditation for CMP undergraduate courses

The undergraduate courses offered by CMP have received official accreditation from the British Computer Society (BCS) - the chartered institute representing the IT industry.

The BCS accreditation means the courses meet in full the educational requirements for Chartered IT Professional (CITP) status. The courses also partially meet the educational requirements for Chartered Engineer (CEng) status.

A top evaluation was achieved in 17 out of the 20 sections.

The accredited courses are: BSc (Hons) Computing Science; BSc (Hons) Computer Graphics; BSc (Hons) Applied Computing Science; BSc (Hons) Computing Systems Engineering; BSc (Hons) Computing Science, Imaging and Multimedia; BSc (Hons) Internet Computing; and BSc (Hons) Computing for Business.

The BSc (Hons) Business Information Systems was also partially accredited.

The BCS accreditation will allow most CMP graduates to apply for BCS membership, permitting them to put the letters MBCS after their name. It also leads towards CITP and CEng status.

The accreditation is for intakes 2009-2013, but is also backdated to include the 2007 and 2008 intakes.

## MED research presented to social care inquiry

Health researchers at UEA have contributed evidence to the Health Select Committee Social Care Inquiry.

Prof Ruth Hancock and colleagues in MED and at the University of Essex have been looking at the role of cash benefits in the support of older disabled people.

The Health Select Committee decided to undertake an inquiry into the future of social care services following the publication of the Shaping the Future of Care Together green paper.

The evidence submitted to the committee summarises emerging findings from the team's ongoing research into the role of Attendance Allowance and Disability Living Allowance for older people living at home.

Their initial findings show no evidence of significant numbers of older people receiving benefits without having genuine health problems.

On the contrary, the research team found that around a third of over-65s not in receipt of Attendance Allowance would be successful if they made a claim.

## Award for SWP student

A first-year student in SWP was recognised for his outstanding achievements in education when he collected a Helena Kennedy Foundation award at the House of Lords recently.

Terry Bowerman, 38, who is studying for a BA in social work, was nominated for the award by one of his tutors at Lowestoft College in Suffolk after he achieved GCSEs and three A levels, having previously no formal education qualifications.

The Helena Kennedy Foundation is a national charity that provides financial bursaries, mentoring and support to disadvantaged students from the further and adult education sectors, enabling them to complete their studies in higher education and move on successfully into employment.

Terry, who worked as a builder and served in the Armed Forces for six years, decided to return to education just over two years ago.

"I went from having no qualifications to A levels and now I'm studying for a degree," said Terry. "Like anything, at first it was hard work but you just have to get through it and it's worth doing. I'd encourage people to believe they are capable of doing these things and in what they can achieve."

"I was pleased to get the award and if it inspires other people to get back into education and say 'I can do this' then it's worth it. I'm really enjoying my course and want to be able to give something back to society."

Terry hopes to go on to do an MA and pursue a career as a social worker, specialising in children, adolescents and mental health.

## Meet the team

From co-ordinating the Research Assessment Exercise (RAE) and Research Excellence Framework (REF) to negotiating contracts and Knowledge Transfer agreements, the Research Services team offers valuable support to the academic community.

If you would like your team featured please email [l.horton@uea.ac.uk](mailto:l.horton@uea.ac.uk).



L-R: Olly Dean, Alan Walker, Tracy Moulton, Alicia Meldrum, Richard Doyle, Sue Steel, Jason Rust, Julie Shingfield, Fiona Meardon.

As part of the Research, Enterprise and Engagement (REE office) in ACAD, the Research Services team manages both strategic and everyday research activities and liaises across the university, most closely with faculty research offices, to promote best practice.

The team is led by Alan Walker and strategic activities cover supporting the research executive in setting research policy and co-ordinating study leave applications.

Responsible for co-ordinating the RAE 2008 submission, the team is currently working on an impact pilot for the Research Excellence Framework (REF). They also set the internal procedures for operating research and other applications and awards.

Research Services acts as the institutional authority for authorising all research awards. Working as a well established team, they liaise regularly with a diverse range of funders from research councils and charities to various commercial organizations to ensure the best contractual terms for the university are

secured. This can include signing off a research council starting certificate to more complex contract negotiation or post award issue. They identify and manage the systems for costing and reporting on research as well as manage a database of research funding opportunities available to academics.

Within the team are manager Alan Walker and research contracts managers Fiona Meardon and Alicia Meldrum (job share). Tracy Moulton and Sue Steel are faculty aligned to support all non-research council funding, whilst the research contracts associate Richard Doyle supports research council funding across all faculties and deals with REF activity alongside Alan Walker.

All are supported by their administrative team Olly Dean, Claire Gledhill, Jason Rust and Julie Shingfield. The team also provides practical research training both informally and formally through CSED. Research contract managers also consider university sponsorship for NHS ethics and governance applications and Sue Steel is secretary to U-REC.

## Researching thought processes in social anxiety

A study into the thought processes that are relevant to feelings of social anxiety is currently taking place in MED.

The research is being carried out by Jo Illingworth, a research associate in the Psychology and Psychiatry Group, and Dr Sirous Mobini, who is on UEA's Clinical Psychology training course.

Jo said: "Meeting new people, going to a party, giving a presentation to colleagues, contributing to a discussion with peers - all are situations commonly encountered in everyday life. We might feel excited or indifferent about these social situations. But for many of us, they can also be the cause of some anxiety."

"A greater understanding of these thought processes will ultimately aid the development of highly effective treatment possibilities, both

for people with mild feelings of social anxiety and for clinical populations."

An important part of the current research involves 'experience sampling', utilised in collaboration with colleagues at the Cognition and Brain Sciences Unit, Cambridge. This is an exciting method in which participants fill in questionnaires during their everyday lives. Having participants answer questions "in the moment" in addition to more traditional laboratory settings can offer great insights into peoples' experiences of real-life situations.

Anyone who sometimes feels anxious or uncomfortable in social situations and is interested in taking part in the study can email Jo at [j.illingworth@uea.ac.uk](mailto:j.illingworth@uea.ac.uk) for further information about the study, with no obligation to take part. Participants will receive information about social anxiety and £30.

# UEA LONDON

## University of East Anglia

The new UEA London Study Centre is welcoming its first foundation and graduate diploma students this month, while Masters courses will start in March.



### London vision

Vice-Chancellor Prof Edward Acton explains why the University has gone to town.

I am delighted that our first London-based students have just embarked on their studies. This marks an invigorating new chapter in the University's development. Establishing a London centre reflects confidence in our academic prowess and a strategic move to diversify our income streams.

In terms of education, we can be sure of our appeal among the huge cosmopolitan pool of students that now comes within reach. The quality and distinctive interdisciplinary flavour of UEA's research has generated ground-breaking programmes. Successive National Student Surveys have shown extraordinary enthusiasm for our teaching.

The plan is to mount niche programmes rooted in our research strengths and taught with the flair and personal attention to which we are committed. We will begin with four pioneering postgraduate courses – the MBA in Strategic Carbon Management, the MSc in Data Mining for Financial Services, the MSc in Brand Leadership, and the MA in Creative Entrepreneurship. Plans are already afoot for a distinctive new undergraduate degree in International Business and Management.

UEA London is also designed to enrich the experience of Norwich-based students. Now our courses will be able to exploit systematically the national resources concentrated in the capital. I am inviting each School and Faculty to think through how to take full advantage of access to this wealth of political, administrative, cultural,

media, academic and commercial power and opportunity, and to introduce London elements a la carte. It seems to me a key moment to involve and draw on the connections and good offices of our alumni in London.

For some schools, this will be by arranging work placements, be it in the City, the West End, the South Bank, Whitehall or Westminster; for some, by developing London-based study and research projects; for some, by creating a tailor-made 'London semester', operating along the same lines as the study-abroad option available in some programmes.

Skilfully structured, a London dimension has much to offer Norwich-based students. By enhancing their CVs, broadening their experience and networks, and heightening their aspirations and self-confidence, it can give them a flying start in launching and developing a career.

In terms of research, our London base will help us raise the profile and accelerate the impact of our own work and that of the NRP as a whole. Research of international importance needs swift dissemination in the metropolis, whether its implications are scientific, medical, commercial, cultural or in public policy. We will now be able to project it more directly to the national media, opinion-formers, major entrepreneurs and political decision-makers through media events, seminars and receptions on their doorstep.

The undertaking, made financially attractive by



forming another joint venture with INTO and taking a 20-year lease while City rents were historically low, will create new income streams and strengthen our market position. This is vital at a time of unprecedented financial challenge for universities.

We know that for international students London has the strongest appeal. INTO will teach pre-entry foundation and diploma courses to develop English and academic skills. While each cohort is studying in London, we will introduce them to the Norwich campus and, we hope, create a natural pathway for many to continue their studies here.

Where home students are concerned, too, we believe that raising our profile in the capital will enable us to turn the relatively modest number of Londoners coming to study in Norwich into a strong flow.

We will experiment and expand into executive education and Continuing Professional Development at an ideal moment when many in the City of London are looking for new career and personal development opportunities. And we will build study abroad programmes designed to meet the steep growth in demand from the US.

We are the University of East Anglia and flourish in our region, in Norfolk, in Norwich. But our aspirations and achievements go far further. The London Centre, in its prime location, gives us a golden opportunity to spread our influence and reputation as a national and global player.



## The Study Centre

The building provides teaching facilities for up to 1500 students and is designed to include a learning resource centre, cafeteria and extensive administrative and student support areas.

Located close to Liverpool Street Station, it will be connected with an adjacent soon-to-be-completed student complex that offers 1,250 bedrooms, a restaurant, gym and communal space.



## Your questions answered

### What courses will be taught in the Centre?

From this month, we are offering a set of pre-University courses including Foundation, Graduate Diploma and associated English Language preparation.

In September we expand those to include a Diploma programme. These courses are validated by the university and are taught by Joint Venture staff in the same way as our current INTO courses.

Additionally we start a part-time variant of the MBA in Strategic Carbon Management in March and the full-time MA in Creative Entrepreneurship begins in September. These courses will be taught by UEA staff.

### Will people have to travel or move to London?

The project involves almost no re-location. Most of the Joint Venture staff (ie those teaching on pre-University programmes and providing support to the Centre) will be new. Masters programmes will be delivered by UEA

academic staff who will travel from Norwich or may be based in London.

### How can Faculties use the new centre?

The Centre has state-of-the-art teaching facilities for small group teaching. It also has a ninety-seat lecture theatre and general purpose break-out and meeting spaces. There are communal areas with flood-fill WiFi (eduroam authentication) so you may use the Centre for drop-in meetings.

You can also book rooms for meetings, alumni receptions, press launches and so on.

### What courses will be offered specifically to the London market?

The initial Masters offerings are all tailored for London. For example, the MBA in Strategic Carbon Management is, in London, taught part-time in "block mode" - short intensive blocks of teaching from Wednesday to Saturday - and so is designed to appeal to professional people and their employers.

London is a hub for the arts and culture so the Masters in Creative Entrepreneurship will find a natural home in the centre.

### How does the joint venture work?

The Centre is being operated by an entity called INTO University of East (London) LLP which is a Limited Liability Partnership with two partners: the University of East Anglia and INTO University Partnerships. Each partner has invested in the project and will share any profits or losses on an equal basis. From the University's perspective, partnering with INTO University Partnerships allows us to share the risk and to access their in-country marketing and sales network.

### What is the management structure?

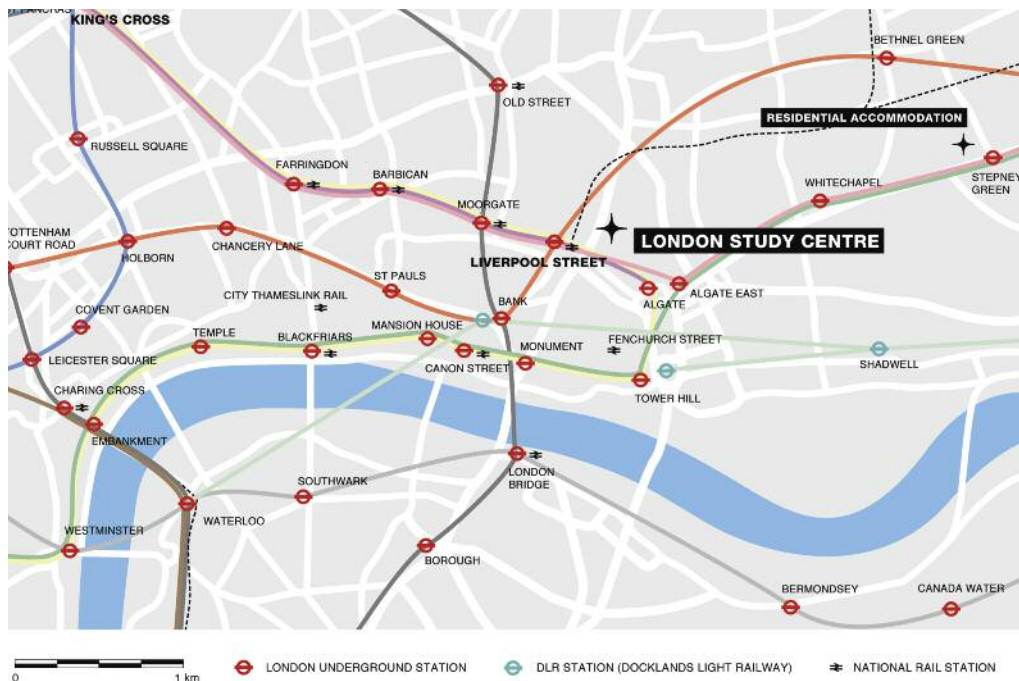
The London centre has a conventional "twin-track" management structure with a UEA dean (Dr Richard Harvey) who is responsible for overall strategy and academic matters and a chief operations officer (Martin Halsall) who runs the centre on a day-to-day basis.

## The location

The Centre is in Middlesex Street, also known as Petticoat Lane.

Petticoat Lane Market has existed since at least the 1750s, and is at its largest on Sundays when it can consist of up to 1000 stalls. The immediate area is steeped in history with Tenterground, Brick Lane, Aldgate and Spitalfields market all within a three-minute walk.

It takes less than five minutes to walk from Liverpool Street to the Centre. Leave the station by Bishopsgate exit and cross Bishopsgate. Turn left, then turn into Middlesex St, which is almost immediately on your right. UEA London is about 200 yards down on the left.



### What is the relationship with City University?

City University is also starting an INTO Joint Venture, INTO City LLP, which will be based in our centre for four or five years.

Initially much of their teaching will be delivered by our Joint Venture, but, in the future, INTO City will hire its own staff and develop its own pre-University programmes. As part of these arrangements, City has agreed to make its facilities available to our London-based staff and students.

### How many students are there?

UEA and City have around 100 students enrolled in January and are expecting around 650 in September. The building capacity is 1500 students which we expect to reach by September 2011.

### What facilities exist for students?

The Centre has an extensive and resilient IT infrastructure that allows access to the standard UEA desktop and associated e-resources.

On Floor 1, a Learning Resources Centre provides the primary library. Adjacent is a small café. Secondary library access is available at the City University library in Northampton Square. Our students will also have access to City University's Sadler's sports centre and City's social facilities.

Representation for our students will be provided by the Union of UEA Students.

### Where will students live?

Our students are currently being offered rooms in student accommodation in Stepney. The Centre is adjacent to a new private accommodation block which is not yet completed. Future students will have also have the option of living there.

### How sustainable is the building?

The building is new so has been constructed to a high environmental standard (and is rated BREEAM "Very Good"). Where possible the furnishings have been constructed from recycled materials.

## Contacts

Until London is fully operational, the UEA London project office continues to be based in the VCO and is managed by Liam Morton. Enquiries should be directed as follows:

Strategy: Richard Harvey (PA, Claire Kreetzer) x4435 and x2128  
Policy, Programme development: Liam Morton (PA, Claire Kreetzer) x2128  
Operations and site management: Martin Halsall x4404  
Room bookings, events: Rebecca Pearson-Close x4424  
Switchboard: x4400 or 0207 6874400

For small ad hoc meetings in the café or public spaces, there is no need to book – just show your staff card at reception.

Further details are on the website at [www.uea.ac.uk/london](http://www.uea.ac.uk/london)

## Who's who in London?



**Richard Harvey**  
The Dean

**Richard has overall responsibility for the Centre and in particular the interface with UEA.**

He said: "It's a complicated project with several partners and a variety of stakeholders so it is quite a busy job.

"As the Centre moves into the operational phase, the day-to-day running of the Centre will move to the chief operations officer and I will revert to a conventional dean's role: academic leadership and strategy".

Dean London also takes an oversight role so he is responsible for the quality of courses run in London and acts as a contact point for all university issues in London.

In Norwich, he is assisted by Liam Morton who is the London project manager and who has been taking the lead on programme validation and approvals, and by Claire Kreetzer who supports the UEA London project office in the VCO.



**Martin Halsall**  
Chief Operations Officer

**Martin is responsible for the day-to-day running of the centre.**

He is an experienced leader and manager in the education sector and has most recently been chief executive officer, Education and Training Division, for the King's Group, an organisation with over 3,000 students (day and boarding), 500 employees and an annual turnover of €40 million.

He was previously bursar and clerk to the Council, Haileybury and Imperial Service College. He has a great deal of experience of restructuring and setting up new systems within educational organisations.

Martin also brings significant strategic management experience as an air commodore in the RAF and with NATO.



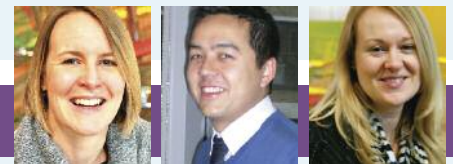
**Rachael Elliott**  
Head of Student Services

**Rachael joins us from Brunel University, where she was Head of International Student Services at Brunel International.**

She has overall responsibility for student services and the welfare of our students in London.

At Brunel, Rachael developed, embedded and maintained student welfare systems and developed policy and processes.

She also delivered diverse student social and cultural programmes, designed and implemented a scholarship scheme and was in charge of staff training initiatives.



### Other members of the team

Among others recently appointed to the London are academic support manager Ruth Harper (left, joining us from Brunel), head of London Sales and Marketing, Dave Amor (middle, joining us from INTO Scotland); three multi-lingual language counsellors, two IT

technicians, a range of teachers – and executive assistant Rebecca Pearson-Close (right), who is the person to contact if you are interested in booking a room at the London Centre or if you have any general practical queries.

## The London logo

The new study centre in London has its own specific logo, which you can see on the front of this pull-out. It has been designed to retain the University's identity while emphasising the unique position of its new London location.

The University's name is used in full to underpin the credibility of the Study Centre as a university-led project.

The typestyle reflects the themes of connectivity and interdisciplinarity which are central to the University's mission, vision and values.

This logo should only be used when producing specific material for courses in the London Centre.

Colleagues should contact the Publications Office to ask for the logo and to discuss its use.

Guidelines explaining in full the rationale behind the design and the ways in which it may be used are available from: [www.uea.ac.uk/mac/comm/publicationsoffice](http://www.uea.ac.uk/mac/comm/publicationsoffice)

## Carbon MBA comes to carbon capital

The world's first MBA course aimed at preparing the next generation of business leaders for a low-carbon economy will soon be available at UEA London in a new updated modular form.

Since its launch in 2007, the MBA in Strategic Carbon Management, run by NBS, has led the way in merging climate change considerations with new business management models to improve business performance and reduce carbon emissions.

The MBA brings together internationally established research and teaching expertise from a number of schools within the university, including ENV - a world leader in this field.

Course director Dr Gideon Middleton said: "An increasing number of companies are starting to recognise that climate change and the need for a global low-carbon life-style will be major factors that shape the global economy, society during this century.

"To many businesses and organisations this creates both significant risks to their current operations as well as opportunities for new products and services. By bringing this programme to London – the world's carbon

capital – we are maximising the opportunity for organisations to meet these challenges and to ensure that future business leaders are equipped with a robust business knowledge and a holistic knowledge about climate change."

The new course is available, part-time, as either a two or three-year modular version and, to minimise impact on business time, each of the 12 standard modules will be delivered in compact format over four-day blocks.

Managers on the course will acquire comprehensive knowledge of the science and impacts of climate change, low-carbon technologies and solutions, the economics of the low-carbon environment, corporate climate change management and carbon-trading. Participants will also undertake two consultancy projects with organisations.

To find out more visit [www.carbonmba.com](http://www.carbonmba.com), contact Jane English, MBA co-ordinator, on x 1753 or email [mbateam@uea.ac.uk](mailto:mbateam@uea.ac.uk).

Dissolution testing of aspirin tablets



## Young, Gifted and Scientific

Year 11 pupils from Norfolk, Suffolk, Cambridgeshire and Essex have been finding out about the ‘story of aspirin’ thanks to an Outreach event organised by CHE and PHA.

The day-long event saw 27 Gifted and Talented pupils synthesising aspirin, analysing their prepared product for purity, and investigating the difference between different forms of aspirin tablets. They also learned about formulation of drugs into medicines by making creams and ointments and watching a tablet-making demonstration.

The event was organised by Outreach

officer Dr Susan Matthews (PHA) and Natalie Bailey, Gifted and Talented coordinator (MAC), and gave the students in insight into higher level study in both chemistry and pharmacy.

The two schools will be hosting another Gifted and Talented event in July. ‘Discover chemistry and pharmacy’ will welcome 50 Year 12 students to campus for a two-day residential course.



## Literary translation in the Middle East

A new programme that aims to bring together Arabic and English writers and literary translators is being launched by the BCLT in Egypt.

Based on a curriculum developed by the centre the scheme is designed to encourage more contemporary Arabic works to be made available to Western readers, and vice versa, and address the shortage of translators.

It also aims to support industry professionals looking to work with English and Arabic translators.

“This is a really exciting development as it is the first ever coming together of Western and Arabic translators in such an intensive format,” said BCLT associate director Valerie Henitiuk, who is serving as consultant on the design and delivery of the programme. “The main goal is to increase cultural exchange between the English-speaking and Arabic-speaking worlds, and we are excited to be working with both fiction and theatre.”

The week-long residential course, which is based on the internationally-renowned BCLT Literary Translation Summer School, will take

place in Cairo from January 24-30. It is being organised by the BCLT and British Council, with support from Arts Council England. Penguin Arabia is the industry partner.

Participants will take part in intensive hands-on workshops translating fiction and theatre from Arabic to English and English to Arabic. The authors being translated and taking part in the course are novelists Nicholas Blincoe from the UK and Adania Shibli from Palestine, as well as playwrights Mike Bartlett from the UK and Kamal Khalady from Morocco.

The workshops will be led by translators Tony Calderbank, Taher Deeb, Zeinab Mubarak, and Paul Starkey, and lectures and panel discussions will feature representatives from publishers such as Penguin and Bloomsbury, as well as organisations such as Egypt’s National Literary Translation Centre and the American University in Cairo. Seminars and lectures will address various aspects of the theory, practice and business of literary translation.

The Middle East programme is the second phase of an ongoing project to export the BCLT training model and share the UEA-based expertise with a range of international partners. It follows a highly successful programme for translators from and into Chinese, which began in 2007.



L-R: Jennifer Chapman, Andrei Popescu, John Healy, Vic Rayward-Smith (head of CMP), Ross Buggins, Matthew Sladen, and Kegan Dougal.

## Success for immortal team

A programming competition for students in CMP saw the winning team take home a cash prize of £700 in December.

‘The Immortal Coderiders’, better known as Andrei Popescu, Matthew Sladen, Kegan Dougal and Jennifer Chapman, beat off competition from five other teams to win both the undergraduate and open (including both undergraduates and postgraduates) categories.

The prize money was kindly donated by two former students John Healy and Ross Buggins, who have set up a successful local company, Shore Tech, specialising in database architecture, management and web application integration.

The tasks were set by another former CMP student, David Cartwright, who also acted as chief judge. David works in Jersey and has run similar programming competitions for the British Computer Society and for commercial banks.

## Aerodynamic research meeting

The 75th birthday of Prof Norman Riley, who has been a member of MTH since 1964, was celebrated last month with a two-day research meeting.

The event, about Aerodynamic Boundary Layers, included 14 invited lectures delivered by internationally-renowned experts in the field.

The theory of boundary layers in aerodynamics is crucial to understanding the lift and drag generated on a moving aircraft. Boundary layers occur not only in aerodynamics but in any fluid moving rapidly past a solid body, and can also arise in financial models of the stock market.

Topics ranged from historical reviews of the subject area to state-of-the-art advances in computational modelling of air flow over wings.

Results presented during the meeting offered new insights into a range of complex physical phenomena with important implications for a wealth of applications including aircraft design, food technologies, and arterial blood flow.

## Cleaner wins £500 prize

A cleaner from Britten House has scooped £500 in Jarrold vouchers after winning a First Buses competition to name a new bus pass.

Alan Gray coined the name ‘Fusion’ to represent seven bus companies merging together.

Workshop on integrated natural resources management.



## Resources management in Iran

Although in the news recently for other reasons, Iran suffers extensive land degradation in its semi-arid heartland and along the two major mountain ranges where many poor tribal communities exist.

Prof Michael Stocking (DEV) recently completed a two week mission to Tehran to help the Ministry of Jihad Agriculture and the United Nations Development Programme develop a new project to integrate the management of Iran's land, water and ecosystem resources. The aim is to bring benefits to local livelihoods, especially of marginalised people, as well as to deliver global environmental benefits in sequestering more carbon and conserving threatened biodiversity.

After conducting several workshops on integrated natural resources management for the Forest, Range and Watershed Management Organisation of the Ministry, Michael advised on the choice of field and demonstration sites from four provinces in Iran that can exhibit 'integration' in practice.

## Psychology society launched

Prof Philip Corr (SWP) has co-founded the British Society for the Psychology of Individual Differences (BSPID) with Prof Eammon Ferguson from Nottingham University.

The society will further scientific enquiry within the general field of individual differences, including personality and intelligence, in the UK.

It also aims to facilitate theoretical, basic and applied fields, and will work to achieve an integration of the psychology of individual differences and experimental, cognitive, and social psychology.

The society holds periodic meetings at which papers are read and discussions held, and also acts as a forum for the exchange of ideas and findings.

Both Nottingham University and UEA have strong teams of psychologists working on the psychology of individual differences, especially as they relate to important real-world outcomes such as economic decision making and vulnerability to clinical disorder.



Fireman and ambulance crew at the scene of the 'accident'.



## Collision drama crashes into Health and Social Care conference

FOH helped organise a realistic car crash rescue in December, to promote careers in health and social care to more than 100 pupils from around Norfolk.

The 14 and 15-year-olds, who had no idea what they were about to witness, saw a real car being cut open by the fire service in Swaffam, victims being extracted from the wreckage and witnesses being interviewed by police.

The day organised by the Britten Partnership and funded by Aimhigher Norfolk drew upon many organisations such as police, fire and ambulance services, with local drama students playing the victims.

The pupils not only witnessed the 'crash' but also had the opportunity to participate in workshops delivered by professionals that would normally be involved in a road traffic collision and its aftermath.

As part of the Outreach scheme FOH provided a range of workshops including a physiotherapy workshop concentrating on the physical rehabilitation of one of the victims, and an occupational therapy workshop explaining how another of the victims would be supported in their return to employment. As one of the passengers was pregnant the university's midwifery team were also involved, shocking and captivating their audience in equal amounts as they staged a 'live' birth!

The drama of the day captured the attention of the young people who attended and provided an eye opening insight into the vast array of people and careers involved in just a single collision.

## Big Lottery Fund grant for new study on children in care and offending

The university and The Adolescent and Children's Trust (TACT) have been awarded a grant of £211,651 by the Big Lottery Fund Research Programme to carry out a study on looked after children and offending.

The 18-month project, entitled 'Looked after children and offending: identifying risk and protective factors', will be led by TACT in partnership with a research team led by Prof Gillian Schofield, co-director of the Centre for Research on the Child and Family based in SWP.

Looked after children are twice as likely as children in the general population to be cautioned or convicted of offences. Forty per cent of children in custody and 25 per cent of adult prisoners have been looked after.

This national project will aim to understand what lies behind these high rates and use the findings to help care and youth justice agencies to reduce risks of offending and criminalisation, and to promote life-chances, resilience, pro-social behaviour and physical

and emotional well-being.

Prof Schofield said: "This research will investigate one of the most troubling issues for those involved in helping young people in the care and youth justice systems, and for wider society.

"Children who come into care from backgrounds of adversity, abuse and neglect are already at higher risk of conduct problems and offending behaviour.

"We need to know why some high risk young people's pathways in their families and then in care lead to offending and criminal careers while others do not. To improve policy and practice we need to identify and minimise risk factors, but also to identify and promote protective factors in the lives of young people and in our care and youth justice systems."

## New framework measures electricity independence

Researchers Konstantinos Chalvatzis (ENV/NBS) and Elizabeth Hooper (CCP/NBS) have developed a new framework to assess a country's self-sufficiency in electricity.

Of the countries studied, results show that Greece and the UK became much more dependent on imported electricity and fuel between 2000 and 2005, while Poland has become electricity independent but relies on highly polluting fuels.

EU sustainable energy policies aim to reduce greenhouse gas emissions whilst ensuring security of supply and a competitive EU electricity industry. The research aims to provide suggestions that allow for an improved understanding of the synergies and trade-offs that various policy options may introduce.

Using recent data from the Eurostat database the study applied a new method to produce a picture of the fuel mix for the years 2000 and 2005 in Germany, Greece, Poland and the UK. It calculated the extent to which each country relies on imported resources for its electricity generation. This information can be useful in helping identify the impacts of sustainable energy policies in different countries.



In the UK the share of coal in the fuel mix increased by 2.3 per cent between 2000 and 2005. However, we have become more reliant on imported fossil fuel as our own resources have depleted. Slight increases in the use of renewable energy sources such as wind power and biomass did not offset the dependence on imported coal and gas. Electricity dependency therefore rose from 40.7 per cent to 51.4 per cent.

The UK and Poland have both used renewable obligation schemes but, especially in Poland, the share of renewable energy indicates the policy has been unsuccessful.

The study, 'Energy security vs. climate change: Theoretical framework development and experience in selected EU electricity markets' was published in the journal *Renewable and Sustainable Energy Reviews* and covered by *Science for Environment Policy*.

## Prof Thoburn represents SWP on international stage

Emeritus Professor June Thoburn represented SWP's Centre for Research on the Child and Family at two international seminars in December.

Each looked at different aspects of the lives of vulnerable children 20 years after the Convention on the Rights of the Child was adopted by the UN.

Prof Thoburn has been working with UNICEF to agree guidelines for a minimum data set to be used around the world to collect and compare information on services for children separated from their parents.

She gave the introductory paper at a UNICEF/ Save the Children conference on 'The Neglected Agenda: Protecting Children Without Adequate Parental Care'.

The 60 conference participants included government ministers and senior civil servants

from 16 developing countries as well as representatives of international organisations and aid agencies, including the World Bank, and researchers from USA and the EU.

The second event - the triennial meeting of research institute members of Child Watch International in Addis Ababa - followed a conference entitled 'Children's Rights at the Crossroads', which was attended by more than 400 academic lawyers, economists, medics and social workers from rich and poor nations.

The majority of Child Watch members are from sub-Saharan Africa and Central and South America, and UEA is one of five key UK member-institutions.

The 35 delegates also included colleagues from Australia and New Zealand, Japan, India, the USA and the EU.

## Award for CMP research

Dr David Connah and Prof Graham Finlayson (CMP) have been successful in securing a £25,000 Pathfinder award to develop a technical demonstrator for their image processing software.

The software allows enhanced presentation of multiple image channels to be represented in a single image.

Dr Connah said: "A traditional colour image is displayed in three channels, which represent amounts of red, green and blue light. But it is actually possible to capture as many as 200 channels, including ultra violet and infra red.

"We have developed a method that allows these multiple channels to be presented in a single, three channel, colour image. This can result in previously hidden content becoming more visible, enabling greater distinction between objects of similar shades.

"The techniques have real potential for use within the analysis of satellite images or medical imaging where very small differences in images can be significant, but there are probably other applications we have not yet considered."

The Pathfinder award has been made by Icen Seedcorn Fund and is a key stepping stone in making this technology opportunity a commercial reality. The project will run for six months and will include development of the new technology and initial business development activity with potential users.

Further information about Pathfinder awards is available from the Research Enterprise and Engagement Office by contacting Giles Whattam on x 1582.

Dr Connah is keen to collaborate with university colleagues who use images within their research - particularly where image analysis is important. If your research includes working with any kinds of image including satellite, medical or biological imaging, please email [dc@cmp.uea.ac.uk](mailto:dc@cmp.uea.ac.uk) or call x 3287.

## LCIC in electric car scheme

Norwich could soon become one of the UK's first electric vehicle (ev) cities with help from the university's Low Carbon Innovation Centre (LCIC)

The centre is currently in talks with Norwich City Council about the scheme and business leaders are being urged to consider acquiring electric vehicles for their fleets.

A new partnership for procuring evs is being contemplated following central government incentives including making evs exempt from company car tax for five years from this April.

The university's biomass plant will be an ideal point for charging cars.

LCIC's Marcus Armes said: "Representatives from LCIC have had meetings with Norwich City Council and hope they will take the lead in putting together a partnership of local businesses to acquire electric vehicles for their fleets."

## Accommodation

FOR SALE: Italian holiday home for sale in beautiful Abruzzo. 2 double bedrooms, kitchen, living room & bathroom. Recently restored throughout. 10 miles to ski resort, 15 miles to beach. Surrounded by stunning scenery. Nearest airport Pescara. Photos available. £45,000. Contact Emily on 07900 810232, email e.sheldon@uea.ac.uk

FOR SALE: Georgian maisonette in the city centre, 2 bedrooms, 2 reception rooms, 1 bathroom, separate en-suite washroom, private storage & reserved car park. Possibility of using one of the reception rooms as a third bedroom. Very good condition. Leasehold for 110 years, annual charges including the ground rent £239. £165,000. Contact: h020@uea.ac.uk

FOR SALE: Exceptional city centre house for sale, in quiet location near Cathedral. 3 reception, kitchen/breakfast, 5 beds, one currently a huge study. Garage and parking. ORO £450,000. Contact 01603 283736 evenings.

TO LET: House for UEA visits or a holiday break. Five Islands House is based on the Norfolk/Suffolk border, overlooking a beautiful & private lake famous for its carp fishing. The house is newly renovated & decorated – comfortably sleeping 5. [http://www.homersfieldlake.com/Site/Five\\_Islands\\_House.html](http://www.homersfieldlake.com/Site/Five_Islands_House.html)

TO LET: 17th century self-contained and furnished studio flat for one person, available from Jan 30. Bed-sitting room; inglenook fireplace, shower room and kitchenette. Own yard. Central city. UEA 10 mins by car, 20 mins by bus - stop to university 30 seconds away. On street permit parking available. £440 pcm. Contact [anna.green@uea.ac.uk](mailto:anna.green@uea.ac.uk)

TO LET: Two-bed terraced house off Earlham Road. Furnished. Fitted kitchen, including washing machine. Upstairs bathroom with shower. Would suit couple or small family. £575 per month (plus bills). Available from February. Contact: [scotts414@btinternet.com](mailto:scotts414@btinternet.com), tel: 01603 505720.

TO LET: Room near St John's Cathedral, Earlham Road, on No 35 bus route. £80 pw including all bills. Would suit postgraduate non-smoker. Contact Margherita Colombo 01603 662937.

TO LET: 3/4 bedroom large Victorian town house, excellent condition, north city. Newly redecorated, £750 pcm. Contact Mark Barlow 07827 964653, [m.barlow@uea.ac.uk](mailto:m.barlow@uea.ac.uk)

TO LET: Unfurnished bright and airy well presented property in Bawburgh. Newly decorated and carpeted. Full width balcony with far reaching views. Triple aspect 24' lounge with open fire and door to balcony. Double aspect fitted kitchen, 3 double bedrooms, bathroom with shower over bath, additional cloakroom/wc. Oil-fired central heating. Garage, driveway and garden with small small orchard. £850 pcm inc garden maintenance. Contact: Louise Mangeot 07776 201 479, [louisemangeot@msn.com](mailto:louisemangeot@msn.com)

## Small Ads

Transcription services available for research interviews, lectures, presentations, focus groups, conferences, podcasts and meetings, from both digital and tape formats. Prices discounted for university departments and students. Proofreading and copy editing services also available Visit <http://www.ibtranscriptionservices.co.uk> or <http://www.ibeditorialservices.co.uk> for more information, or call Irene Boston 01485 543746.

## Spring Literary Festival ticket booking information

All events take place in LT1 and begin at 7pm (doors 6.30pm). Season tickets are £42 (£36 concs) and individual tickets are £6 (no concs). Poetry passports, valid for Don Paterson, Robin Robertson and Simon Armitage, are £12 (no concs). Tickets available from the UEA box office on 01603 508050 or online at [www.ueaticketbookings.co.uk/events/](http://www.ueaticketbookings.co.uk/events/) To find out more visit [www.uea.ac.uk/litfest](http://www.uea.ac.uk/litfest)



Clockwise from top left: Esther Freud, Simon Armitage, Joanne Harris, Robin Robertson, Laila Lalami, Jim Grace, and Joshua Ferris.

## Spring Literary line-up announced

An international line-up of novelists and three of Britain's leading poets will be taking part in the 2010 Spring Literary Festival which starts on January 26.

Esther Freud, whose autobiographical novel *Hideous Kinky* was turned into a film starring Kate Winslet, and Joanne Harris, whose book *Chocolat* became an Oscar-nominated film, are among those giving readings and talks.

Festival director Prof Lavinia Greenlaw said: "We attract the best writers from all over the world and the best audiences a writer could hope for. This year, we have made a highlight of poetry and are working in association with The Poetry Trust in order to develop our poetry audience. Several of the writers have also agreed to spend time with some of our Creative Writing MA and PhD students, who will benefit hugely from their insight and expertise."

**Don Paterson** (January 26) is one of the most gifted poets writing today. His fourth collection, *Rain*, won the 2009 Forward Prize, and among his many other awards are the TS Eliot Prize for both *God's Gift to Women* (1997) and *Landing Light* (2003). He is a musician, poetry editor at Picador, and lives in Dundee where he grew up.

**Laila Lalami** (February 16) grew up in Morocco, and studied in London and California. In 2006 she was shortlisted for the Caine Prize. Her novel, *Secret Son*, was published to immediate acclaim and is the story of a young man living in the Casablanca slums, whose discovery of his father leads him into a dangerous political world.

The American novelist **Joshua Ferris** (February 23) acclaimed debut, *Then We Came to the End*, is an acute study of office life and what it means to sit all morning next to someone you cross the road at lunchtime to avoid. His new novel, *The Unnamed*, is the story of a man who loves his work, his family, even his kitchen. One day he walks out, and finds he cannot stop walking.

**Robin Robertson** (March 17) is a celebrated Scottish poet who has won many awards

including all three categories of the Forward Prize - most recently, the 2009 Best Single Poem award for 'At Roane Head' which features in his new collection, *The Wrecking Light*. He is poetry editor at Jonathan Cape, and lives and works in London.

Novelist **Jim Grace's** (April 19) extraordinary reimaginings of the world we think we know and the questions we don't care to address has led to such renowned and controversial novels as *Quarantine* and *Being Dead*. His new book *All That Follows* is the story of a jazz musician reconciled to a quiet life in the suburbs, whose world is turned upside-down by a news bulletin.

The novelist **Joanne Harris** (April 28) is a linguist and former teacher who lives in Yorkshire. Her third novel, *Chocolat*, became an Oscar-nominated film and has been followed by seven other bestsellers. Her latest book, *Blue-eyed boy*, is a thriller set in the dark corners of the internet where a man pursues murderous fantasies as his past is revealed.

**Esther Freud** (May 13) trained as an actress before publishing her hugely successful debut novel, *Hideous Kinky*. She is much admired for her inimitable sense of childhood and place, and her books include *The Sea House*, a celebration of the East Anglian landscape. Her new work, *Lucky Break*, features a group of young actors negotiating the forces of ambition and uncertain alliances. She lives in London and Suffolk.

**Simon Armitage** (May 19), one of Britain's best-known and best-loved poets, has received numerous awards and has published nine collections including *CloudCuckooLand* and *The Universal Home Doctor*. He writes for radio, film and television, and has also written novels and plays as well as an acclaimed version of *Sir Gawain and the Green Knight*. His new collection is *Seeing Stars*.

# Media Watch

Making the headlines this month



**Prof Mike Hulme (ENV)**  
Radio Suffolk, Real Radio, GMG Radio, Radio Cambridge, ABC

Radio, The Economist (new book), Australian Newspaper, Financial Times, ITN News, Daily Mail online, The Guardian, Radio 4 PM, Radio TalkSport, BBC local radio, The Sunday Post, CNN, Semana (Copenhagen), Sunday Times, BBC online, Canadian Broadcasting Corporation, THE, Wall Street Journal, World Service, BBC Radio Wales, Toronto Globe, ENDS Report (CRU hack)



**VC Prof Edward Acton**  
BBC News at 10, BBC Look East, CNN, Sky News, FOX News, Radio 4 PM, BBC

Newsnight, Wall Street Journal (CRU hack)

**Dr Sarah Churchwell (AMS)**  
BBC Radio 4 (Oprah) Psychologies (2009) Evening Standard (Ted Hughes), CBC Canadian Radio (vampire and Amish romances), The New Statesman (best books of 2009), The Independent, Belfast Telegraph (Tiger Woods), Radio 4 Front Row (Hamlet), Women's Hour (poetry)

**Prof Steven Hooper (ART)**  
EDP, Radio Norfolk, Future Radio (lecture)

**Prof Dylan Edwards (BIO)**  
Evening News (Francesca Gunn Laboratory)

**Prof David Richardson (BIO)**  
Evening News, Financial Times, Online (rock breathing bacteria)

**Leanne Ward (CueEast)**  
Radio Norfolk (book)

**Prof Catherine Waddams (CCP)**  
EDP (Who's Who)

**Dr Jurian Hoogewerf (CHE)**  
The Times (unsolved murder)

**Dr G. Richard Stephenson (CHE)**  
Chemistry & Industry (organic chemistry)

**Dr Gregory Wildgoose (CHE)**  
Evening News (funding)

**Dr Clare Goodess (CRU)**  
Radio 4 Today Programme (climate change)

**Dr Declan Conway (DEV)**  
Online (climate change in China)

**Dr Tim Daw (DEV)**  
Voice of America (climate change)

**Dr Ben Jones (DEV)**  
Guardian online (book award)

**Prof Peter Newell (DEV)**  
Radio Norfolk, Sky News (Copenhagen)

**Martin Scott (DEV)**  
Online (User-generated content)

**Prof Neil Adger (ENV)**  
EDP, Evening News (climate change)

**Dr Victor Bense (ENV)**  
The Engineer (Arctic temperatures)

**Dr Stephen Dorling (ENV)**  
Daily Express, Telegraph online, EDP, Western Daily Press, Yorkshire Post, East Anglian Daily Times, Cool Earth (climate change)

**Prof Tim Lenton (ENV)**  
Science (Careers) New Scientist, Science Daily (tipping points), Prospect (geoengineering)

**Prof Peter Liss (ENV)**  
CNN (CRU hack)

**Prof Andy Watson (ENV)**  
The Times, Channel 4 News, Newsnight, (CRU hack), The Economist, BBC Online & various websites (Co2 absorption)

**Prof Bob Watson (ENV)**  
Channel 4 News, BBC Newsnight, BBC News at 10, Daily Politics, World Service (CRU hack)

**Roger Hewins (FTV)**  
Radio Norfolk (documentaries)

**Prof Tom Williamson (HIS)**  
Evening News (talk)

**Matt Dolan (LCIC)**  
Jewellery Today (sustainable jewellery), Pet Gazette (carbon pawprint), Hunting and Fishing Business (sustainable business)

**Prof Amit Chaudhuri (LIT)**  
The Guardian (Borders)

**Prof Giles Foden (LIT)**  
Daily Mirror (worst book of 2009)

**Prof Lavinia Greenlaw (LIT)**  
Evening News, EDP (Literary Festival)

**Prof Amanda Hopkinson (LIT)**  
Independent (book review), The Guardian (obituary for Charis Wilson)

**Dr Jeremy Noel-Tod (LIT)**  
Daily Telegraph (TS Eliot)

**Dr Andrew Hart (MED)**  
Online (Ulcerative Colitis)

**Dr Jerome Healy (NBS)**  
EDP (job losses)

**Dr John Collins (PHI)**  
Evening News (funding)

**Dr Nick Anstead (PSI)**  
Online (2010 election)

**Lawrence Hardy (PSI)**  
Radio Norfolk (Unitary Council)

**Dr Lee Marsden (PSI)**  
Radio Norfolk (new book), EDP (class)

**Prof Neil Ward (SSF)**  
EDP, Evening News, Radio Norfolk, online (PhD studentships)

**Dr Simon Hampton (SWP)**  
Radio Norfolk (X-Factor)

**Prof Gillian Schofield (SWP)**  
Evening News (youth crime)

**Prof Trevor Davies (VCO)**  
NBC, EDP (CRU hack)

**Prof Tom Ward (VCO)**  
Heart FM (CRU hack)

## Marathon challenge

A former PhD student has completed a half marathon in Cambodia to raise money for the Alzheimer's Research Trust after her mother was diagnosed with the condition.

Karen Cheung, who studied Creative and Critical Writing, ran the 21km Angkor Wat International Half Marathon last month.

She said: "After my mum was diagnosed I left Norwich and returned home to Hong Kong, to help my dad look after her. At first she could still cook and knit and dress herself but things gradually went downhill until she couldn't do anything for herself anymore and we couldn't cope.

"I became very depressed but my friends tried to help me by suggesting I take up exercise. I decided to focus on raising money for research into fighting Alzheimer's in the hope that one day a cure will be found."

Anyone wishing to sponsor Karen can do so by going to her JustGiving webpage at [www.justgiving.com/KarenAngkorWat](http://www.justgiving.com/KarenAngkorWat).

## New centre for SSF

A new Centre for Behavioural and Experimental and Social Science (CBESS) has been set up in SSF.

The centre includes scientists from schools across the university, including ECO, SWP, ENV, DEV and MED. They use experimental research methods, both in the lab and in the field, to find out how people make decisions in a variety of situations.

Centre director Prof Klaus Abbink (ECO) said: "Our aim is to gain an insight into what really matters in human behaviour. We are trying to find out what people do if you put them into different decision-making situations, problems or interactions.

"This type of research is important because it has implications for a variety of areas such as politics, business and international development, for example in relation to combating poverty or reducing corruption."

As well as producing working papers and other publications, CBESS is running a seminar series involving speakers from UEA and other universities. For more information visit [www.uea.ac.uk/ssf/cbess](http://www.uea.ac.uk/ssf/cbess)

## EDU study on Lenny Henry radio show

News of an EDU study of student disaffection with secondary mathematics has made its way to comedian Lenny Henry who referred to it on his BBC Radio 4 show.

The study was funded by the ESRC and conducted by Elena Nardi and Susan Steward.

## Emotion and cognition research needs volunteers

SWP and MED researchers studying emotion and cognition are looking at how people understand different social situations, such as giving a public speech, and situations related to physical settings, such as walking along a dark alley.

The study involves reading scenarios, which could be pleasant or slightly unpleasant, and answering simple questions about them, as well as filling in a short questionnaire about emotions and feelings.

Researchers are currently recruiting English native-speakers, aged 18 to 65, who are not

experiencing mental health issues. The study takes no more than an hour and can be carried out online at home.

Every participant will be entered into a prize draw with the chance to win £100 and receive a summary of findings on request.

The research has been reviewed and approved by the FOH Research Ethics Committee and is part of a broader programme funded by the Wellcome Trust.

To participate, or for further information, contact Gisela Perez-Olivas at [g.perez-olivas@uea.ac.uk](mailto:g.perez-olivas@uea.ac.uk) or call x3607.

## Public screening for FTV shorts

Students in FTV have produced four short documentaries looking at the historical, cultural and commercial importance of Magdalen Street as part of a new CUE East partnership.

CUE East and the Learning Shop have become partners in a new learning partnership called the Forum Learning Alliance (FLA).

The alliance has been created by the Forum Trust, which manages the Forum building in Norwich, and aims to publicise and provide a range of learning opportunities in the Forum.

A six-month FLA project entitled 'What Next?' was launched to give adults visiting Fusion, a multimedia space in the Forum, the chance to discuss issues prompted by its exhibitions.

As part of this initiative, FTV students produced a documentary project entitled 'Glimpses of Magdalen Street' which went on show to the public at Fusion in December.

The documentaries looked at the street as seen by different generations and local people were interviewed. They combined modern and archive footage, with each telling a different story.

The nine students involved also collected photos and individual memories of the street and, as part of the informal learning remit of the FLA project, students Sophie Benefer and Oliver Larkin helped CUE East provide further signposting to wider learning opportunities such as helping visitors find out about higher education and family history resources.

The FLA's work has been boosted by a £90,000 award from the DIUS Transformation Fund and the What Next? project is due to run until March.

For further information on this project or the potential use of Fusion contact Liane Ward, CUE East operations manager on x1553.

## North Sea conference

A major international conference drawing more than 60 speakers from Britain and Europe will examine the relationship between East Anglia and its North Sea World.

Throughout history East Anglia has had strong links with the lands and communities around the North Sea periphery. These links have had a profound influence on East Anglia's history and on the peoples and communities with which the region shares what is in some respects a common history.

The conference takes place from April 13-16 and its prime purpose is to explore the depth and diversity of these links across a broad chronological range encompassing the medieval and early modern periods, and to establish the impact of these links on the histories of East Anglia and its North Sea world.

Full details can be found at: [www.uea.ac.uk/ceas](http://www.uea.ac.uk/ceas)



Wolfmother



Fightstar



Your East

## Listings

### JAN

#### Fri 22

Photography Exhibition: **Your East**, SCVA, free (runs until Jan 28)

CCP Seminar: Bob Sugden (CCP) **What the market does for you (even if your preferences are incoherent)**, CCP Sem Rm, 1pm

Gig: **Wolfmother**, LCR, £17

#### Sat 23

**Saturday Art Club**, SCVA, 2-4pm, £4.50, booking essential

#### Mon 25

Music: **Sonic Arts 57**, Music Concert Rm, 7.30pm, £4-7

#### Tue 26

Inaugural lecture: Prof Jean Boase-Beier (LIT), **Translating Silence**, 6.15pm, EFB 01.02, free

Literary Festival: **Don Paterson**, LT1, 7pm, £6

#### Wed 27

AMS Seminar: Prof Douglas Tallack (Leicester Uni) **London sights in Alvin Langdon Coburn, Henry James and Joseph Pennell**, Rm A2.51, 4-5.30pm

Gig: **Manic Vision 2**, Waterfront, £6

Gig: **Kerrang! Relentless Energy Tour 2010**, LCR, £15

#### Thu 28

Language Lecture: **What have we done to deserve these translations? Almodovar's films in English**, Jorge Diaz-Cintas (Imperial College) LT3, 1pm

Music: **Allegri String Quartet**, Music Concert Rm, 7.30pm, £4-8

Gig: **Limehouse Lizzy**, Waterfront, £12.50

#### Fri 29

Music at One: **Janet Kwok** (Piano) & **Daniel Tam** (Oboe), Assembly Rooms,

Tickets for LCR and Waterfront gigs are available in Norwich from the Waterfront, UEA Box Office and Soundclash. For credit card bookings call 01603 508050. For full listings and online bookings go to: [www.ueaticketbookings.co.uk](http://www.ueaticketbookings.co.uk). All gig prices are advance only and may be subject to a booking fee. Doors open 7.30pm unless otherwise stated. All gigs are for over 14's only.

1pm, £4

## TV or not TV - this year's French play

Sacré Théâtre, the LCS staff-student drama company, will be performing Michel Vinaver's *L'Emission de Télévision* in February.

The production comes after the success of last year's *La Guerre de Troie n'aura pas lieu* which boasted the biggest Sacré Théâtre cast to date.

Written in 1988, *L'Emission de Télévision* retains contemporary relevance.

Blache and Delille were middle managers in the same paper factory in Orléans. Having both been made redundant, they are contacted by two young female journalists

Art for Lunch: **Oil, Murder, Brass: The Art of Benin**, Chris Jones, SCVA, 1.15 – 1.45pm, free

CCP Seminar: Oles Andriychuk (CCP), **Free speech/Free competition**, CCP Sem Rm, 1pm

#### Sat 30

Gig: **Pam's House 14th Birthday**, LCR, £11.50

### FEB

#### Mon 1

Film: **Desert Hearts**, 7.30 pm, LT1, free

#### Wed 3

AMS Seminar: Geoffrey Morgan (UEA), **Black American GIs in World War II Britain**, Rm A2.51, 4-5.30pm

Drama: **L'Emission de Télévision**, UEA Drama Studio, 7.30pm, £5 (runs until Feb 6)

Lecture: Prof Yvonne Tasker, **Out at the Movies? Sexualities in Hollywood Cinema**, 7pm, Elizabeth Fry Building, Rm 01.05

#### Thu 4

Language Lecture: **Working in Europe: How you get there and what happens when you do**, David Coyne (EC), LT3, 1pm

Translation Workshop: **Translating cover designs**, Hiroko Furukawa, Arts 0.03, 5pm

#### Fri 5

CCP Seminar: Oindrila De (CCP), **Firm number and asymmetry: Evidence from EC prosecuted cartel cases**, CCP Sem Rm, 1pm

#### Sun 7

Art Workshop: **Happy Chinese New Year** Artist-led workshops, SCVA, 12pm – 4pm, £3

#### Wed 10

AMS Seminar: Dr Daniel Williams (Swansea Uni), **Paul Robeson, Jazz and the Cold War** Rm A2.51, 4pm

Translation Workshop: **British sign language: Interpreting and theatre** Siobhan Rocks & Alex MacDonald, Arts 0.03, 5pm

Gig: **Story of the Year Waterfront**, £10

Gig: **Shockwaves NME Awards Tour 2010** LCR, £15

#### Thu 11

Lecture: Prof Steve Hindle **Work, Reward and Labour Discipline in Seventeenth-Century England** LT2 7pm

Exhibition Talk: SCVA, 1.15pm – 1.45pm, free

#### Fri 12

Music at One: **Matthew Martin** (trumpet) and **Andrew Weeks** (Percussion), Assembly Rooms, 1pm, £4

CREST European Forum Guest lecture: Sir Stephen Wall: **The European Union after the Lisbon Treaty** 5pm, Rm A3.01.

World Artist's Studio: **A day of talks from UEA faculty and invited guests** SCVA, 11am – 5pm, £25

#### Mon 15

Film: **Bad Education** 7.30 pm, LT1, free

#### Tue 16

Literary Festival: **Laila Lalami** LT1, 7pm, £6

Gig: **Fightstar** Waterfront, £12.50

#### Wed 17

ArtXtra: **Animation with David Lloyd**, SCVA 10.30am – 3pm, £15

Late Shift: **Open Art Events** SCVA, 6–9pm, free

Lecture: Dr BJ Epstein **We're Here, We're (Not?) Queer: How Non-Heterosexualities are Portrayed in Children's Literature** 7pm, Elizabeth Fry, Rm 01.05

#### Thu 18

Exhibition Talk: SCVA, 1.15 – 1.45pm, free

Lecture: Dr Fiona Williamson **Popular politics and seditious speech in early 17th century Norwich**, 7pm, LT2

Gig: **The Lost Levels**, Waterfront, £5

whose task it is to recruit possible participants in a reality TV show about unemployment for the over 50s.

But only one will be chosen to become a star for one night.

A few days before the programme, Blache is murdered, but by whom? A magistrate investigates but he is not the only one.

The production will be staged from February 3-6 in the Drama Studio with performances at 7.30pm. Tickets, priced at £5 or £3.50 for concessions, are available by emailing Jon Hyde at [j.hyde@uea.ac.uk](mailto:j.hyde@uea.ac.uk) or calling x2272.

## BOOKS

## Religion and conflict

Two new books co-edited by Lee Marsden (PSI) examine the issues of religion, media, conflict and military intervention.

International relations as a discipline has largely ignored the role of religion in shaping international events.

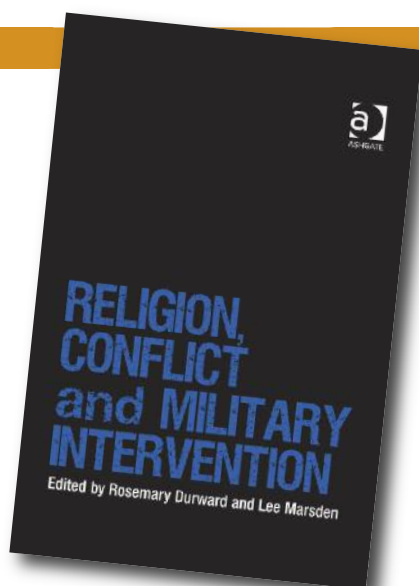
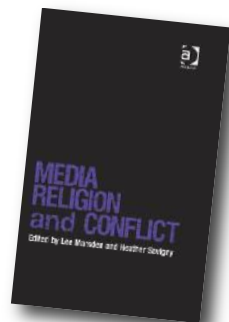
In *Media, Religion and Conflict* Lee and co-editor Heather Savigny (PSI) uniquely bring together some of the leading figures in the fields of politics and media, international relations and security, and international relations and religion.

The volume offers a series of case studies reflecting on how the media covers religion as conflict within and between states. It

challenges readers to examine critically how media reportage and commentary influences perceptions and responses to religion and security.

For many years religion has been the neglected component of international relations and yet in an

age of globalization and terrorism, religious identity has become increasingly important in the lives of people in the West as well as the



developing world.

*Religion, Conflict and Military Intervention*, co-edited by Rosemary Durward, brings an exciting new perspective with fresh ideas and analyses of the events shaping conflict and conflict resolution today.

The book combines chapters highlighting Christian and Islamist theological approaches to understanding and interpreting conflict, as well as case studies on the role of religion in US foreign policy and the Iraq war, with religious perspectives on building peace once conflicts are resolved.

The volume provides an ideal starting point for anyone wishing to gain a deeper understanding of the religious character of conflict in the 21st century and how such conflict could be resolved.

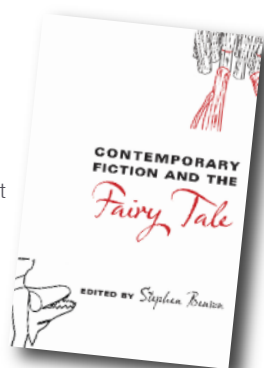
Both books, priced £55, are published by Ashgate.

## Contemporary Fiction award for Benson's fairy tale essays

*Contemporary Fiction and the Fairy Tale*, a collection of essays edited and introduced by Dr Stephen Benson (LIT), has been chosen as an Outstanding Academic Title for 2009.

The list of books is published this month in *Choice*, the journal of the academic wing of the American Library Association. This is in fact the second book by Dr Benson to have

been selected for the annual award, the first having been *Cycles of Influence* in 2003.



## Climate text is book of the year

Prof Mike Hulme's *Why We Disagree About Climate Change* (ENV) has been selected as one of *The Economist's* books of the year 2009. It was selected as one of just four in the Science and Technology category.

Judges said: "How global warming has been transformed from a physical

phenomenon that is measurable and observable by scientists into a social, cultural and political one, by a professor of climate change at the University of East Anglia.

"In the crowded and noisy world of climate-change publications, this book will stand out."

## LGBT History Month

The university will be celebrating LGBT History Month in February with a range of free events on campus.

Public lectures and film screenings have been organised by the UEA Staff Pride and the student UEA Pride groups.

On February 3, Prof Yvonne Tasker (FTV) will present a lecture entitled 'Out at the Movies? Sexualities in Hollywood Cinema' at 7pm in the Elizabeth Fry Building, room 01.05.

On February 17 Dr BJ Epstein's (LIT) lecture 'We're Here, We're (Not?) Queer' will look at how non-heterosexualities are portrayed in children's literature at 7pm in the Elizabeth Fry Building, room 01.05.

On February 22, author Richard Beard, who studied Creative Writing at the university in 1994, will offer an informal session with Drusilla Marland, based on his account of Dru's gender transition. They will talk about Richard's book 'Becoming Drusilla: One Life, Two Friends, Three Genders' at 7pm in the Drama Studio.

On February 23, Ms Claudina Richards and Dr Brigitte Clark (LAW) will give a lecture entitled 'A channel apart? Same-sex couples in English and French law' at 7pm in the Elizabeth Fry Building, room 01.05.

Free film screenings include *Desert Hearts* on February 1 and *Bad Education* on February 15. Both take place at 7.30pm in LT1.

To find out more about any of these events contact Jude Smith on x3849.

UEA Staff Pride and the student UEA Pride are also celebrating a recent university decision to join Stonewall, the key UK pressure group for LGB rights. The university already has close links with the Gender Trust, an organisation lobbying for the transgender community.

To find out more about UEA Staff Pride, visit [www.uea.ac.uk/equality](http://www.uea.ac.uk/equality) or email [equality@uea.ac.uk](mailto:equality@uea.ac.uk). For further Norwich Pride events see [www.norwichpride.org.uk](http://www.norwichpride.org.uk).

## Teaching Fellowships

A total of 10 Teaching Fellowships have been awarded for 2009-2010, out of 26 applications.

Prof Tom Ward, pro-vice-chancellor (academic) and chair of the Teaching Fellowships panel, said: "The panel was impressed by the number, standard and variety of applications received. Members had a difficult task in selecting the fellows and having only a limited amount of funds at their disposal were sorry that some applicants had to be disappointed."

For a list of the Teaching Fellows and their projects see: <https://intranet.uea.ac.uk/ltqo/teachingrecognition/List+of+Successful+TF+A+applicants>



## New series of inaugural lectures

A new series of inaugural lectures will be starting this month with each event representing a different faculty.

The purpose of the lectures is to "announce" the arrival of the university's new professors and offer the chance for colleagues and the public to gain an insight into their research interests.

Head of LIT, Prof Jean Boase-Beier (pictured) will be kicking off the series on Tuesday, January 26, with her lecture entitled 'Translating Silence'. She will be covering the role of silence in communication and asking; if translation is about recreating words in another language, how can we recreate what has not been uttered?

Prof Peter Lloyd-Sherlock (DEV) will be looking at global population ageing and its consequences on February 23.

On March 23, Prof Lee Shepstone (MED) will be giving an insight into the trials and tribulations of a medical statistician covering both past and future issues.

All lectures will start at 6.15pm in Elizabeth Fry Building lecture theatre 01.02 and will be followed by a drinks reception, in which the speakers will be happy to discuss their lecture.

Admission is free and everyone is welcome. For more information, please call x2130 or email [events@uea.ac.uk](mailto:events@uea.ac.uk).

## Learning and Teaching 2010

The university's fourth Learning and Teaching Day will be held on April 16.

Pro-vice-chancellor (academic) Prof Tom Ward said: "All staff with an interest in teaching students are warmly invited to attend our Learning and Teaching Day.

"It is a wonderful opportunity to hear about and share experiences. We also have a distinguished guest – this time Prof Phil Race."

It is hoped that the event will be held in the new Thomas Paine Study Centre. Watch out for further publicity.



## Photographs of Norfolk and Japan

Two fascinating photographic projects by Norfolk-based photographers Andy Crouch and Andi Sapey are on display in the Sainsbury Centre Link until January 28.

Whilst taken in locations geographically far apart, these quirky and vibrant colour photographs, sit remarkably well together.

The connection is the artists' similarity in approach and style. Both are led by their passion for colour and let their sense of humour come through in their work. They also have an ability to capture alternative views of



every day life, often capturing scenes which may soon disappear.

The Sainsbury Centre is open from Tuesday to Sunday, 10am to 5pm, and until 8pm on Mondays.

Admission to this exhibition is free. To find out more visit [www.scva.ac.uk](http://www.scva.ac.uk) or call 01603 593199.

## Two new Sainsbury Centre exhibitions

Two new exhibitions will be launching at the Sainsbury Centre next month - The Anderson Collection of Art Nouveau and The Artist's Studio.



Elizabeth Brown, *Female Figure Lying on a Bed*, 1931  
University College London

The Anderson Collection of Art Nouveau comprises jewellery, furniture, glassware and metalwork, which was given to the university in 1978 by Sir Colin and Lady Anderson.

Pieces by leading Art Nouveau exponents will be on display including Emile Gallé, René Lalique, Louis Comfort Tiffany, Minton and Royal Doulton, as well as a newly donated dragonfly brooch.

The collection is exhibited every three years and runs concurrently with The Artist's Studio - an exhibition exploring the ways artists have represented their workplaces

since the mid-17th century.

The touring exhibition features paintings by artists including Paul Cézanne, Mark Gertler and Gwen John, and photographs by Bruce Bernard, Gautier Deblonde and Perry Ogden.

Beginning in 1640, it gives an insight into the studio as a site for artistic creation and as a subject that has been long explored by artists.

Both exhibitions open February 9 and run until May 23. Combined admission is £4 (£2 concs) or £8 for a family.

[www.scva.ac.uk](http://www.scva.ac.uk).