



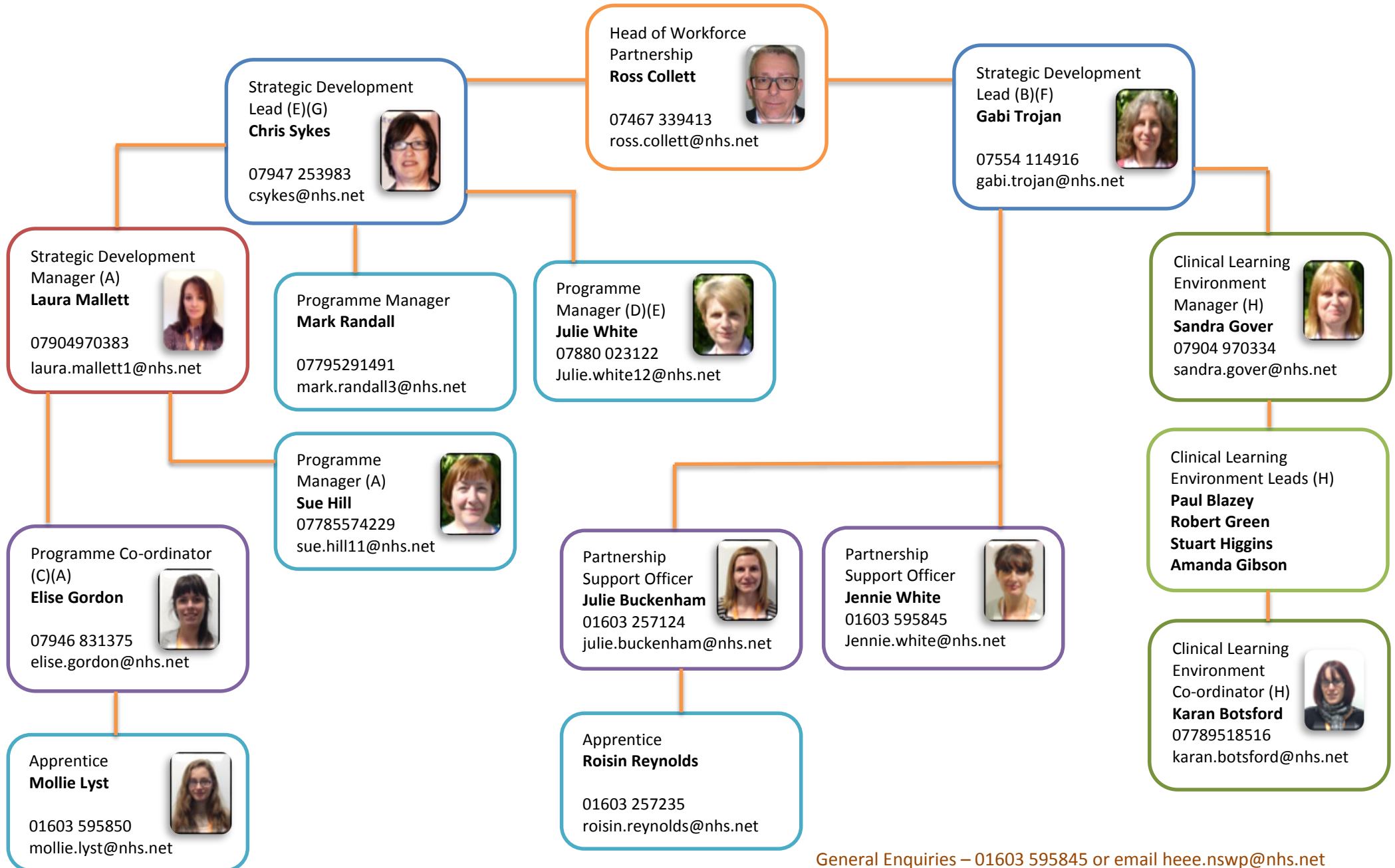


## Norfolk and Suffolk Workforce Partnership – Key Contacts

	Norfolk and Suffolk				CLE Co-ordinator Norfolk
<b>Clinical Learning Environment Leads</b>	<p>Amanda Gibson <b>07534 253132</b> amanda.gibson7@nhs.net</p>	<p>Rob Green <b>07904 970352</b> robert.green3@nhs.net</p> 	<p>Paul Blazey <b>07880 023134</b> paul.blazey@nhs.net</p> 	<p>Stuart Higgins <b>07825 923693</b> stuart.higgins@nhs.net</p> 	<p>Karan Botsford <b>07789 518516</b> karan.botsford@nhs.net</p> 
<b>Organisation</b>	<ul style="list-style-type: none"> <li>Ipswich Hospital</li> <li>AHP Suffolk</li> <li>Suffolk Primary Care</li> <li>Suffolk Private, Voluntary and Independent Sector</li> </ul>	<ul style="list-style-type: none"> <li>Queen Elizabeth Hospital</li> <li>Norfolk and Norwich University Hospital</li> <li>West Suffolk Hospital</li> <li>Cambridge Community Services</li> </ul>	<ul style="list-style-type: none"> <li>Norfolk and Suffolk Foundation Trust</li> <li>James Paget University Hospital</li> </ul>	<ul style="list-style-type: none"> <li>Norfolk Community Health &amp; Care</li> <li>East Coast Community Health</li> <li>Suffolk County Council</li> <li>Suffolk Community Health</li> </ul>	<ul style="list-style-type: none"> <li>Norfolk Primary Care</li> <li>Norfolk Private, Voluntary and Independent Sector</li> </ul>
<b>Programme Links</b>	<p>Midwifery (UCS) Radiography Radiotherapy Child Nursing (UCS) Adult Nursing (UCS) Operating Department Practitioner (UCS)</p>	<p>Allied Health Professionals Paramedic (UEA) Midwifery (UEA) Return to Practice</p>	<p>Mental Health Nursing (UCS &amp; UEA) Operating Department Practitioner (UEA) Clinical Psychology Pharmacy Paramedic (UCS)</p>	<p>Adult Nursing (UEA) Learning Disabilities Nursing (UEA) Mentor Preparation Programme (UCS &amp; UEA) Health Visiting</p>	



General Enquiries – 01603 595845 or email [heee.nswp@nhs.net](mailto:heee.nswp@nhs.net)